

CBLN2 Antibody (C-term)
Affinity Purified Rabbit Polyclonal Antibody (Pab)
Catalog # AP11835b

Specification

CBLN2 Antibody (C-term) - Product Information

Application	WB, IHC-P,E
Primary Accession	Q8IUK8
Other Accession	P98087 , Q8BGU2 , NP_872317.1
Reactivity	Human, Mouse
Predicted	Rat
Host	Rabbit
Clonality	Polyclonal
Isotype	Rabbit IgG
Antigen Region	179-207

CBLN2 Antibody (C-term) - Additional Information

Gene ID 147381

Other Names

Cerebellin-2, CBLN2

Target/Specificity

This CBLN2 antibody is generated from rabbits immunized with a KLH conjugated synthetic peptide between 179-207 amino acids from the C-terminal region of human CBLN2.

Dilution

WB~~1:1000

IHC-P~~1:10~50

E~~Use at an assay dependent concentration.

Format

Purified polyclonal antibody supplied in PBS with 0.09% (W/V) sodium azide. This antibody is purified through a protein A column, followed by peptide affinity purification.

Storage

Maintain refrigerated at 2-8°C for up to 2 weeks. For long term storage store at -20°C in small aliquots to prevent freeze-thaw cycles.

Precautions

CBLN2 Antibody (C-term) is for research use only and not for use in diagnostic or therapeutic procedures.

CBLN2 Antibody (C-term) - Protein Information

Name CBLN2 ([HGNC:1544](#))

Function Acts as a synaptic organizer in specific subsets of neurons in the brain. Essential for long-term maintenance but not establishment of excitatory synapses. Functions as part of a trans-synaptic complex by binding to postsynaptic GRID1 and presynaptic neuexins. This interaction helps regulate the activity of NMDA and AMPA receptors at hippocampal synapses without affecting synapse formation. NRXN1B-CBLN2- GRID1 complex transduce presynaptic signals into postsynaptic NMDAR response. NRXN3B-CBLN2-GRID1 complex transduce presynaptic signals into postsynaptic AMPAR response.

Cellular Location

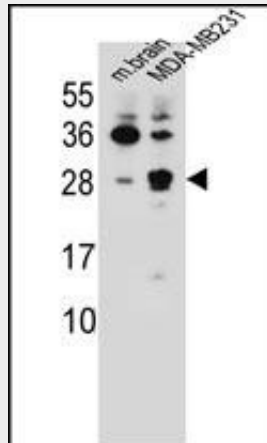
Secreted {ECO:0000250|UniProtKB:Q8BGU2}.

CBLN2 Antibody (C-term) - Protocols

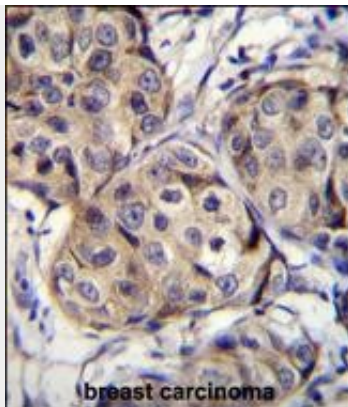
Provided below are standard protocols that you may find useful for product applications.

- [Western Blot](#)
- [Blocking Peptides](#)
- [Dot Blot](#)
- [Immunohistochemistry](#)
- [Immunofluorescence](#)
- [Immunoprecipitation](#)
- [Flow Cytometry](#)
- [Cell Culture](#)

CBLN2 Antibody (C-term) - Images



CBLN2 Antibody (C-term) (Cat. #AP11835b) western blot analysis in mouse brain tissue and MDA-MB231 cell line lysates (35ug/lane). This demonstrates the CBLN2 antibody detected the CBLN2 protein (arrow).



CBLN2 Antibody (C-term) (Cat. #AP11835b) immunohistochemistry analysis in formalin fixed and paraffin embedded human breast carcinoma followed by peroxidase conjugation of the secondary antibody and DAB staining. This data demonstrates the use of CBLN2 Antibody (C-term) for immunohistochemistry. Clinical relevance has not been evaluated.

CBLN2 Antibody (C-term) - Background

CBLN2, Cerebellin 2, is a secreted glycoprotein and, like Cerebellin 1, may also serve as transneuronal regulators of synaptic functions in various brain regions.

CBLN2 Antibody (C-term) - References

- Grant, S.F., et al. J. Pediatr. 155(6):909-913(2009)
- Baranzini, S.E., et al. Hum. Mol. Genet. 18(4):767-778(2009)
- Clark, H.F., et al. Genome Res. 13(10):2265-2270(2003)
- Kavety, B., et al. Brain Res. Mol. Brain Res. 27(1):152-156(1994)