

**KCNRG Antibody (C-term)**  
**Affinity Purified Rabbit Polyclonal Antibody (Pab)**  
**Catalog # AP11851b****Specification**

---

**KCNRG Antibody (C-term) - Product Information**

Application	WB, IHC-P,E
Primary Accession	<a href="#">Q8N5I3</a>
Other Accession	<a href="#">NP_005789.2</a> , <a href="#">NP_001007279.1</a> , <a href="#">NP_775876.1</a>
Reactivity	Mouse
Host	Rabbit
Clonality	Polyclonal
Isotype	Rabbit IgG
Calculated MW	31048
Antigen Region	175-202

**KCNRG Antibody (C-term) - Additional Information****Gene ID** 283518**Other Names**

Potassium channel regulatory protein, Potassium channel regulator, Protein CLLD4, KCNRG, CLLD4

**Target/Specificity**

This KCNRG antibody is generated from rabbits immunized with a KLH conjugated synthetic peptide between 175-202 amino acids from the C-terminal region of human KCNRG.

**Dilution**WB~~1:1000  
IHC-P~~1:10~50**Format**

Purified polyclonal antibody supplied in PBS with 0.09% (W/V) sodium azide. This antibody is purified through a protein A column, followed by peptide affinity purification.

**Storage**

Maintain refrigerated at 2-8°C for up to 2 weeks. For long term storage store at -20°C in small aliquots to prevent freeze-thaw cycles.

**Precautions**

KCNRG Antibody (C-term) is for research use only and not for use in diagnostic or therapeutic procedures.

**KCNRG Antibody (C-term) - Protein Information****Name** KCNRG**Synonyms** CLLD4

**Function** Inhibits potassium fluxes in cells. May regulate Kv1 family channel proteins by retaining a fraction of channels in endomembranes.

**Cellular Location**

Endoplasmic reticulum

**Tissue Location**

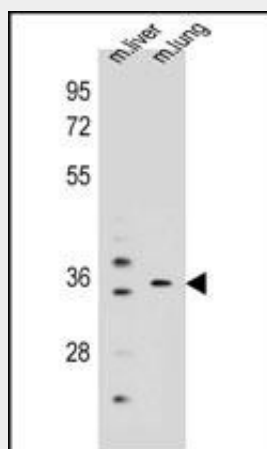
Ubiquitous in normal tissues and expressed in some tumor tissues.

**KCNRG Antibody (C-term) - Protocols**

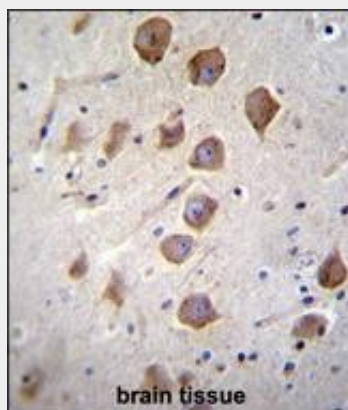
Provided below are standard protocols that you may find useful for product applications.

- [Western Blot](#)
- [Blocking Peptides](#)
- [Dot Blot](#)
- [Immunohistochemistry](#)
- [Immunofluorescence](#)
- [Immunoprecipitation](#)
- [Flow Cytometry](#)
- [Cell Culture](#)

**KCNRG Antibody (C-term) - Images**



KCNRG Antibody (C-term) (Cat. #AP11851b) western blot analysis in mouse liver,lung tissue lysates (35ug/lane).This demonstrates the KCNRG antibody detected the KCNRG protein (arrow).



KCNRG Antibody (C-term) (Cat. #AP11851b) immunohistochemistry analysis in formalin fixed and paraffin embedded human brain tissue followed by peroxidase conjugation of the secondary antibody and DAB staining. This data demonstrates the use of KCNRG Antibody (C-term) for immunohistochemistry. Clinical relevance has not been evaluated.

#### **KCNRG Antibody (C-term) - Background**

This gene encodes a member of the tripartite motif (TRIM) family. The TRIM motif includes three zinc-binding domains, a RING, a B-box type 1 and a B-box type 2, and a coiled-coil region. This gene is located on chromosome 13 within the minimal deletion region for B-cell chronic lymphocytic leukemia. Multiple alternatively spliced transcript variants have been found for this gene.

#### **KCNRG Antibody (C-term) - References**

Lerner, M., et al. Mol. Biol. Cell 18(5):1670-1682(2007)  
Skoblov, M., et al. Biochem. Biophys. Res. Commun. 342(3):859-866(2006)  
Corcoran, M.M., et al. Genes Chromosomes Cancer 40(4):285-297(2004)  
Dunham, A., et al. Nature 428(6982):522-528(2004)  
van Everdink, W.J., et al. Cancer Genet. Cytogenet. 146(1):48-57(2003)