

GAS1 Antibody (N-term)
Purified Rabbit Polyclonal Antibody (Pab)
Catalog # AP11869a**Specification**

GAS1 Antibody (N-term) - Product Information

Application	FC, IF, IHC-P, WB,E
Primary Accession	P54826
Other Accession	Q01721 , NP_002039
Reactivity	Human, Mouse
Host	Rabbit
Clonality	Polyclonal
Isotype	Rabbit IgG
Antigen Region	95-127

GAS1 Antibody (N-term) - Additional Information**Gene ID** 2619**Other Names**

Growth arrest-specific protein 1, GAS-1, GAS1

Target/Specificity

This GAS1 antibody is generated from rabbits immunized with a KLH conjugated synthetic peptide between 95-127 amino acids from the N-terminal region of human GAS1.

Dilution

FC~~1:10~50

IF~~1:10~50

IHC-P~~1:50~100

WB~~1:1000

E~~Use at an assay dependent concentration.

Format

Purified polyclonal antibody supplied in PBS with 0.09% (W/V) sodium azide. This antibody is prepared by Saturated Ammonium Sulfate (SAS) precipitation followed by dialysis against PBS.

Storage

Maintain refrigerated at 2-8°C for up to 2 weeks. For long term storage store at -20°C in small aliquots to prevent freeze-thaw cycles.

Precautions

GAS1 Antibody (N-term) is for research use only and not for use in diagnostic or therapeutic procedures.

GAS1 Antibody (N-term) - Protein Information**Name** GAS1

Function Specific growth arrest protein involved in growth suppression. Blocks entry to S phase. Prevents cycling of normal and transformed cells. Binds 20(S)-hydroxycholesterol (20(S)-OHC) (By similarity).

Cellular Location

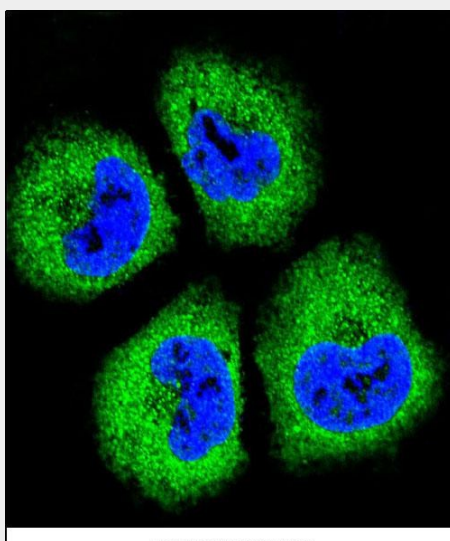
Cell membrane; Lipid-anchor, GPI- anchor

GAS1 Antibody (N-term) - Protocols

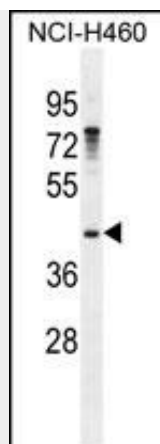
Provided below are standard protocols that you may find useful for product applications.

- [Western Blot](#)
- [Blocking Peptides](#)
- [Dot Blot](#)
- [Immunohistochemistry](#)
- [Immunofluorescence](#)
- [Immunoprecipitation](#)
- [Flow Cytometry](#)
- [Cell Culture](#)

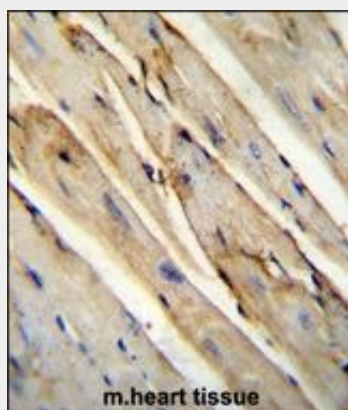
GAS1 Antibody (N-term) - Images



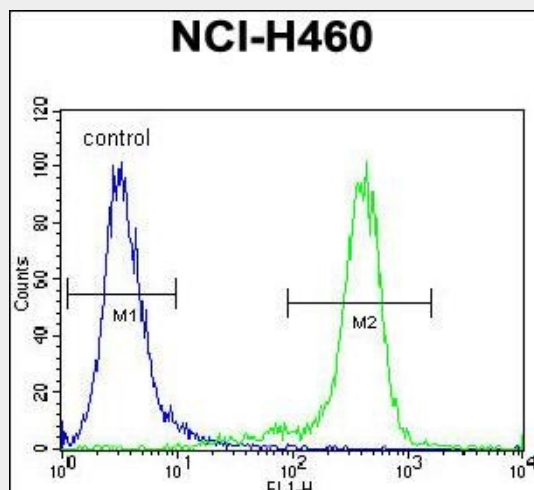
Confocal immunofluorescent analysis of GAS1 Antibody (N-term) (Cat. #AP11869a) with NCI-H460 cell followed by Alexa Fluor® 488-conjugated goat anti-rabbit IgG (green). DAPI was used to stain the cell nuclear (blue).



GAS1 Antibody (N-term) (Cat. #AP11869a) western blot analysis in NCI-H460 cell line lysates (35ug/lane). This demonstrates the GAS1 antibody detected the GAS1 protein (arrow).



GAS1 Antibody (N-term) (Cat. #AP11869a) immunohistochemistry analysis in formalin fixed and paraffin embedded mouse heart tissue followed by peroxidase conjugation of the secondary antibody and DAB staining. This data demonstrates the use of GAS1 Antibody (N-term) for immunohistochemistry. Clinical relevance has not been evaluated.



GAS1 Antibody (N-term) (Cat. #AP11869a) flow cytometric analysis of NCI-H460 cells (right histogram) compared to a negative control cell (left histogram). FITC-conjugated goat-anti-rabbit secondary antibodies were used for the analysis.

GAS1 Antibody (N-term) - Background

Growth arrest-specific 1 plays a role in growth suppression. GAS1 blocks entry to S phase and prevents cycling of normal and transformed cells. Gas1 is a putative tumor suppressor gene.

GAS1 Antibody (N-term) - References

Ribeiro, L.A., et al. Am. J. Med. Genet. A 152A (7), 1688-1694 (2010) : Johnatty, S.E., et al. PLoS Genet. 6 (7), E1001016 (2010) : Rittie, L., et al. Aging Cell 8(6):738-751(2009) Zhao, L., et al. J. Biol. Chem. 284(39):26273-26285(2009) Dominguez-Monzon, G., et al. Int. J. Dev. Neurosci. 27(4):305-313(2009)

GAS1 Antibody (N-term) - Citations

- [Gas1 Inhibits Metastatic and Metabolic Phenotypes in Colorectal Carcinoma.](#)