

GPM6B Antibody (N-term)
Affinity Purified Rabbit Polyclonal Antibody (Pab)
Catalog # AP11878a**Specification**

GPM6B Antibody (N-term) - Product Information

Application	WB, FC,E
Primary Accession	O13491
Other Accession	O9JJK1 , NP_005269
Reactivity	Human
Predicted	Rat
Host	Rabbit
Clonality	Polyclonal
Isotype	Rabbit IgG
Calculated MW	28989
Antigen Region	1-30

GPM6B Antibody (N-term) - Additional Information**Gene ID** 2824**Other Names**

Neuronal membrane glycoprotein M6-b, M6b, GPM6B, M6B

Target/Specificity

This GPM6B antibody is generated from rabbits immunized with a KLH conjugated synthetic peptide between 1-30 amino acids from the N-terminal region of human GPM6B.

Dilution

WB~~1:1000

FC~~1:10~50

Format

Purified polyclonal antibody supplied in PBS with 0.09% (W/V) sodium azide. This antibody is purified through a protein A column, followed by peptide affinity purification.

Storage

Maintain refrigerated at 2-8°C for up to 2 weeks. For long term storage store at -20°C in small aliquots to prevent freeze-thaw cycles.

Precautions

GPM6B Antibody (N-term) is for research use only and not for use in diagnostic or therapeutic procedures.

GPM6B Antibody (N-term) - Protein Information**Name** GPM6B

Synonyms M6B

Function May be involved in neural development. Involved in regulation of osteoblast function and bone formation. Involved in matrix vesicle release by osteoblasts; this function seems to involve maintenance of the actin cytoskeleton. May be involved in cellular trafficking of SERT and thereby in regulation of serotonin uptake.

Cellular Location

Cell membrane; Multi-pass membrane protein. Note=Colocalizes with SERT at the plasma membrane.

Tissue Location

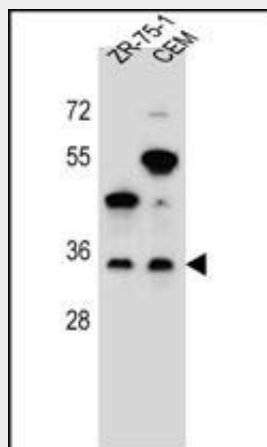
Neurons and glia; cerebellar Bergmann glia, in glia within white matter tracts of the cerebellum and cerebrum, and in embryonic dorsal root ganglia

GPM6B Antibody (N-term) - Protocols

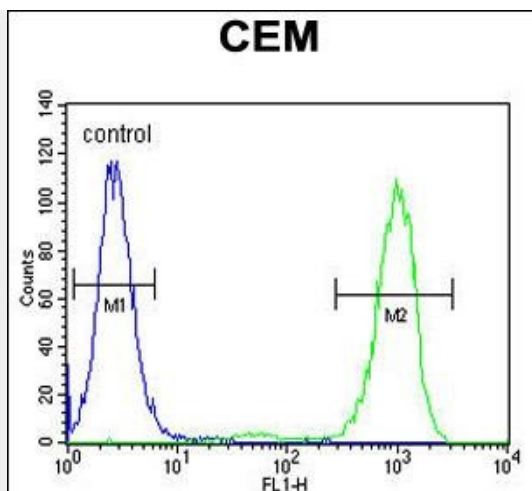
Provided below are standard protocols that you may find useful for product applications.

- [Western Blot](#)
- [Blocking Peptides](#)
- [Dot Blot](#)
- [Immunohistochemistry](#)
- [Immunofluorescence](#)
- [Immunoprecipitation](#)
- [Flow Cytometry](#)
- [Cell Culture](#)

GPM6B Antibody (N-term) - Images



GPM6B Antibody (N-term) (Cat. #AP11878a) western blot analysis in ZR-75-1,CEM cell line lysates (35ug/lane).This demonstrates the GPM6B antibody detected the GPM6B protein (arrow).



GPM6B Antibody (N-term) (Cat. #AP11878a) flow cytometric analysis of CEM cells (right histogram) compared to a negative control cell (left histogram). FITC-conjugated goat-anti-rabbit secondary antibodies were used for the analysis.

GPM6B Antibody (N-term) - Background

This gene encodes a membrane glycoprotein that belongs to the proteolipid protein family. Proteolipid protein family members are expressed in most brain regions and are thought to be involved in cellular housekeeping functions, such as membrane trafficking and cell-to-cell communication.

GPM6B Antibody (N-term) - References

Fjorback, A.W., et al. J. Mol. Neurosci. 37(3):191-200(2009)
Sebastiani, P., et al. Am. J. Hematol. 83(3):189-195(2008)
Combes, P., et al. Neurogenetics 7(1):31-37(2006)
Henneke, M., et al. Am. J. Med. Genet. A 128A (2), 156-158 (2004) :
Werner, H., et al. Mol. Cell. Neurosci. 18(6):593-605(2001)