

RNF215 Antibody (C-term)
Affinity Purified Rabbit Polyclonal Antibody (Pab)
Catalog # AP11895b**Specification**

RNF215 Antibody (C-term) - Product Information

Application	WB, IHC-P,E
Primary Accession	Q9Y6U7
Other Accession	NP_001017981.1
Reactivity	Human, Mouse
Host	Rabbit
Clonality	Polyclonal
Isotype	Rabbit IgG
Calculated MW	41101
Antigen Region	266-295

RNF215 Antibody (C-term) - Additional Information**Gene ID** 200312**Other Names**

RING finger protein 215, RNF215

Target/Specificity

This RNF215 antibody is generated from rabbits immunized with a KLH conjugated synthetic peptide between 266-295 amino acids from the C-terminal region of human RNF215.

Dilution

WB~~1:1000

IHC-P~~1:10~50

Format

Purified polyclonal antibody supplied in PBS with 0.09% (W/V) sodium azide. This antibody is purified through a protein A column, followed by peptide affinity purification.

Storage

Maintain refrigerated at 2-8°C for up to 2 weeks. For long term storage store at -20°C in small aliquots to prevent freeze-thaw cycles.

Precautions

RNF215 Antibody (C-term) is for research use only and not for use in diagnostic or therapeutic procedures.

RNF215 Antibody (C-term) - Protein Information**Name** RNF215**Cellular Location**

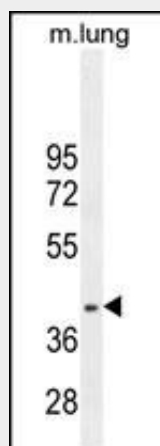
Membrane; Multi-pass membrane protein

RNF215 Antibody (C-term) - Protocols

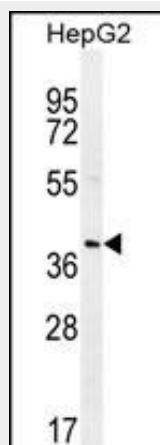
Provided below are standard protocols that you may find useful for product applications.

- [Western Blot](#)
- [Blocking Peptides](#)
- [Dot Blot](#)
- [Immunohistochemistry](#)
- [Immunofluorescence](#)
- [Immunoprecipitation](#)
- [Flow Cytometry](#)
- [Cell Culture](#)

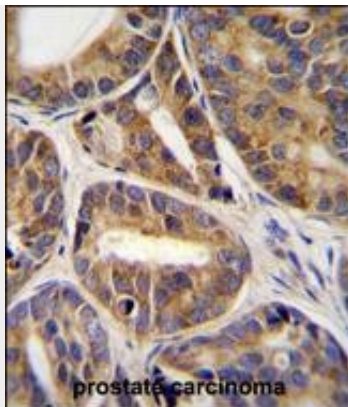
RNF215 Antibody (C-term) - Images



RNF215 Antibody (C-term) (Cat. #AP11895b) western blot analysis in mouse lung tissue lysates (35ug/lane). This demonstrates the RNF215 antibody detected the RNF215 protein (arrow).



RNF215 Antibody (C-term) (Cat. #AP11895b) western blot analysis in HepG2 cell line lysates (35ug/lane). This demonstrates the RNF215 antibody detected the RNF215 protein (arrow).



RNF215 Antibody (C-term) (Cat. #AP11895b) immunohistochemistry analysis in formalin fixed and paraffin embedded human prostate carcinoma tissue followed by peroxidase conjugation of the secondary antibody and DAB staining. This data demonstrates the use of RNF215 Antibody (C-term) for immunohistochemistry. Clinical relevance has not been evaluated.

RNF215 Antibody (C-term) - Background

The function of this protein remains unknown.

RNF215 Antibody (C-term) - References

.Genome Res. 8(11):1097-1108(1998)