

**LRRC63 Antibody (C-term)**  
**Affinity Purified Rabbit Polyclonal Antibody (Pab)**  
**Catalog # AP11896b****Specification**

---

**LRRC63 Antibody (C-term) - Product Information**

Application	WB, FC,E
Primary Accession	<a href="#">Q05C16</a>
Reactivity	Human
Host	Rabbit
Clonality	Polyclonal
Isotype	Rabbit IgG
Calculated MW	67163
Antigen Region	484-513

**LRRC63 Antibody (C-term) - Additional Information****Gene ID** 220416**Other Names**

Leucine-rich repeat-containing protein 63, LRRC63

**Target/Specificity**

This LRRC63 antibody is generated from rabbits immunized with a KLH conjugated synthetic peptide between 484-513 amino acids from the C-terminal region of human LRRC63.

**Dilution**

WB~~1:1000

FC~~1:10~50

**Format**

Purified polyclonal antibody supplied in PBS with 0.09% (W/V) sodium azide. This antibody is purified through a protein A column, followed by peptide affinity purification.

**Storage**

Maintain refrigerated at 2-8°C for up to 2 weeks. For long term storage store at -20°C in small aliquots to prevent freeze-thaw cycles.

**Precautions**

LRRC63 Antibody (C-term) is for research use only and not for use in diagnostic or therapeutic procedures.

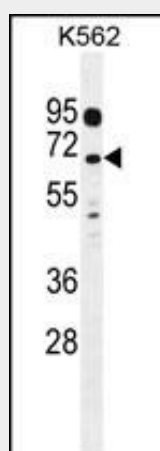
**LRRC63 Antibody (C-term) - Protein Information****Name** LRRC63

## LRRC63 Antibody (C-term) - Protocols

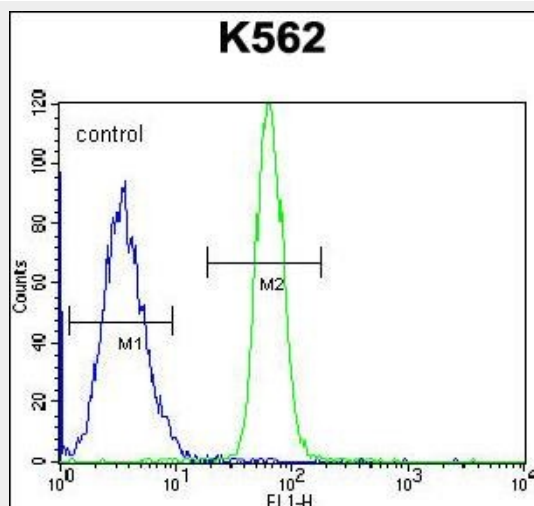
Provided below are standard protocols that you may find useful for product applications.

- [Western Blot](#)
- [Blocking Peptides](#)
- [Dot Blot](#)
- [Immunohistochemistry](#)
- [Immunofluorescence](#)
- [Immunoprecipitation](#)
- [Flow Cytometry](#)
- [Cell Culture](#)

## LRRC63 Antibody (C-term) - Images



LRRC63 Antibody (C-term) (Cat. #AP11896b) western blot analysis in K562 cell line lysates (35ug/lane). This demonstrates the LRRC63 antibody detected the LRRC63 protein (arrow).



LRRC63 Antibody (C-term) (Cat. #AP11896b) flow cytometric analysis of K562 cells (right histogram) compared to a negative control cell (left histogram). FITC-conjugated goat-anti-rabbit secondary antibodies were used for the analysis.

## LRRC63 Antibody (C-term) - Background

The function of this protein remains unknown.