

CCNI2 Antibody (Center)
Affinity Purified Rabbit Polyclonal Antibody (Pab)
Catalog # AP11897c**Specification**

CCNI2 Antibody (Center) - Product Information

Application	IF, IHC-P, WB,E
Primary Accession	Q6ZMN8
Other Accession	NP_001034869.1
Reactivity	Human
Host	Rabbit
Clonality	Polyclonal
Isotype	Rabbit IgG
Calculated MW	40622
Antigen Region	92-121

CCNI2 Antibody (Center) - Additional Information**Gene ID** 645121**Other Names**

Cyclin-I2, CCNI2

Target/Specificity

This CCNI2 antibody is generated from rabbits immunized with a KLH conjugated synthetic peptide between 92-121 amino acids from the Central region of human CCNI2.

Dilution

IF~~1:10~50

IHC-P~~1:10~50

WB~~1:1000

E~~Use at an assay dependent concentration.

Format

Purified polyclonal antibody supplied in PBS with 0.09% (W/V) sodium azide. This antibody is purified through a protein A column, followed by peptide affinity purification.

Storage

Maintain refrigerated at 2-8°C for up to 2 weeks. For long term storage store at -20°C in small aliquots to prevent freeze-thaw cycles.

Precautions

CCNI2 Antibody (Center) is for research use only and not for use in diagnostic or therapeutic procedures.

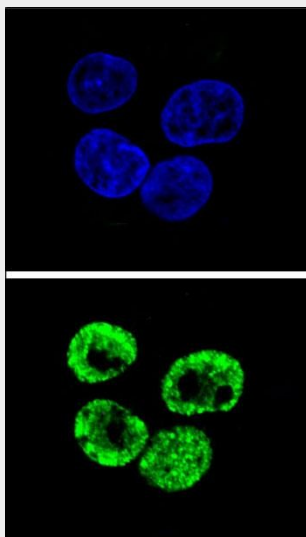
CCNI2 Antibody (Center) - Protein Information**Name** CCNI2

CCNI2 Antibody (Center) - Protocols

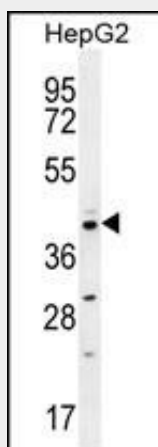
Provided below are standard protocols that you may find useful for product applications.

- [Western Blot](#)
- [Blocking Peptides](#)
- [Dot Blot](#)
- [Immunohistochemistry](#)
- [Immunofluorescence](#)
- [Immunoprecipitation](#)
- [Flow Cytometry](#)
- [Cell Culture](#)

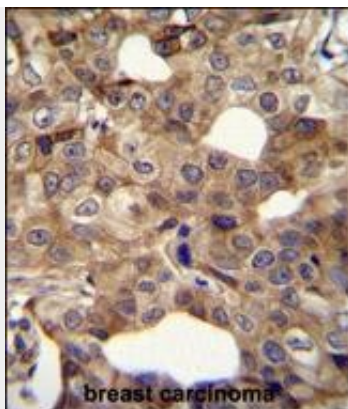
CCNI2 Antibody (Center) - Images



Confocal immunofluorescent analysis of CCNI2 Antibody (Center)(Cat#AP11897c) with HepG2 cell followed by Alexa Fluor 488-conjugated goat anti-rabbit IgG (green). DAPI was used to stain the cell nuclear (blue).



CCNI2 Antibody (Center) (Cat. #AP11897c) western blot analysis in HepG2 cell line lysates (35ug/lane). This demonstrates the CCNI2 antibody detected the CCNI2 protein (arrow).



CCNI2 Antibody (Center) (Cat. #AP11897c) immunohistochemistry analysis in formalin fixed and paraffin embedded human breast carcinoma followed by peroxidase conjugation of the secondary antibody and DAB staining. This data demonstrates the use of CCNI2 Antibody (Center) for immunohistochemistry. Clinical relevance has not been evaluated.

CCNI2 Antibody (Center) - Background

CCNI2 belongs to the cyclin family.

CCNI2 Antibody (Center) - References

Strausberg, R.L., et al. Proc. Natl. Acad. Sci. U.S.A. 99(26):16899-16903(2002)