

LRRC38 Antibody (C-term)
Affinity Purified Rabbit Polyclonal Antibody (Pab)
Catalog # AP11899b**Specification**

LRRC38 Antibody (C-term) - Product Information

Application	FC, IHC-P, WB,E
Primary Accession	Q5VT99
Other Accession	NP_001010847.1
Reactivity	Human
Host	Rabbit
Clonality	Polyclonal
Isotype	Rabbit IgG
Calculated MW	32082
Antigen Region	188-216

LRRC38 Antibody (C-term) - Additional Information**Gene ID** 126755**Other Names**

Leucine-rich repeat-containing protein 38, BK channel auxiliary gamma subunit LRRC38, LRRC38

Target/Specificity

This LRRC38 antibody is generated from rabbits immunized with a KLH conjugated synthetic peptide between 188-216 amino acids from the C-terminal region of human LRRC38.

Dilution

FC~~1:10~50

IHC-P~~1:10~50

WB~~1:1000

E~~Use at an assay dependent concentration.

Format

Purified polyclonal antibody supplied in PBS with 0.09% (W/V) sodium azide. This antibody is purified through a protein A column, followed by peptide affinity purification.

Storage

Maintain refrigerated at 2-8°C for up to 2 weeks. For long term storage store at -20°C in small aliquots to prevent freeze-thaw cycles.

Precautions

LRRC38 Antibody (C-term) is for research use only and not for use in diagnostic or therapeutic procedures.

LRRC38 Antibody (C-term) - Protein Information**Name** LRRC38

Function Auxiliary protein of the large-conductance, voltage and calcium-activated potassium channel (BK alpha). Modulates gating properties by producing a marked shift in the BK channel's voltage dependence of activation in the hyperpolarizing direction, and in the absence of calcium.

Cellular Location

Cell membrane; Single-pass type I membrane protein

Tissue Location

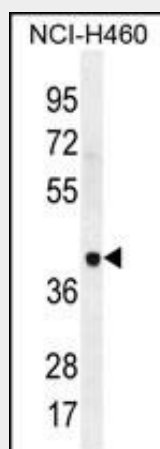
Mainly expressed in adrenal gland, thymus and skeletal muscle.

LRRC38 Antibody (C-term) - Protocols

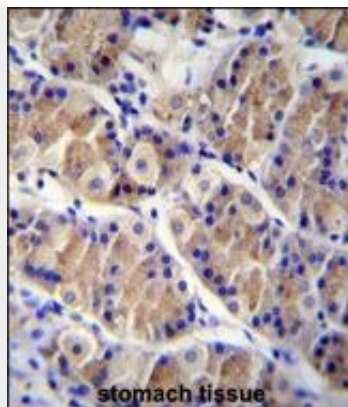
Provided below are standard protocols that you may find useful for product applications.

- [Western Blot](#)
- [Blocking Peptides](#)
- [Dot Blot](#)
- [Immunohistochemistry](#)
- [Immunofluorescence](#)
- [Immunoprecipitation](#)
- [Flow Cytometry](#)
- [Cell Culture](#)

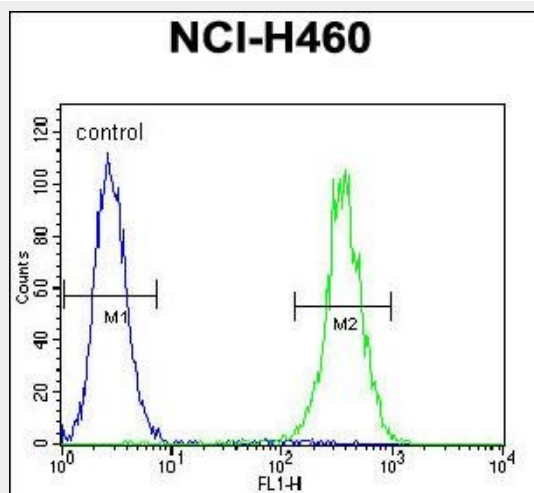
LRRC38 Antibody (C-term) - Images



LRRC38 Antibody (C-term) (Cat. #AP11899b) western blot analysis in NCI-H460 cell line lysates (35ug/lane). This demonstrates the LRRC38 antibody detected the LRRC38 protein (arrow).



LRRC38 Antibody (C-term) (Cat. #AP11899b) immunohistochemistry analysis in formalin fixed and paraffin embedded human stomach tissue followed by peroxidase conjugation of the secondary antibody and DAB staining. This data demonstrates the use of LRRC38 Antibody (C-term) for immunohistochemistry. Clinical relevance has not been evaluated.



LRRC38 Antibody (C-term) (Cat. #AP11899b) flow cytometric analysis of NCI-H460 cells (right histogram) compared to a negative control cell (left histogram). FITC-conjugated goat-anti-rabbit secondary antibodies were used for the analysis.

LRRC38 Antibody (C-term) - Background

The function of this protein remains unknown.

LRRC38 Antibody (C-term) - References

Strausberg, R.L., et al. Proc. Natl. Acad. Sci. U.S.A. 99(26):16899-16903(2002)