

WDR42C Antibody (N-term)
Affinity Purified Rabbit Polyclonal Antibody (Pab)
Catalog # AP11900a**Specification**

WDR42C Antibody (N-term) - Product Information

Application	IF, WB, IHC-P,E
Primary Accession	P0C7V8
Reactivity	Human
Host	Rabbit
Clonality	Polyclonal
Isotype	Rabbit IgG
Calculated MW	71191
Antigen Region	112-140

WDR42C Antibody (N-term) - Additional Information**Other Names**

DDB1- and CUL4-associated factor 8-like protein 2, WD repeat-containing protein 42C, DCAF8L2, WDR42C

Target/Specificity

This WDR42C antibody is generated from rabbits immunized with a KLH conjugated synthetic peptide between 112-140 amino acids from the N-terminal region of human WDR42C.

Dilution

IF~~1:10~50
WB~~1:1000
IHC-P~~1:10~50

Format

Purified polyclonal antibody supplied in PBS with 0.09% (W/V) sodium azide. This antibody is purified through a protein A column, followed by peptide affinity purification.

Storage

Maintain refrigerated at 2-8°C for up to 2 weeks. For long term storage store at -20°C in small aliquots to prevent freeze-thaw cycles.

Precautions

WDR42C Antibody (N-term) is for research use only and not for use in diagnostic or therapeutic procedures.

WDR42C Antibody (N-term) - Protein Information

Name DCAF8L2

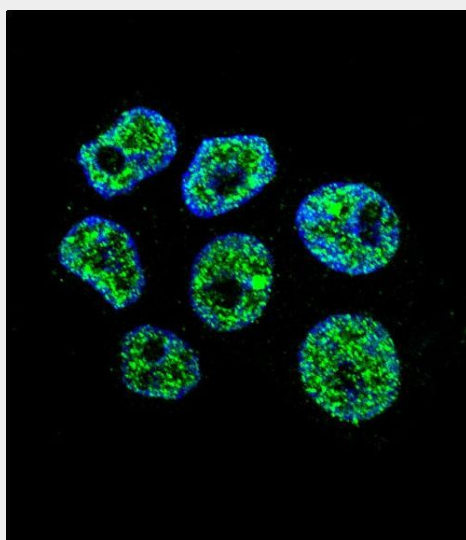
Synonyms WDR42C

WDR42C Antibody (N-term) - Protocols

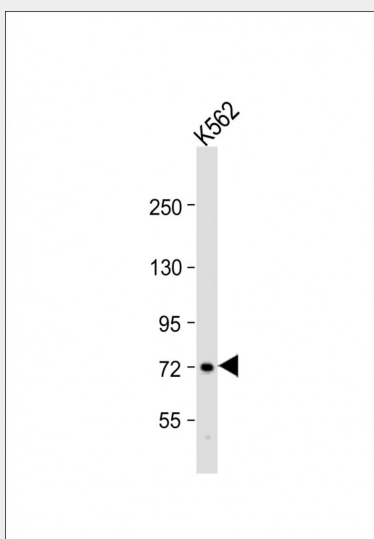
Provided below are standard protocols that you may find useful for product applications.

- [Western Blot](#)
- [Blocking Peptides](#)
- [Dot Blot](#)
- [Immunohistochemistry](#)
- [Immunofluorescence](#)
- [Immunoprecipitation](#)
- [Flow Cytometry](#)
- [Cell Culture](#)

WDR42C Antibody (N-term) - Images

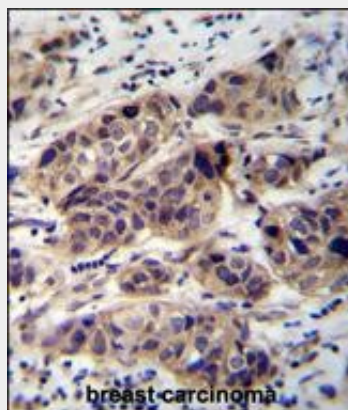


Confocal immunofluorescent analysis of WDR42C Antibody (N-term)(Cat#AP11900a) with ZR-75-1 cell followed by Alexa Fluor 488-conjugated goat anti-rabbit IgG (green). DAPI was used to stain the cell nuclear (blue).



Anti-WDR42C Antibody (N-term) at 1:1000 dilution + K562 whole cell lysate Lysates/proteins at

20 µg per lane. Secondary Goat Anti-Rabbit IgG, (H+L), Peroxidase conjugated at 1/10000 dilution. Predicted band size : 71 kDa Blocking/Dilution buffer: 5% NFDM/TBST.



WDR42C Antibody (N-term) (Cat. #AP11900a) immunohistochemistry analysis in formalin fixed and paraffin embedded human breast carcinoma followed by peroxidase conjugation of the secondary antibody and DAB staining. This data demonstrates the use of WDR42C Antibody (N-term) for immunohistochemistry. Clinical relevance has not been evaluated.

WDR42C Antibody (N-term) - Background

The function of this protein remains unknown.