

SH2D4B Antibody (C-term)
Affinity Purified Rabbit Polyclonal Antibody (Pab)
Catalog # AP11902b**Specification**

SH2D4B Antibody (C-term) - Product Information

Application	IF, IHC-P, WB,E
Primary Accession	Q5SQS7
Other Accession	NP_997255.2
Reactivity	Human
Host	Rabbit
Clonality	Polyclonal
Isotype	Rabbit IgG
Calculated MW	51232
Antigen Region	374-402

SH2D4B Antibody (C-term) - Additional Information**Gene ID** 387694**Other Names**

SH2 domain-containing protein 4B, SH2D4B

Target/Specificity

This SH2D4B antibody is generated from rabbits immunized with a KLH conjugated synthetic peptide between 374-402 amino acids from the C-terminal region of human SH2D4B.

Dilution

IF~~1:10~50

IHC-P~~1:10~50

WB~~1:1000

E~~Use at an assay dependent concentration.

Format

Purified polyclonal antibody supplied in PBS with 0.09% (W/V) sodium azide. This antibody is purified through a protein A column, followed by peptide affinity purification.

Storage

Maintain refrigerated at 2-8°C for up to 2 weeks. For long term storage store at -20°C in small aliquots to prevent freeze-thaw cycles.

Precautions

SH2D4B Antibody (C-term) is for research use only and not for use in diagnostic or therapeutic procedures.

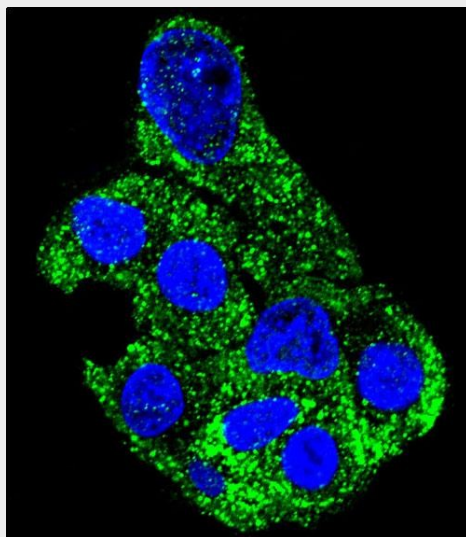
SH2D4B Antibody (C-term) - Protein Information**Name** SH2D4B

SH2D4B Antibody (C-term) - Protocols

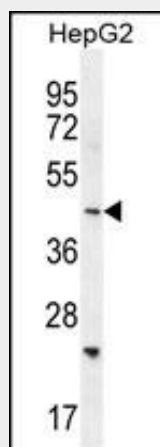
Provided below are standard protocols that you may find useful for product applications.

- [Western Blot](#)
- [Blocking Peptides](#)
- [Dot Blot](#)
- [Immunohistochemistry](#)
- [Immunofluorescence](#)
- [Immunoprecipitation](#)
- [Flow Cytometry](#)
- [Cell Culture](#)

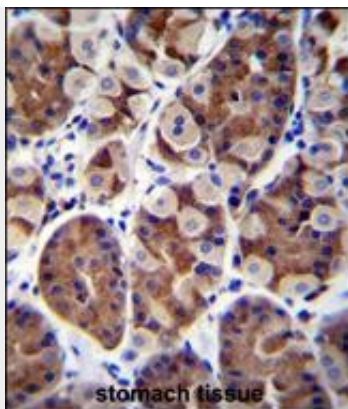
SH2D4B Antibody (C-term) - Images



Confocal immunofluorescent analysis of SH2D4B Antibody (C-term)(Cat#AP11902b) with HepG2 cell followed by Alexa Fluor 488-conjugated goat anti-rabbit IgG (green). DAPI was used to stain the cell nuclear (blue).



SH2D4B Antibody (C-term) (Cat. #AP11902b) western blot analysis in HepG2 cell line lysates (35ug/lane). This demonstrates the SH2D4B antibody detected the SH2D4B protein (arrow).



SH2D4B Antibody (C-term) (Cat. #AP11902b) immunohistochemistry analysis in formalin fixed and paraffin embedded human stomach tissue followed by peroxidase conjugation of the secondary antibody and DAB staining. This data demonstrates the use of SH2D4B Antibody (C-term) for immunohistochemistry. Clinical relevance has not been evaluated.

SH2D4B Antibody (C-term) - Background

The function of this protein remains unknown.

SH2D4B Antibody (C-term) - References

Rose, J. Phd, et al. Mol. Med. (2010) In press :