

LOC339742 Antibody (C-term)
Affinity Purified Rabbit Polyclonal Antibody (Pab)
Catalog # AP11905b**Specification**

LOC339742 Antibody (C-term) - Product Information

Application	WB, FC, IHC-P,E
Primary Accession	Q86VD6
Reactivity	Human
Host	Rabbit
Clonality	Polyclonal
Isotype	Rabbit IgG
Calculated MW	21499
Antigen Region	147-176

LOC339742 Antibody (C-term) - Additional Information**Other Names**

LOC339742

Target/Specificity

This LOC339742 antibody is generated from rabbits immunized with a KLH conjugated synthetic peptide between 147-176 amino acids from the C-terminal region of human LOC339742.

Dilution

WB~~1:1000

FC~~1:10~50

IHC-P~~1:10~50

E~~Use at an assay dependent concentration.

Format

Purified polyclonal antibody supplied in PBS with 0.09% (W/V) sodium azide. This antibody is purified through a protein A column, followed by peptide affinity purification.

Storage

Maintain refrigerated at 2-8°C for up to 2 weeks. For long term storage store at -20°C in small aliquots to prevent freeze-thaw cycles.

Precautions

LOC339742 Antibody (C-term) is for research use only and not for use in diagnostic or therapeutic procedures.

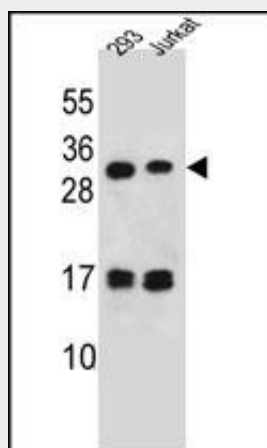
LOC339742 Antibody (C-term) - Protein Information**Name** LOC339742 {ECO:0000313|EMBL:AAH45732.1}

LOC339742 Antibody (C-term) - Protocols

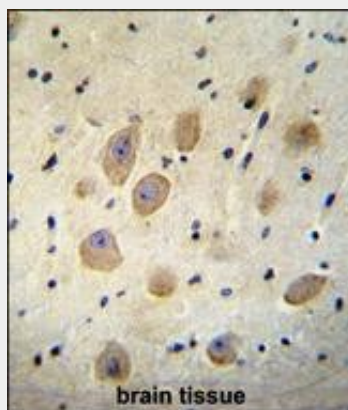
Provided below are standard protocols that you may find useful for product applications.

- [Western Blot](#)
- [Blocking Peptides](#)
- [Dot Blot](#)
- [Immunohistochemistry](#)
- [Immunofluorescence](#)
- [Immunoprecipitation](#)
- [Flow Cytometry](#)
- [Cell Culture](#)

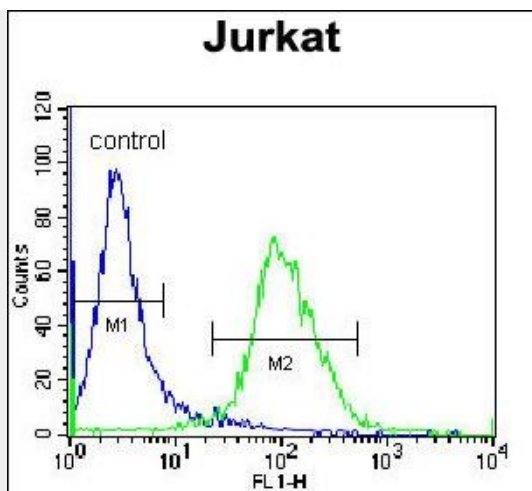
LOC339742 Antibody (C-term) - Images



LOC339742 Antibody (C-term) (Cat. #AP11905b) western blot analysis in 293, Jurkat cell line lysates (35ug/lane). This demonstrates the LOC339742 antibody detected the LOC339742 protein (arrow).



LOC339742 Antibody (C-term) (Cat. #AP11905b) immunohistochemistry analysis in formalin fixed and paraffin embedded human brain tissue followed by peroxidase conjugation of the secondary antibody and DAB staining. This data demonstrates the use of LOC339742 Antibody (C-term) for immunohistochemistry. Clinical relevance has not been evaluated.



LOC339742 Antibody (C-term) (Cat. #AP11905b) flow cytometric analysis of Jurkat cells (right histogram) compared to a negative control cell (left histogram). FITC-conjugated donkey-anti-rabbit secondary antibodies were used for the analysis.

LOC339742 Antibody (C-term) - Background

The function of this protein remains unknown.