

C19orf84 Antibody (C-term)
Affinity Purified Rabbit Polyclonal Antibody (Pab)
Catalog # AP11909b**Specification**

C19orf84 Antibody (C-term) - Product Information

Application	WB,E
Primary Accession	K7EN44
Other Accession	I3L1E1 , NP_001180552
Reactivity	Human
Predicted	Green Monkey
Host	Rabbit
Clonality	Polyclonal
Isotype	Rabbit IgG
Antigen Region	147-176

C19orf84 Antibody (C-term) - Additional Information**Other Names**

Chromosome 19 open reading frame 84

Target/Specificity

This C19orf84 antibody is generated from rabbits immunized with a KLH conjugated synthetic peptide between 147-176 amino acids from the C-terminal region of human C19orf84 .

Dilution

WB~~1:1000

E~~Use at an assay dependent concentration.

Format

Purified polyclonal antibody supplied in PBS with 0.09% (W/V) sodium azide. This antibody is purified through a protein A column, followed by peptide affinity purification.

Storage

Maintain refrigerated at 2-8°C for up to 2 weeks. For long term storage store at -20°C in small aliquots to prevent freeze-thaw cycles.

Precautions

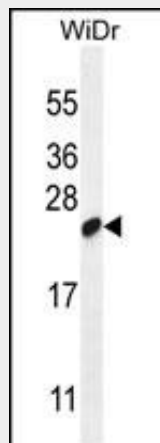
C19orf84 Antibody (C-term) is for research use only and not for use in diagnostic or therapeutic procedures.

C19orf84 Antibody (C-term) - Protein Information**C19orf84 Antibody (C-term) - Protocols**

Provided below are standard protocols that you may find useful for product applications.

- [Western Blot](#)
- [Blocking Peptides](#)
- [Dot Blot](#)
- [Immunohistochemistry](#)
- [Immunofluorescence](#)
- [Immunoprecipitation](#)
- [Flow Cytometry](#)
- [Cell Culture](#)

C19orf84 Antibody (C-term) - Images



C19orf84 Antibody (C-term) (Cat. #AP11909b) western blot analysis in WiDr cell line lysates (35ug/lane). This demonstrates the C19orf84 antibody detected the C19orf84 protein (arrow).

C19orf84 Antibody (C-term) - Background

The function of this protein remains unknown.

C19orf84 Antibody (C-term) - References

Strausberg, R.L., et al. Proc. Natl. Acad. Sci. U.S.A. 99(26):16899-16903(2002)