

LRRC72 Antibody (C-term)
Affinity Purified Rabbit Polyclonal Antibody (Pab)
Catalog # AP11910b**Specification**

LRRC72 Antibody (C-term) - Product Information

Application	WB,E
Primary Accession	A6NJI9
Other Accession	NP_001182209
Reactivity	Human
Host	Rabbit
Clonality	Polyclonal
Isotype	Rabbit IgG
Calculated MW	33656
Antigen Region	193-221

LRRC72 Antibody (C-term) - Additional Information**Gene ID** 100506049**Other Names**

Leucine-rich repeat-containing protein 72, LRRC72

Target/Specificity

This LRRC72 antibody is generated from rabbits immunized with a KLH conjugated synthetic peptide between 193-221 amino acids from the C-terminal region of human LRRC72.

Dilution

WB~~1:1000

Format

Purified polyclonal antibody supplied in PBS with 0.09% (W/V) sodium azide. This antibody is purified through a protein A column, followed by peptide affinity purification.

Storage

Maintain refrigerated at 2-8°C for up to 2 weeks. For long term storage store at -20°C in small aliquots to prevent freeze-thaw cycles.

Precautions

LRRC72 Antibody (C-term) is for research use only and not for use in diagnostic or therapeutic procedures.

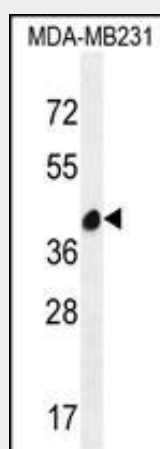
LRRC72 Antibody (C-term) - Protein Information**Name** LRRC72

LRRC72 Antibody (C-term) - Protocols

Provided below are standard protocols that you may find useful for product applications.

- [Western Blot](#)
- [Blocking Peptides](#)
- [Dot Blot](#)
- [Immunohistochemistry](#)
- [Immunofluorescence](#)
- [Immunoprecipitation](#)
- [Flow Cytometry](#)
- [Cell Culture](#)

LRRC72 Antibody (C-term) - Images



LRRC72 Antibody (C-term) (Cat. #AP11910b) western blot analysis in MDA-MB231 cell line lysates (35ug/lane). This demonstrates the LRRC72 antibody detected the LRRC72 protein (arrow).

LRRC72 Antibody (C-term) - Background

The function of this protein remains unknown.

LRRC72 Antibody (C-term) - References

Rose, J.E., et al. Mol. Med. 16 (7-8), 247-253 (2010) :