

**NKX1-1 Antibody (Center)**  
**Affinity Purified Rabbit Polyclonal Antibody (Pab)**  
**Catalog # AP11916c****Specification**

---

**NKX1-1 Antibody (Center) - Product Information**

Application	WB, IF, E
Primary Accession	<a href="#">Q15270</a>
Other Accession	<a href="#">XP_931434.4</a>
Reactivity	Human
Host	Rabbit
Clonality	Polyclonal
Isotype	Rabbit IgG
Calculated MW	44012
Antigen Region	1-1

**NKX1-1 Antibody (Center) - Additional Information****Gene ID** 54729**Other Names**

NK1 transcription factor-related protein 1, Homeobox protein 153, HPX-153, Homeobox protein SAX-2, NKX-11, NKX1-1, HPX153

**Target/Specificity**

This NKX1-1 antibody is generated from rabbits immunized with a KLH conjugated synthetic peptide between 230-258 amino acids from the Central region of human NKX1-1.

**Dilution**

WB~~1:1000

IF~~1:10~50

E~~Use at an assay dependent concentration.

**Format**

Purified polyclonal antibody supplied in PBS with 0.09% (W/V) sodium azide. This antibody is purified through a protein A column, followed by peptide affinity purification.

**Storage**

Maintain refrigerated at 2-8°C for up to 2 weeks. For long term storage store at -20°C in small aliquots to prevent freeze-thaw cycles.

**Precautions**

NKX1-1 Antibody (Center) is for research use only and not for use in diagnostic or therapeutic procedures.

**NKX1-1 Antibody (Center) - Protein Information****Name** NKX1-1 ([HGNC:24975](#))

**Function** May be required for the coordinated crosstalk of factors involved in the maintenance of energy homeostasis, possibly by regulating the transcription of specific factors involved in energy balance.

**Cellular Location**

Nucleus {ECO:0000255|PROSITE-ProRule:PRU00108}.

**Tissue Location**

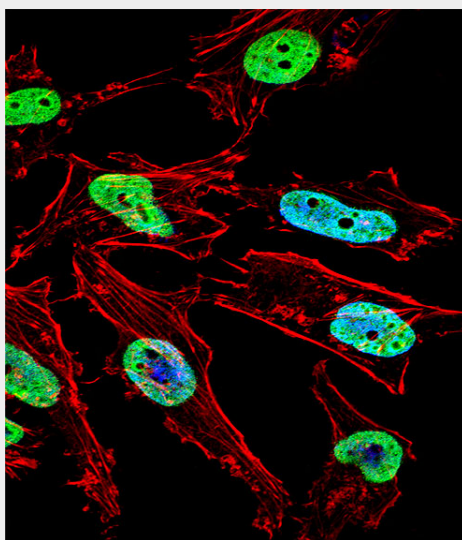
Expressed in hemopoietic progenitor cells.

### NKX1-1 Antibody (Center) - Protocols

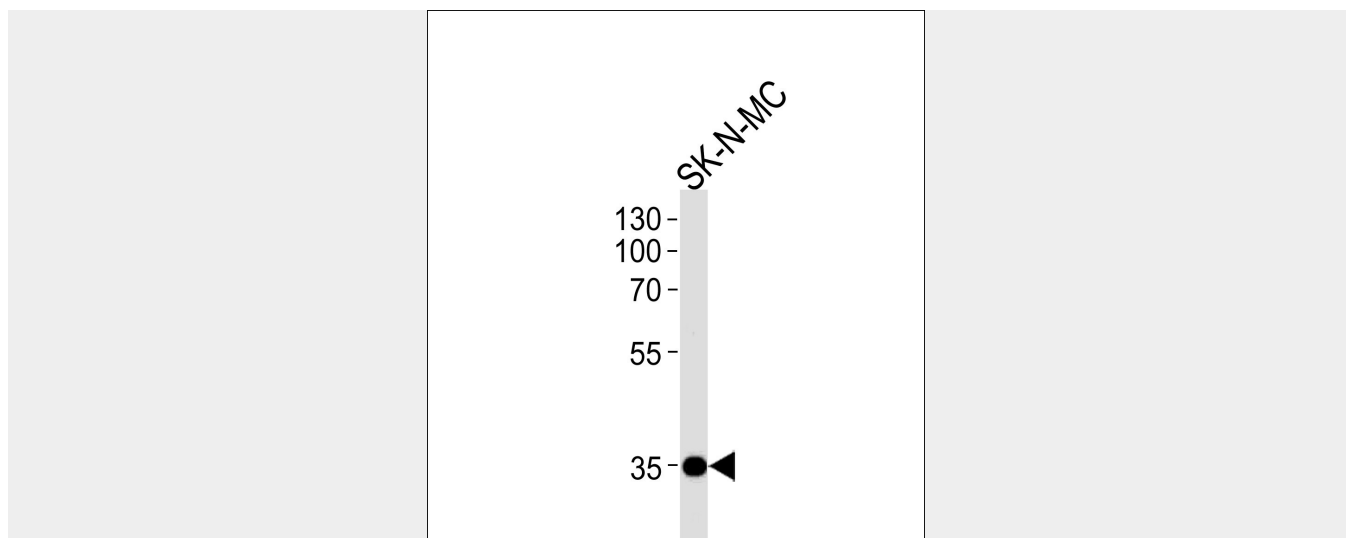
Provided below are standard protocols that you may find useful for product applications.

- [Western Blot](#)
- [Blocking Peptides](#)
- [Dot Blot](#)
- [Immunohistochemistry](#)
- [Immunofluorescence](#)
- [Immunoprecipitation](#)
- [Flow Cytometry](#)
- [Cell Culture](#)

### NKX1-1 Antibody (Center) - Images



Fluorescent confocal image of HeLa cell stained with NKX1-1 Antibody (Center)(Cat#AP11916c). HeLa cells were fixed with 4% PFA (20 min), permeabilized with Triton X-100 (0.1%, 10 min), then incubated with NKX1-1 primary antibody (1:25, 1 h at 37°C). For secondary antibody, Alexa Fluor® 488 conjugated donkey anti-rabbit antibody (green) was used (1:400, 50 min at 37°C). Cytoplasmic actin was counterstained with Alexa Fluor® 555 (red) conjugated Phalloidin (7units/ml, 1 h at 37°C). Nuclei were counterstained with DAPI (blue) (10 µg/ml, 10 min). NKX1-1 immunoreactivity is localized to Nucleus significantly.



NKX1-1 Antibody (Center) (Cat. #AP11916c) western blot analysis in SK-N-MC cell line lysates (35ug/lane). This demonstrates the NKX1-1 antibody detected the NKX1-1 protein (arrow).

#### **NKX1-1 Antibody (Center) - Background**

The function of this protein remains unknown.