

**HSP90B1 Antibody (Center)**  
**Affinity Purified Rabbit Polyclonal Antibody (Pab)**  
**Catalog # AP11926c****Specification**

---

**HSP90B1 Antibody (Center) - Product Information**

Application	WB, FC, IHC-P,E
Primary Accession	<a href="#">P14625</a>
Other Accession	<a href="#">Q4R520</a> , <a href="#">NP_003290.1</a>
Reactivity	Human
Predicted	Monkey
Host	Rabbit
Clonality	Polyclonal
Isotype	Rabbit IgG
Calculated MW	92469
Antigen Region	460-487

**HSP90B1 Antibody (Center) - Additional Information****Gene ID** 7184**Other Names**

Endoplasmic, 94 kDa glucose-regulated protein, GRP-94, Heat shock protein 90 kDa beta member 1, Tumor rejection antigen 1, gp96 homolog, HSP90B1, GRP94, TRA1

**Target/Specificity**

This HSP90B1 antibody is generated from rabbits immunized with a KLH conjugated synthetic peptide between 460-487 amino acids from the Central region of human HSP90B1.

**Dilution**

WB~~1:1000  
FC~~1:10~50  
IHC-P~~1:10~50  
E~~Use at an assay dependent concentration.

**Format**

Purified polyclonal antibody supplied in PBS with 0.09% (W/V) sodium azide. This antibody is purified through a protein A column, followed by peptide affinity purification.

**Storage**

Maintain refrigerated at 2-8°C for up to 2 weeks. For long term storage store at -20°C in small aliquots to prevent freeze-thaw cycles.

**Precautions**

HSP90B1 Antibody (Center) is for research use only and not for use in diagnostic or therapeutic procedures.

**HSP90B1 Antibody (Center) - Protein Information**

**Name** HSP90B1 {ECO:0000303|PubMed:39509507, ECO:0000312|HGNC:HGNC:12028}

**Function** ATP-dependent chaperone involved in the processing of proteins in the endoplasmic reticulum, regulating their transport (PubMed:[23572575](#), PubMed:[39509507](#)). Together with MESD, acts as a modulator of the Wnt pathway by promoting the folding of LRP6, a coreceptor of the canonical Wnt pathway (PubMed:[23572575](#), PubMed:[39509507](#)). When associated with CNPY3, required for proper folding of Toll-like receptors (PubMed:[11584270](#)). Promotes folding and trafficking of TLR4 to the cell surface (PubMed:[11584270](#)). May participate in the unfolding of cytosolic leaderless cargos (lacking the secretion signal sequence) such as the interleukin 1/IL-1 to facilitate their translocation into the ERGIC (endoplasmic reticulum- Golgi intermediate compartment) and secretion; the translocation process is mediated by the cargo receptor TMED10 (PubMed:[32272059](#)).

#### Cellular Location

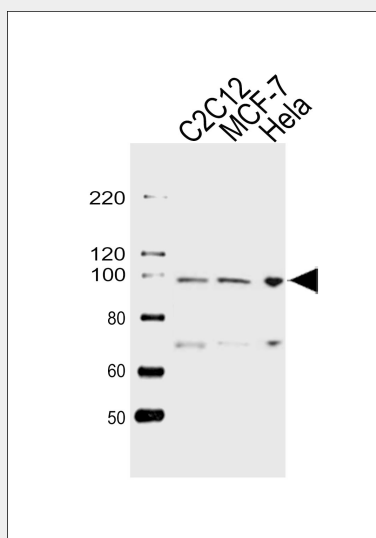
Endoplasmic reticulum lumen. Sarcoplasmic reticulum lumen {ECO:0000250|UniProtKB:P41148}. Melanosome Note=Identified by mass spectrometry in melanosome fractions from stage I to stage IV.

#### HSP90B1 Antibody (Center) - Protocols

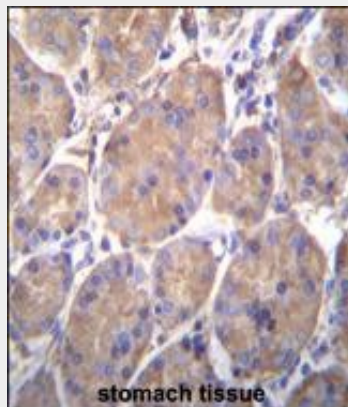
Provided below are standard protocols that you may find useful for product applications.

- [Western Blot](#)
- [Blocking Peptides](#)
- [Dot Blot](#)
- [Immunohistochemistry](#)
- [Immunofluorescence](#)
- [Immunoprecipitation](#)
- [Flow Cytometry](#)
- [Cell Culture](#)

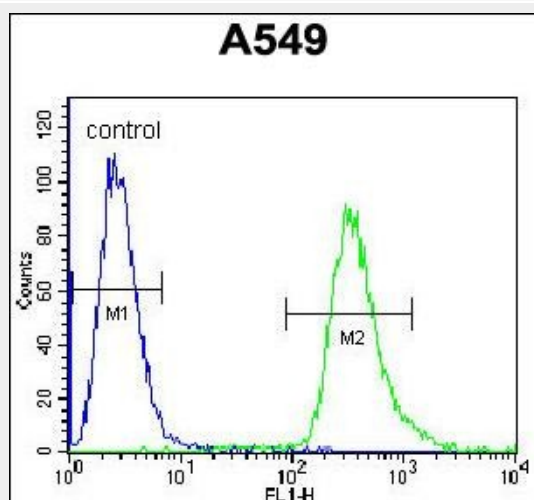
#### HSP90B1 Antibody (Center) - Images



Western blot analysis of lysates from C2C12, MCF-7, HeLa cell line (from left to right), using HSP90B1 Antibody (Center)(Cat. #AP11926c). AP11926c was diluted at 1:1000 at each lane. A goat anti-rabbit IgG H&L(HRP) at 1:10000 dilution was used as the secondary antibody. Lysates at 20ug per lane.



HSP90B1 Antibody (Center) (Cat. #AP11926c) immunohistochemistry analysis in formalin fixed and paraffin embedded human stomach tissue followed by peroxidase conjugation of the secondary antibody and DAB staining. This data demonstrates the use of HSP90B1 Antibody (Center) for immunohistochemistry. Clinical relevance has not been evaluated.



HSP90B1 Antibody (Center) (Cat. #AP11926c) flow cytometric analysis of A549 cells (right histogram) compared to a negative control cell (left histogram). FITC-conjugated goat-anti-rabbit secondary antibodies were used for the analysis.

### **HSP90B1 Antibody (Center) - Background**

HSP90 proteins are highly conserved molecular chaperones that have key roles in signal transduction, protein folding, protein degradation, and morphologic evolution. HSP90 proteins normally associate with other cochaperones and play important roles in folding newly synthesized proteins or stabilizing and refolding denatured proteins after stress. HSP90B1 is an endoplasmic reticulum HSP90 protein. Other HSP90 proteins are found in cytosol (see HSP90AA1; MIM 140571) and mitochondria (TRAP1; MIM 606219) (Chen et al., 2005 [PubMed 16269234]).

### **HSP90B1 Antibody (Center) - References**

Bailey, S.D., et al. Diabetes Care 33(10):2250-2253(2010)  
Suzuki, S., et al. Biochem. Biophys. Res. Commun. 398(3):525-531(2010)  
Bloor, S., et al. Proc. Natl. Acad. Sci. U.S.A. 107(15):6970-6975(2010)  
Davila, S., et al. Genes Immun. 11(3):232-238(2010)

Wang, X., et al. Clin. Dev. Immunol. 2010, 212537 (2010) :