

**JMJD2B Antibody (N-term)**  
**Affinity Purified Rabbit Polyclonal Antibody (Pab)**  
**Catalog # AP11950a****Specification**

---

**JMJD2B Antibody (N-term) - Product Information**

Application	<b>WB,E</b>
Primary Accession	<a href="#">O94953</a>
Other Accession	<a href="#">NP_055830</a>
Reactivity	<b>Human</b>
Host	<b>Rabbit</b>
Clonality	<b>Polyclonal</b>
Isotype	<b>Rabbit IgG</b>
Calculated MW	<b>121897</b>
Antigen Region	<b>428-459</b>

**JMJD2B Antibody (N-term) - Additional Information****Gene ID** 23030**Other Names**

Lysine-specific demethylase 4B, 11411-, JmjC domain-containing histone demethylation protein 3B, Jumonji domain-containing protein 2B, KDM4B, JHDM3B, JMJD2B, KIAA0876

**Target/Specificity**

This JMJD2B antibody is generated from rabbits immunized with a KLH conjugated synthetic peptide between 428-459 amino acids from the N-terminal region of human JMJD2B.

**Dilution**

WB~~1:1000

**Format**

Purified polyclonal antibody supplied in PBS with 0.09% (W/V) sodium azide. This antibody is purified through a protein A column, followed by peptide affinity purification.

**Storage**

Maintain refrigerated at 2-8°C for up to 2 weeks. For long term storage store at -20°C in small aliquots to prevent freeze-thaw cycles.

**Precautions**

JMJD2B Antibody (N-term) is for research use only and not for use in diagnostic or therapeutic procedures.

**JMJD2B Antibody (N-term) - Protein Information****Name** KDM4B**Synonyms** JHDM3B, JMJD2B, KIAA0876

**Function** Histone demethylase that specifically demethylates 'Lys-9' of histone H3, thereby playing a role in histone code. Does not demethylate histone H3 'Lys-4', H3 'Lys-27', H3 'Lys-36' nor H4 'Lys-20'. Only able to demethylate trimethylated H3 'Lys-9', with a weaker activity than KDM4A, KDM4C and KDM4D. Demethylation of Lys residue generates formaldehyde and succinate (PubMed:[16603238](#), PubMed:[28262558](#)). Plays a critical role in the development of the central nervous system (CNS).

#### Cellular Location

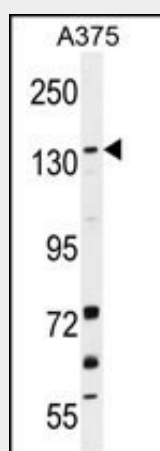
Nucleus {ECO:0000255|PROSITE-ProRule:PRU00537, ECO:0000269|PubMed:15927959}

### JMJD2B Antibody (N-term) - Protocols

Provided below are standard protocols that you may find useful for product applications.

- [Western Blot](#)
- [Blocking Peptides](#)
- [Dot Blot](#)
- [Immunohistochemistry](#)
- [Immunofluorescence](#)
- [Immunoprecipitation](#)
- [Flow Cytometry](#)
- [Cell Culture](#)

### JMJD2B Antibody (N-term) - Images



JMJD2B Antibody (N-term) (Cat. #AP11950a) western blot analysis in A375 cell line lysates (35ug/lane). This demonstrates the JMJD2B antibody detected the JMJD2B protein (arrow).

### JMJD2B Antibody (N-term) - Background

KDM4B is a histone demethylase that specifically demethylates 'Lys-9' of histone H3, thereby playing a role in histone code. It does not demethylate histone H3 'Lys-4', H3 'Lys-27', H3 'Lys-36' nor H4 'Lys-20' and only able to demethylate trimethylated H3 'Lys-9', with a weaker activity than KDM4A, KDM4C and KDM4D. Demethylation of Lys residue generates formaldehyde and succinate.

### JMJD2B Antibody (N-term) - References

- Yang, J., et al. Cancer Res. 70(16):6456-6466(2010)  
Rose, J.E., et al. Mol. Med. 16 (7-8), 247-253 (2010) :  
Beyer, S., et al. J. Biol. Chem. 283(52):36542-36552(2008)

Pollard, P.J., et al. *Biochem. J.* 416(3):387-394(2008)  
Kato, Y., et al. *Int. J. Mol. Med.* 20(2):269-273(2007)