

**POSTN Antibody (C-term)**  
**Affinity Purified Rabbit Polyclonal Antibody (Pab)**  
**Catalog # AP11962b**

**Specification**

---

**POSTN Antibody (C-term) - Product Information**

Application	IHC-P, IF, WB, FC,E
Primary Accession	<a href="#">Q15063</a>
Other Accession	<a href="#">NP_006466</a>
Reactivity	Human, Rat
Host	Rabbit
Clonality	Polyclonal
Isotype	Rabbit IgG
Antigen Region	687-716

**POSTN Antibody (C-term) - Additional Information**

**Gene ID** 10631

**Other Names**

Periostin, PN, Osteoblast-specific factor 2, OSF-2, POSTN, OSF2

**Target/Specificity**

This POSTN antibody is generated from rabbits immunized with a KLH conjugated synthetic peptide between 687-716 amino acids from the C-terminal region of human POSTN.

**Dilution**

IHC-P~~1:100

IF~~1:10~50

WB~~1:1000

FC~~1:25

E~~Use at an assay dependent concentration.

**Format**

Purified polyclonal antibody supplied in PBS with 0.09% (W/V) sodium azide. This antibody is purified through a protein A column, followed by peptide affinity purification.

**Storage**

Maintain refrigerated at 2-8°C for up to 2 weeks. For long term storage store at -20°C in small aliquots to prevent freeze-thaw cycles.

**Precautions**

POSTN Antibody (C-term) is for research use only and not for use in diagnostic or therapeutic procedures.

**POSTN Antibody (C-term) - Protein Information**

**Name** POSTN

**Synonyms** OSF2

**Function** Induces cell attachment and spreading and plays a role in cell adhesion (PubMed:[12235007](#)). Enhances incorporation of BMP1 in the fibronectin matrix of connective tissues, and subsequent proteolytic activation of lysyl oxidase LOX (By similarity).

**Cellular Location**

Golgi apparatus {ECO:0000250|UniProtKB:Q62009}. Secreted Secreted, extracellular space, extracellular matrix Note=Colocalizes with BMP1 in the Golgi {ECO:0000250|UniProtKB:Q62009}

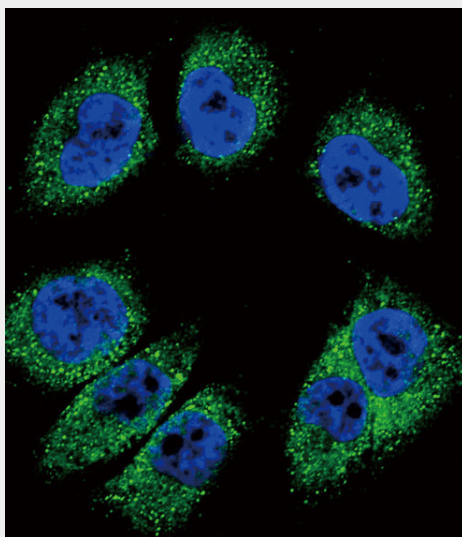
**Tissue Location**

Widely expressed with highest levels in aorta, stomach, lower gastrointestinal tract, placenta, uterus, thyroid tissue and breast. Expressed in the kidney (PubMed:21763681). Expressed in the lung (PubMed:22079858). Up-regulated in epithelial ovarian tumors. Not expressed in normal ovaries. Also highly expressed at the tumor periphery of lung carcinoma tissue but not within the tumor Overexpressed in breast cancers.

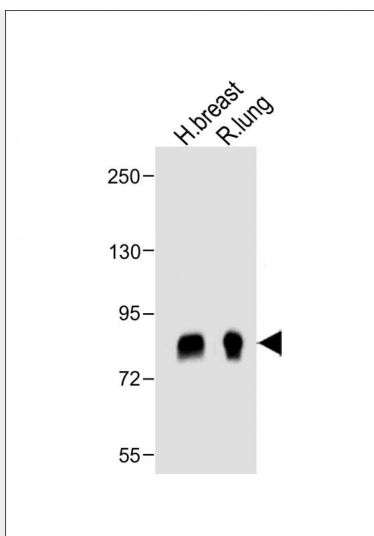
**POSTN Antibody (C-term) - Protocols**

Provided below are standard protocols that you may find useful for product applications.

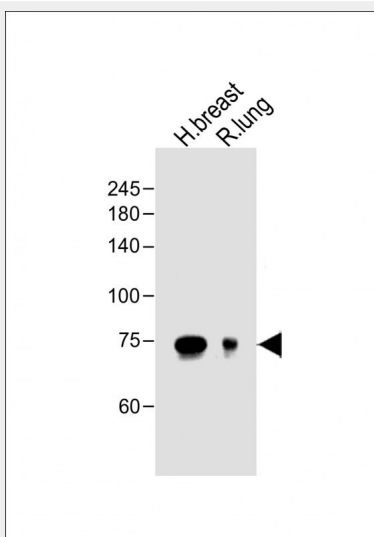
- [Western Blot](#)
- [Blocking Peptides](#)
- [Dot Blot](#)
- [Immunohistochemistry](#)
- [Immunofluorescence](#)
- [Immunoprecipitation](#)
- [Flow Cytometry](#)
- [Cell Culture](#)

**POSTN Antibody (C-term) - Images**

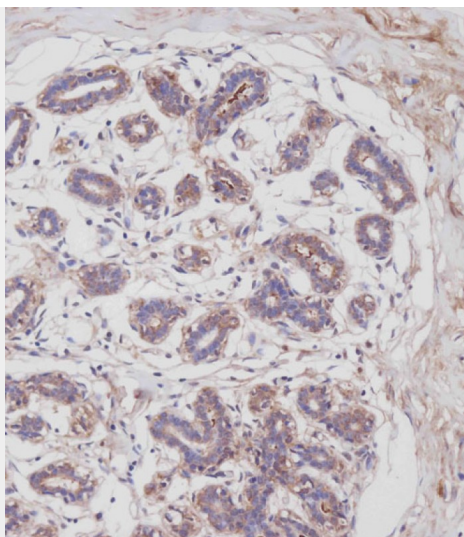
Confocal immunofluorescent analysis of POSTN Antibody (C-term)(Cat#AP11962b) with A375 cell followed by Alexa Fluor 488-conjugated goat anti-rabbit IgG (green). DAPI was used to stain the cell nuclear (blue).



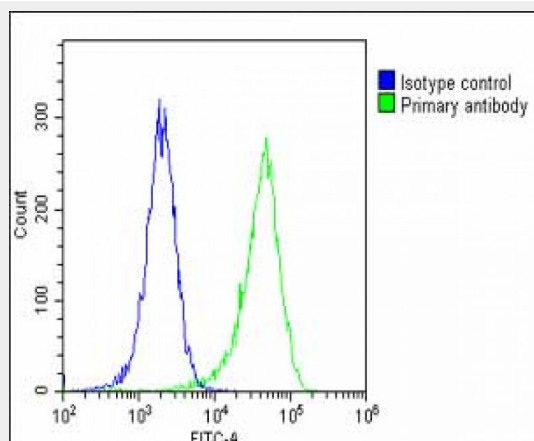
All lanes : Anti- POSTN Antibody (C-term) at 1:1000 dilution Lane 1: human breast lysate Lane 2: rat lung lysate Lysates/proteins at 20  $\mu$ g per lane. Secondary Goat Anti-Rabbit IgG, (H+L), Peroxidase conjugated at 1/10000 dilution. Predicted band size : 93 kDa Blocking/Dilution buffer: 5% NFDM/TBST.



All lanes : Anti- POSTN Antibody (C-term) at 1:1000 dilution Lane 1: human breast lysate Lane 2: rat lung lysate Lysates/proteins at 20  $\mu$ g per lane. Secondary Goat Anti-Rabbit IgG, (H+L), Peroxidase conjugated at 1/10000 dilution. Predicted band size : 93 kDa Blocking/Dilution buffer: 5% NFDM/TBST.



Immunohistochemical analysis of AP11962B on paraffin-embedded Human breast tissue. Tissue was fixed with formaldehyde at room temperature. Heat induced epitope retrieval was performed by EDTA buffer (pH9. 0). Samples were incubated with primary antibody(1:100) for 1 hour at room temperature. Undiluted CRF Anti-Polyvalent HRP Polymer antibody was used as the secondary antibody.



Overlay histogram showing Hela cells stained with AP11962B(green line). The cells were fixed with 2% paraformaldehyde (10 min) and then permeabilized with 90% methanol for 10 min. The cells were then incubated in 2% bovine serum albumin to block non-specific protein-protein interactions followed by the antibody (AP11962B, 1:25 dilution) for 60 min at 37°C. The secondary antibody used was Goat-Anti-Rabbit IgG, DyLight® 488 Conjugated Highly Cross-Adsorbed(1583138) at 1/200 dilution for 40 min at 37°C. Isotype control antibody (blue line) was rabbit IgG1 (1µg/1x10<sup>6</sup> cells) used under the same conditions. Acquisition of >10, 000 events was performed.

#### POSTN Antibody (C-term) - Background

POSTN binds to heparin. It induces cell attachment and spreading and plays a role in cell adhesion and may play a role in extracellular matrix mineralization.

#### POSTN Antibody (C-term) - References

- Zhu, M., et al. Gynecol. Oncol. 119(2):337-344(2010)  
Bailey, S.D., et al. Diabetes Care 33(10):2250-2253(2010)  
Takada, M., et al. Biochem. Biophys. Res. Commun. 399(2):221-226(2010)

Sidhu, S.S., et al. Proc. Natl. Acad. Sci. U.S.A. 107(32):14170-14175(2010)

Tischler, V., et al. BMC Cancer 10, 273 (2010) :

**POSTN Antibody (C-term) - Citations**

- [Periostin \(POSTN\) regulates tumor resistance to antiangiogenic therapy in glioma models.](#)