

TBC1D3H Antibody (N-term)
Affinity Purified Rabbit Polyclonal Antibody (Pab)
Catalog # AP11978a**Specification**

TBC1D3H Antibody (N-term) - Product Information

Application	WB,E
Primary Accession	P0C7X1
Other Accession	B9A6J9 , A0A087X1G2 , A0A087WXS9 , Q6DHY5 , A6NER0 , A0A087X179 , A0A087WVF3 , Q6IPX1 , A6NDS4 , Q8IZP1 , NP_001116862.1
Reactivity	Human
Host	Rabbit
Clonality	Polyclonal
Isotype	Rabbit IgG
Calculated MW	62219
Antigen Region	6-34

TBC1D3H Antibody (N-term) - Additional Information**Gene ID** 729877**Other Names**

TBC1 domain family member 3H, TBC1D3H

Target/Specificity

This TBC1D3H antibody is generated from rabbits immunized with a KLH conjugated synthetic peptide between 6-34 amino acids from the N-terminal region of human TBC1D3H.

Dilution

WB~~1:1000

Format

Purified polyclonal antibody supplied in PBS with 0.09% (W/V) sodium azide. This antibody is purified through a protein A column, followed by peptide affinity purification.

Storage

Maintain refrigerated at 2-8°C for up to 2 weeks. For long term storage store at -20°C in small aliquots to prevent freeze-thaw cycles.

Precautions

TBC1D3H Antibody (N-term) is for research use only and not for use in diagnostic or therapeutic procedures.

TBC1D3H Antibody (N-term) - Protein Information**Name** TBC1D3H

Function Acts as a GTPase activating protein for RAB5. Does not act on RAB4 or RAB11 (By similarity).

Cellular Location

Cell membrane; Lipid-anchor. Note=Associated with lipid rafts.

Tissue Location

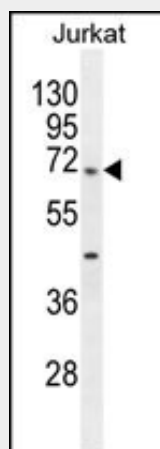
Expressed in heart..

TBC1D3H Antibody (N-term) - Protocols

Provided below are standard protocols that you may find useful for product applications.

- [Western Blot](#)
- [Blocking Peptides](#)
- [Dot Blot](#)
- [Immunohistochemistry](#)
- [Immunofluorescence](#)
- [Immunoprecipitation](#)
- [Flow Cytometry](#)
- [Cell Culture](#)

TBC1D3H Antibody (N-term) - Images



TBC1D3H Antibody (N-term) (Cat. #AP11978a) western blot analysis in Jurkat cell line lysates (35ug/lane). This demonstrates the TBC1D3H antibody detected the TBC1D3H protein (arrow).

TBC1D3H Antibody (N-term) - Background

TBC1D3H acts as a GTPase activating protein for RAB5. It does not act on RAB4 or RAB11 (By similarity).