

**PPP1R3G Antibody (C-term)**  
**Affinity Purified Rabbit Polyclonal Antibody (Pab)**  
**Catalog # AP11993b**

**Specification**

---

**PPP1R3G Antibody (C-term) - Product Information**

Application	WB, FC,E
Primary Accession	<a href="#">B7ZBB8</a>
Other Accession	<a href="#">NP_001138587.1</a>
Reactivity	Human
Host	Rabbit
Clonality	Polyclonal
Isotype	Rabbit IgG
Antigen Region	269-298

**PPP1R3G Antibody (C-term) - Additional Information**

**Gene ID** 648791

**Other Names**

Protein phosphatase 1 regulatory subunit 3G, PPP1R3G

**Target/Specificity**

This PPP1R3G antibody is generated from rabbits immunized with a KLH conjugated synthetic peptide between 269-298 amino acids from the C-terminal region of human PPP1R3G.

**Dilution**

WB~~1:1000

FC~~1:10~50

E~~Use at an assay dependent concentration.

**Format**

Purified polyclonal antibody supplied in PBS with 0.09% (W/V) sodium azide. This antibody is purified through a protein A column, followed by peptide affinity purification.

**Storage**

Maintain refrigerated at 2-8°C for up to 2 weeks. For long term storage store at -20°C in small aliquots to prevent freeze-thaw cycles.

**Precautions**

PPP1R3G Antibody (C-term) is for research use only and not for use in diagnostic or therapeutic procedures.

**PPP1R3G Antibody (C-term) - Protein Information**

**Name** PPP1R3G

**Function** Glycogen-targeting subunit for protein phosphatase 1 (PP1). Involved in the regulation

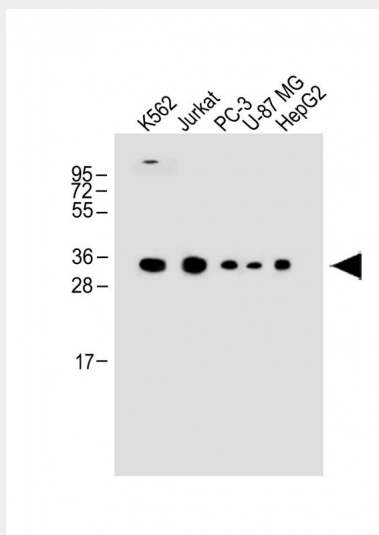
of hepatic glycogenesis in a manner coupled to the fasting-feeding cycle and distinct from other glycogen-targeting subunits (By similarity).

### PPP1R3G Antibody (C-term) - Protocols

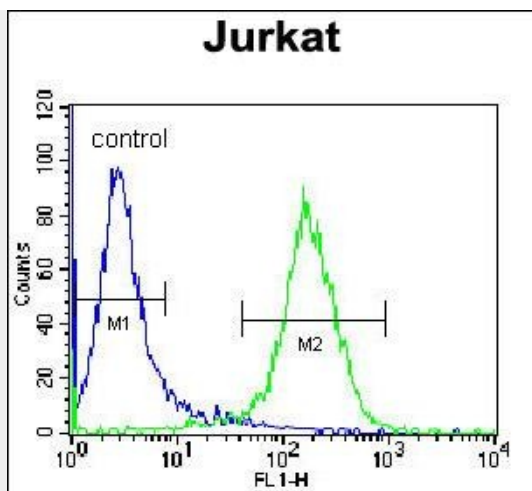
Provided below are standard protocols that you may find useful for product applications.

- [Western Blot](#)
- [Blocking Peptides](#)
- [Dot Blot](#)
- [Immunohistochemistry](#)
- [Immunofluorescence](#)
- [Immunoprecipitation](#)
- [Flow Cytometry](#)
- [Cell Culture](#)

### PPP1R3G Antibody (C-term) - Images



All lanes : Anti-PPP1R3G Antibody (C-term) at 1:1000 dilution Lane 1: K562 whole cell lysate Lane 2: Jurkat whole cell lysate Lane 3: PC-3 whole cell lysate Lane 4: U-87 MG whole cell lysate Lane 5: HepG2 whole cell lysate Lysates/proteins at 20 µg per lane. Secondary Goat Anti-Rabbit IgG, (H+L), Peroxidase conjugated at 1/10000 dilution. Predicted band size : 38 kDa Blocking/Dilution buffer: 5% NFDM/TBST.



PPP1R3G Antibody (C-term) (Cat. #AP11993b) flow cytometric analysis of Jurkat cells (right histogram) compared to a negative control cell (left histogram). FITC-conjugated donkey-anti-rabbit secondary antibodies were used for the analysis.

#### **PPP1R3G Antibody (C-term) - Background**

The function of PPP1R3G remains unknown.

#### **PPP1R3G Antibody (C-term) - References**

Ceulemans, H., et al. Bioessays 24(4):371-381(2002)