

PLA2G2C Antibody (C-term)
Affinity Purified Rabbit Polyclonal Antibody (Pab)
Catalog # AP11996b

Specification

PLA2G2C Antibody (C-term) - Product Information

Application	WB, IHC-P, FC,E
Primary Accession	Q5R387
Other Accession	NP_001099042.1
Reactivity	Human
Host	Rabbit
Clonality	Polyclonal
Isotype	Rabbit IgG
Calculated MW	16844
Antigen Region	113-141

PLA2G2C Antibody (C-term) - Additional Information

Other Names

Putative inactive group IIC secretory phospholipase A2, Phosphatidylcholine 2-acylhydrolase-like protein GLIC, PLA2G2C

Target/Specificity

This PLA2G2C antibody is generated from rabbits immunized with a KLH conjugated synthetic peptide between 113-141 amino acids from the C-terminal region of human PLA2G2C.

Dilution

WB~~1:1000
IHC-P~~1:10~50
FC~~1:10~50

Format

Purified polyclonal antibody supplied in PBS with 0.09% (W/V) sodium azide. This antibody is purified through a protein A column, followed by peptide affinity purification.

Storage

Maintain refrigerated at 2-8°C for up to 2 weeks. For long term storage store at -20°C in small aliquots to prevent freeze-thaw cycles.

Precautions

PLA2G2C Antibody (C-term) is for research use only and not for use in diagnostic or therapeutic procedures.

PLA2G2C Antibody (C-term) - Protein Information

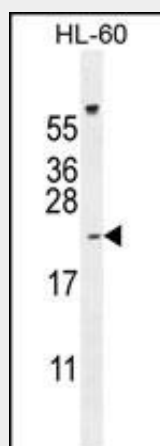
Name PLA2G2C

Function Inactive phospholipase.

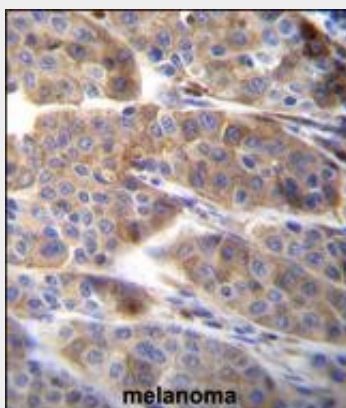
Cellular Location
Secreted.**PLA2G2C Antibody (C-term) - Protocols**

Provided below are standard protocols that you may find useful for product applications.

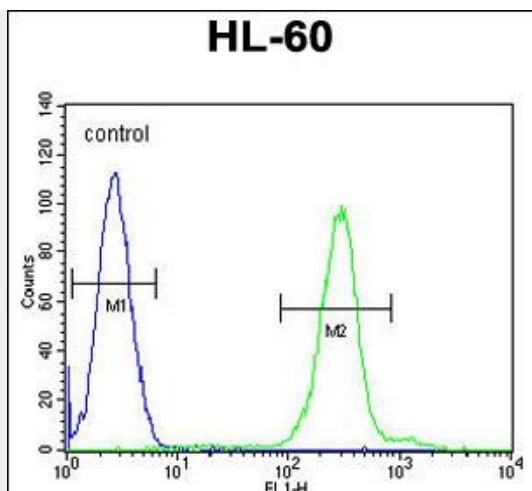
- [Western Blot](#)
- [Blocking Peptides](#)
- [Dot Blot](#)
- [Immunohistochemistry](#)
- [Immunofluorescence](#)
- [Immunoprecipitation](#)
- [Flow Cytometry](#)
- [Cell Culture](#)

PLA2G2C Antibody (C-term) - Images

PLA2G2C Antibody (C-term) (Cat. #AP11996b) western blot analysis in HL-60 cell line lysates (35ug/lane). This demonstrates the PLA2G2C antibody detected the PLA2G2C protein (arrow).



PLA2G2C Antibody (C-term) (Cat. #AP11996b) immunohistochemistry analysis in formalin fixed and paraffin embedded human melanoma followed by peroxidase conjugation of the secondary antibody and DAB staining. This data demonstrates the use of PLA2G2C Antibody (C-term) for immunohistochemistry. Clinical relevance has not been evaluated.



PLA2G2C Antibody (C-term) (Cat. #AP11996b) flow cytometric analysis of HL-60 cells (right histogram) compared to a negative control cell (left histogram). FITC-conjugated goat-anti-rabbit secondary antibodies were used for the analysis.

PLA2G2C Antibody (C-term) - Background

PLA2G2C is a inactive phospholipase (Probable).

PLA2G2C Antibody (C-term) - References

Tischfield, J.A., et al. Genomics 32(3):328-333(1996)