

**FUSSEL18 Antibody (C-term)**  
**Affinity Purified Rabbit Polyclonal Antibody (Pab)**  
**Catalog # AP11997b****Specification**

---

**FUSSEL18 Antibody (C-term) - Product Information**

Application	IHC-P, WB,E
Primary Accession	<a href="#">Q2VWA4</a>
Other Accession	<a href="#">XP_001715271.1</a>
Reactivity	Human
Host	Rabbit
Clonality	Polyclonal
Isotype	Rabbit IgG
Calculated MW	105809
Antigen Region	870-898

**FUSSEL18 Antibody (C-term) - Additional Information****Gene ID** 652991**Other Names**

SKI family transcriptional corepressor 2, Functional Smad-suppressing element on chromosome 18, Fussel-18, LBX1 corepressor 1-like protein, Ladybird homeobox corepressor 1-like protein, SKOR2, CORL2, FUSSEL18

**Target/Specificity**

This FUSSEL18 antibody is generated from rabbits immunized with a KLH conjugated synthetic peptide between 870-898 amino acids from the C-terminal region of human FUSSEL18.

**Dilution**

IHC-P~~1:10~50

WB~~1:1000

E~~Use at an assay dependent concentration.

**Format**

Purified polyclonal antibody supplied in PBS with 0.09% (W/V) sodium azide. This antibody is purified through a protein A column, followed by peptide affinity purification.

**Storage**

Maintain refrigerated at 2-8°C for up to 2 weeks. For long term storage store at -20°C in small aliquots to prevent freeze-thaw cycles.

**Precautions**

FUSSEL18 Antibody (C-term) is for research use only and not for use in diagnostic or therapeutic procedures.

**FUSSEL18 Antibody (C-term) - Protein Information**

**Name** SKOR2 ([HGNC:32695](#))

**Synonyms** CORL2, FUSSEL18

**Function** Exhibits transcriptional repressor activity (By similarity). Acts as a TGF-beta antagonist in the nervous system.

**Cellular Location**

Nucleus. Cytoplasm

**Tissue Location**

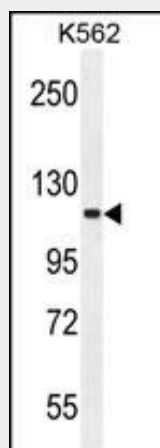
Expressed in cerebellum, spinal cord and testis. Isoform 2 is present in cerebellum (at protein level)

**FUSSEL18 Antibody (C-term) - Protocols**

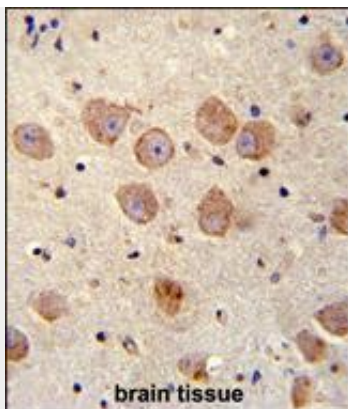
Provided below are standard protocols that you may find useful for product applications.

- [Western Blot](#)
- [Blocking Peptides](#)
- [Dot Blot](#)
- [Immunohistochemistry](#)
- [Immunofluorescence](#)
- [Immunoprecipitation](#)
- [Flow Cytometry](#)
- [Cell Culture](#)

**FUSSEL18 Antibody (C-term) - Images**



FUSSEL18 Antibody (C-term) (Cat. #AP11997b) western blot analysis in K562 cell line lysates (35ug/lane). This demonstrates the FUSSEL18 antibody detected the FUSSEL18 protein (arrow).



FUSSEL18 Antibody (C-term) (Cat. #AP11997b) immunohistochemistry analysis in formalin fixed and paraffin embedded human brain tissue followed by peroxidase conjugation of the secondary antibody and DAB staining. This data demonstrates the use of FUSSEL18 Antibody (C-term) for immunohistochemistry. Clinical relevance has not been evaluated.

#### **FUSSEL18 Antibody (C-term) - Background**

SKOR2 exhibits transcriptional repressor activity (By similarity) and acts as a TGF-beta antagonist in the nervous system.