

**PCDHA5 Antibody (Center)**  
**Affinity Purified Rabbit Polyclonal Antibody (Pab)**  
**Catalog # AP12003C**

**Specification**

---

**PCDHA5 Antibody (Center) - Product Information**

Application	IHC-P, WB,E
Primary Accession	<a href="#">O9Y5H7</a>
Other Accession	<a href="#">NP_113689.1</a>
Reactivity	Human
Host	Rabbit
Clonality	Polyclonal
Isotype	Rabbit IgG
Calculated MW	102048
Antigen Region	287-315

**PCDHA5 Antibody (Center) - Additional Information**

**Gene ID** 56143

**Other Names**

Protocadherin alpha-5, PCDH-alpha-5, PCDHA5, CNRS6

**Target/Specificity**

This PCDHA5 antibody is generated from rabbits immunized with a KLH conjugated synthetic peptide between 287-315 amino acids from the Central region of human PCDHA5.

**Dilution**

IHC-P~~1:10~50

WB~~1:1000

E~~Use at an assay dependent concentration.

**Format**

Purified polyclonal antibody supplied in PBS with 0.09% (W/V) sodium azide. This antibody is purified through a protein A column, followed by peptide affinity purification.

**Storage**

Maintain refrigerated at 2-8°C for up to 2 weeks. For long term storage store at -20°C in small aliquots to prevent freeze-thaw cycles.

**Precautions**

PCDHA5 Antibody (Center) is for research use only and not for use in diagnostic or therapeutic procedures.

**PCDHA5 Antibody (Center) - Protein Information**

**Name** PCDHA5

**Synonyms** CNRS6

**Function** Potential calcium-dependent cell-adhesion protein. May be involved in the establishment and maintenance of specific neuronal connections in the brain.

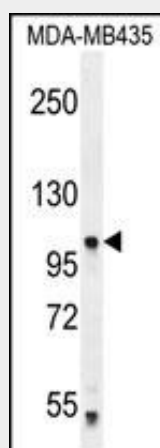
**Cellular Location**

Cell membrane; Single-pass type I membrane protein

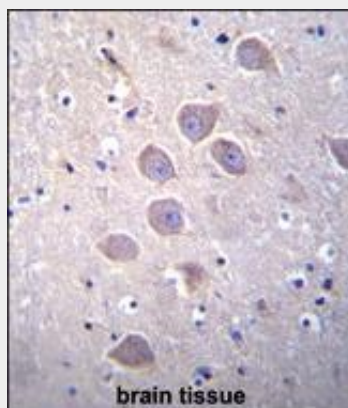
**PCDHA5 Antibody (Center) - Protocols**

Provided below are standard protocols that you may find useful for product applications.

- [Western Blot](#)
- [Blocking Peptides](#)
- [Dot Blot](#)
- [Immunohistochemistry](#)
- [Immunofluorescence](#)
- [Immunoprecipitation](#)
- [Flow Cytometry](#)
- [Cell Culture](#)

**PCDHA5 Antibody (Center) - Images**

PCDHA5 Antibody (Center) (Cat. #AP12003c) western blot analysis in MDA-MB435 cell line lysates (35ug/lane). This demonstrates the PCDHA5 antibody detected the PCDHA5 protein (arrow).



PCDHA5 Antibody (Center) (Cat. #AP12003c) immunohistochemistry analysis in formalin fixed and

paraffin embedded human brain tissue followed by peroxidase conjugation of the secondary antibody and DAB staining. This data demonstrates the use of PCDHA5 Antibody (Center) for immunohistochemistry. Clinical relevance has not been evaluated.

#### **PCDHA5 Antibody (Center) - Background**

This gene is a member of the protocadherin alpha gene cluster, one of three related gene clusters tandemly linked on chromosome five that demonstrate an unusual genomic organization similar to that of B-cell and T-cell receptor gene clusters. The alpha gene cluster is composed of 15 cadherin superfamily genes related to the mouse CNR genes and consists of 13 highly similar and 2 more distantly related coding sequences. The tandem array of 15 N-terminal exons, or variable exons, are followed by downstream C-terminal exons, or constant exons, which are shared by all genes in the cluster. The large, uninterrupted N-terminal exons each encode six cadherin ectodomains while the C-terminal exons encode the cytoplasmic domain. These neural cadherin-like cell adhesion proteins are integral plasma membrane proteins that most likely play a critical role in the establishment and function of specific cell-cell connections in the brain. Alternative splicing has been observed and additional variants have been suggested but their full-length nature has yet to be determined.

#### **PCDHA5 Antibody (Center) - References**

Wu, C., et al. Proteomics 7(11):1775-1785(2007)  
Wu, Q., et al. Genome Res. 11(3):389-404(2001)  
Nollet, F., et al. J. Mol. Biol. 299(3):551-572(2000)  
Yagi, T., et al. Genes Dev. 14(10):1169-1180(2000)  
Wu, Q., et al. Proc. Natl. Acad. Sci. U.S.A. 97(7):3124-3129(2000)