

IQCA1 Antibody (C-term)
Affinity Purified Rabbit Polyclonal Antibody (Pab)
Catalog # AP12008B**Specification**

IQCA1 Antibody (C-term) - Product Information

Application	WB, IHC-P,E
Primary Accession	Q86XH1
Other Accession	NP_079002.3
Reactivity	Human
Host	Rabbit
Clonality	Polyclonal
Isotype	Rabbit IgG
Calculated MW	95341
Antigen Region	794-822

IQCA1 Antibody (C-term) - Additional Information**Gene ID** 79781**Other Names**

IQ and AAA domain-containing protein 1, IQCA1, IQCA

Target/Specificity

This IQCA1 antibody is generated from rabbits immunized with a KLH conjugated synthetic peptide between 794-822 amino acids from the C-terminal region of human IQCA1.

Dilution

WB~~1:1000

IHC-P~~1:10~50

Format

Purified polyclonal antibody supplied in PBS with 0.09% (W/V) sodium azide. This antibody is purified through a protein A column, followed by peptide affinity purification.

Storage

Maintain refrigerated at 2-8°C for up to 2 weeks. For long term storage store at -20°C in small aliquots to prevent freeze-thaw cycles.

Precautions

IQCA1 Antibody (C-term) is for research use only and not for use in diagnostic or therapeutic procedures.

IQCA1 Antibody (C-term) - Protein Information**Name** IQCA1**Synonyms** DRC11 {ECO:0000250|UniProtKB:A8IHT2}, IQ

Function Component of the nexin-dynein regulatory complex (N-DRC), a key regulator of ciliary/flagellar motility which maintains the alignment and integrity of the distal axoneme and regulates microtubule sliding in motile axonemes.

Cellular Location

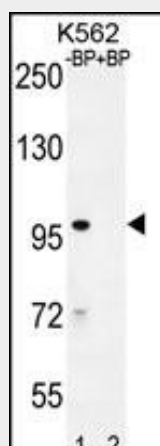
Cytoplasm, cytoskeleton, flagellum axoneme {ECO:0000250|UniProtKB:A8IHT2}

IQCA1 Antibody (C-term) - Protocols

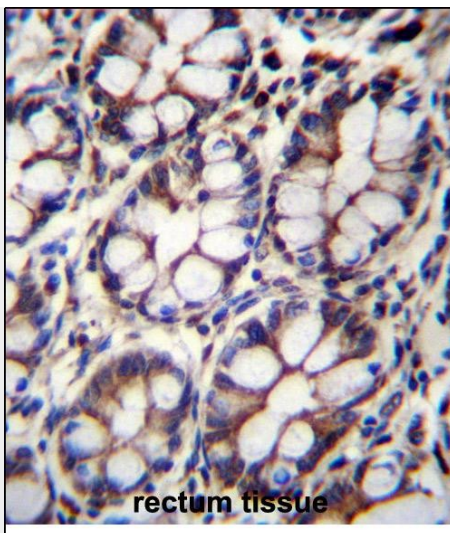
Provided below are standard protocols that you may find useful for product applications.

- [Western Blot](#)
- [Blocking Peptides](#)
- [Dot Blot](#)
- [Immunohistochemistry](#)
- [Immunofluorescence](#)
- [Immunoprecipitation](#)
- [Flow Cytometry](#)
- [Cell Culture](#)

IQCA1 Antibody (C-term) - Images



Western blot analysis of IQCA1 Antibody (C-term) Pab (Cat. #AP12008b) pre-incubated without (lane 1) and with (lane 2) blocking peptide in K562 cell line lysate. IQCA1 Antibody (C-term) (arrow) was detected using the purified Pab.



IQCA1 Antibody (C-term) (Cat. #AP12008b) immunohistochemistry analysis in formalin fixed and paraffin embedded human rectum tissue followed by peroxidase conjugation of the secondary antibody and DAB staining. This data demonstrates the use of IQCA1 Antibody (C-term) for immunohistochemistry. Clinical relevance has not been evaluated.

IQCA1 Antibody (C-term) - References

Barber, M.J., et al. PLoS ONE 5 (3), E9763 (2010) :
Hillier, L.W., et al. Nature 434(7034):724-731(2005)