

**RAB40AL Antibody (N-term)**  
**Affinity Purified Rabbit Polyclonal Antibody (Pab)**  
**Catalog # AP12011a****Specification**

---

**RAB40AL Antibody (N-term) - Product Information**

Application	WB, IHC-P,E
Primary Accession	<a href="#">P0C0E4</a>
Other Accession	<a href="#">Q8WXH6</a> , <a href="#">NP_001027004.1</a>
Reactivity	Human
Host	Rabbit
Clonality	Polyclonal
Isotype	Rabbit IgG
Calculated MW	31239
Antigen Region	7-36

**RAB40AL Antibody (N-term) - Additional Information****Gene ID** 282808**Other Names**

Ras-related protein Rab-40A-like, Ras-like GTPase, RAB40AL, RLGP

**Target/Specificity**

This RAB40AL antibody is generated from rabbits immunized with a KLH conjugated synthetic peptide between 7-36 amino acids from the N-terminal region of human RAB40AL.

**Dilution**

WB~~1:1000

IHC-P~~1:10~50

**Format**

Purified polyclonal antibody supplied in PBS with 0.09% (W/V) sodium azide. This antibody is purified through a protein A column, followed by peptide affinity purification.

**Storage**

Maintain refrigerated at 2-8°C for up to 2 weeks. For long term storage store at -20°C in small aliquots to prevent freeze-thaw cycles.

**Precautions**

RAB40AL Antibody (N-term) is for research use only and not for use in diagnostic or therapeutic procedures.

**RAB40AL Antibody (N-term) - Protein Information****Name** RAB40AL**Synonyms** RLGP

**Function** May be a substrate-recognition component of a SCF-like ECS (Elongin-Cullin-SOCS-box protein) E3 ubiquitin ligase complex which mediates the ubiquitination and subsequent proteasomal degradation of target proteins.

**Cellular Location**

Membrane; Lipid-anchor; Cytoplasmic side. Cytoplasm. Mitochondrion

**Tissue Location**

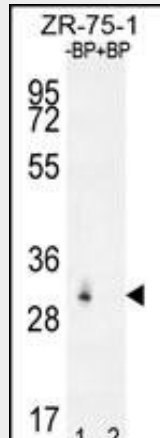
Expressed in brain, lung, heart, skeletal muscle, kidney and liver. Highest expression in brain. Expressed in fetal brain and kidney.

**RAB40AL Antibody (N-term) - Protocols**

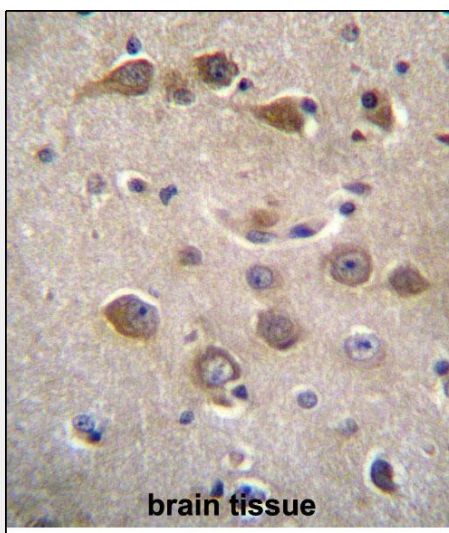
Provided below are standard protocols that you may find useful for product applications.

- [Western Blot](#)
- [Blocking Peptides](#)
- [Dot Blot](#)
- [Immunohistochemistry](#)
- [Immunofluorescence](#)
- [Immunoprecipitation](#)
- [Flow Cytometry](#)
- [Cell Culture](#)

**RAB40AL Antibody (N-term) - Images**



Western blot analysis of RAB40AL Antibody (N-term) Pab (Cat. #AP12011a) pre-incubated without (lane 1) and with (lane 2) blocking peptide in ZR-75-1 cell line lysate. RAB40AL Antibody (N-term) (arrow) was detected using the purified Pab.



RAB40AL Antibdy (N-term) (Cat. #AP12011a) immunohistochemistry analysis in formalin fixed and paraffin embedded human brain tissue followed by peroxidase conjugation of the secondary antibody and DAB staining. This data demonstrates the use of RAB40AL Antibdy (N-term) for immunohistochemistry. Clinical relevance has not been evaluated.

#### **RAB40AL Antibody (N-term) - Background**

This gene encodes a member of the Rab40 subfamily of Rab small GTP-binding proteins that contains a C-terminal suppressors of cytokine signaling box. Disruptions in this gene are associated with Duchenne muscular dystrophy.

#### **RAB40AL Antibody (N-term) - References**

Saito-Ohara, F., et al. Am. J. Hum. Genet. 71(3):637-645(2002) Kile, B.T., et al. Trends Biochem. Sci. 27(5):235-241(2002)