

OR1D5 Antibody (C-term)
Affinity Purified Rabbit Polyclonal Antibody (Pab)
Catalog # AP12013b**Specification**

OR1D5 Antibody (C-term) - Product Information

Application	WB,E
Primary Accession	P58170
Other Accession	P47884 , NP_055381.1
Reactivity	Human
Host	Rabbit
Clonality	Polyclonal
Isotype	Rabbit IgG
Calculated MW	35424
Antigen Region	244-271

OR1D5 Antibody (C-term) - Additional Information**Gene ID** 8386**Other Names**

Olfactory receptor 1D5, Olfactory receptor 17-31, OR17-31, OR1D5

Target/Specificity

This OR1D5 antibody is generated from rabbits immunized with a KLH conjugated synthetic peptide between 244-271 amino acids from the C-terminal region of human OR1D5.

Dilution

WB~~1:1000

Format

Purified polyclonal antibody supplied in PBS with 0.09% (W/V) sodium azide. This antibody is purified through a protein A column, followed by peptide affinity purification.

Storage

Maintain refrigerated at 2-8°C for up to 2 weeks. For long term storage store at -20°C in small aliquots to prevent freeze-thaw cycles.

Precautions

OR1D5 Antibody (C-term) is for research use only and not for use in diagnostic or therapeutic procedures.

OR1D5 Antibody (C-term) - Protein Information**Name** OR1D5**Function** Odorant receptor.

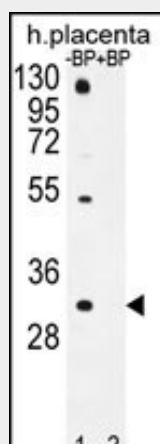
Cellular Location

Cell membrane; Multi-pass membrane protein.

OR1D5 Antibody (C-term) - Protocols

Provided below are standard protocols that you may find useful for product applications.

- [Western Blot](#)
- [Blocking Peptides](#)
- [Dot Blot](#)
- [Immunohistochemistry](#)
- [Immunofluorescence](#)
- [Immunoprecipitation](#)
- [Flow Cytometry](#)
- [Cell Culture](#)

OR1D5 Antibody (C-term) - Images

Western blot analysis of OR1D5 Antibody (C-term) Pab (Cat. #AP12013b) pre-incubated without (lane 1) and with (lane 2) blocking peptide in human placenta tissue lysate. OR1D5 Antibody (C-term) (arrow) was detected using the purified Pab.

OR1D5 Antibody (C-term) - Background

Olfactory receptors interact with odorant molecules in the nose, to initiate a neuronal response that triggers the perception of a smell. The olfactory receptor proteins are members of a large family of G-protein-coupled receptors (GPCR) arising from single coding-exon genes. Olfactory receptors share a 7-transmembrane domain structure with many neurotransmitter and hormone receptors and are responsible for the recognition and G protein-mediated transduction of odorant signals. The olfactory receptor gene family is the largest in the genome. The nomenclature assigned to the olfactory receptor genes and proteins for this organism is independent of other organisms.

OR1D5 Antibody (C-term) - References

Malnic, B., et al. Proc. Natl. Acad. Sci. U.S.A. 101(8):2584-2589(2004)
Fuchs, T., et al. Genomics 80(3):295-302(2002)

Glusman, G., et al. Genomics 63(2):227-245(2000)

Selbie, L.A., et al. Brain Res. Mol. Brain Res. 13 (1-2), 159-163 (1992) :