

PDE3B Antibody (Center)
Affinity Purified Rabbit Polyclonal Antibody (Pab)
Catalog # AP12018c

Specification

PDE3B Antibody (Center) - Product Information

Application	FC, IF, WB,E
Primary Accession	Q13370
Other Accession	NP_000913.2
Reactivity	Human
Host	Rabbit
Clonality	Polyclonal
Isotype	Rabbit IgG
Calculated MW	124333
Antigen Region	400-427

PDE3B Antibody (Center) - Additional Information

Gene ID 5140

Other Names

cGMP-inhibited 3', 5'-cyclic phosphodiesterase B, CGIPDE1, CGIP1, Cyclic GMP-inhibited phosphodiesterase B, CGI-PDE B, PDE3B

Target/Specificity

This PDE3B antibody is generated from rabbits immunized with a KLH conjugated synthetic peptide between 400-427 amino acids from the Central region of human PDE3B.

Dilution

FC~~1:10~50

IF~~1:10~50

WB~~1:1000

E~~Use at an assay dependent concentration.

Format

Purified polyclonal antibody supplied in PBS with 0.09% (W/V) sodium azide. This antibody is purified through a protein A column, followed by peptide affinity purification.

Storage

Maintain refrigerated at 2-8°C for up to 2 weeks. For long term storage store at -20°C in small aliquots to prevent freeze-thaw cycles.

Precautions

PDE3B Antibody (Center) is for research use only and not for use in diagnostic or therapeutic procedures.

PDE3B Antibody (Center) - Protein Information

Name PDE3B ([HGNC:8779](#))

Function Cyclic nucleotide phosphodiesterase with a dual-specificity for the second messengers cAMP and cGMP, which are key regulators of many important physiological process (PubMed:[14592490](#), PubMed:[21393242](#)). Regulates angiogenesis by inhibiting the cAMP-dependent guanine nucleotide exchange factor RAPGEF3 and downstream phosphatidylinositol 3-kinase gamma-mediated signaling (PubMed:[21393242](#)). Controls cardiac contractility by reducing cAMP concentration in cardiocytes (By similarity).

Cellular Location

Membrane {ECO:0000250|UniProtKB:Q61409}; Multi- pass membrane protein

Tissue Location

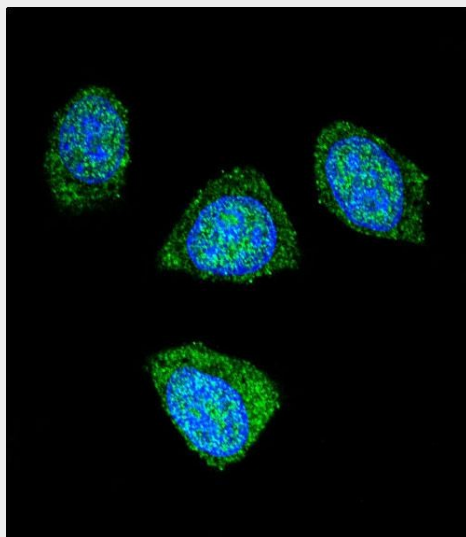
Abundant in adipose tissues.

PDE3B Antibody (Center) - Protocols

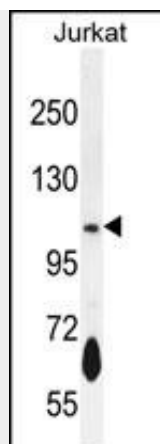
Provided below are standard protocols that you may find useful for product applications.

- [Western Blot](#)
- [Blocking Peptides](#)
- [Dot Blot](#)
- [Immunohistochemistry](#)
- [Immunofluorescence](#)
- [Immunoprecipitation](#)
- [Flow Cytometry](#)
- [Cell Culture](#)

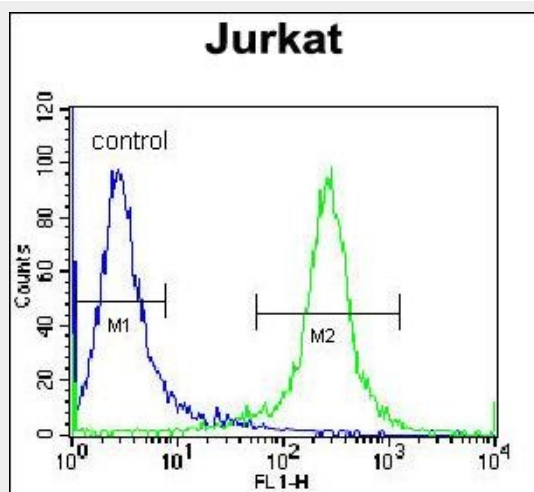
PDE3B Antibody (Center) - Images



Confocal immunofluorescent analysis of PDE3B Antibody (Center) (Cat#AP12018c) with 293 cell followed by Alexa Fluor 488-conjugated goat anti-rabbit IgG (green). DAPI was used to stain the cell nuclear (blue).



PDE3B Antibody (Center) (Cat. #AP12018c) western blot analysis in Jurkat cell line lysates (35ug/lane). This demonstrates the PDE3B antibody detected the PDE3B protein (arrow).



PDE3B Antibody (Center) (Cat. #AP12018c) flow cytometric analysis of Jurkat cells (right histogram) compared to a negative control cell (left histogram). FITC-conjugated donkey-anti-rabbit secondary antibodies were used for the analysis.

PDE3B Antibody (Center) - Background

Cyclic nucleotide phosphodiesterase with a dual-specificity for the second messengers cAMP and cGMP, which are key regulators of many important physiological processes; PDE3B may play a role in fat metabolism.

PDE3B Antibody (Center) - References

- Bailey, S.D., et al. Diabetes Care 33(10):2250-2253(2010)
- Yamano, Y., et al. Int. J. Cancer 126(2):437-449(2010)
- Talmud, P.J., et al. Am. J. Hum. Genet. 85(5):628-642(2009)
- Hanson, M.S., et al. Am. J. Physiol. Heart Circ. Physiol. 295 (2), H786-H793 (2008) :
- Raymond, D.R., et al. Cell. Signal. 19(12):2507-2518(2007)