

CPB1 Antibody (N-term)
Affinity Purified Rabbit Polyclonal Antibody (Pab)
Catalog # AP12023a

Specification

CPB1 Antibody (N-term) - Product Information

Application	WB, IHC-P, IF, FC,E
Primary Accession	P15086
Other Accession	NP_001862.2
Reactivity	Human
Host	Rabbit
Clonality	Polyclonal
Isotype	Rabbit IgG
Antigen Region	9-37

CPB1 Antibody (N-term) - Additional Information

Gene ID 1360

Other Names

Carboxypeptidase B, Pancreas-specific protein, PASP, CPB1, CPB, PCPB

Target/Specificity

This CPB1 antibody is generated from rabbits immunized with a KLH conjugated synthetic peptide between 9-37 amino acids from the N-terminal region of human CPB1.

Dilution

WB~~1:1000
IHC-P~~1:10~50
IF~~1:10~50
FC~~1:10~50
E~~Use at an assay dependent concentration.

Format

Purified polyclonal antibody supplied in PBS with 0.09% (W/V) sodium azide. This antibody is purified through a protein A column, followed by peptide affinity purification.

Storage

Maintain refrigerated at 2-8°C for up to 2 weeks. For long term storage store at -20°C in small aliquots to prevent freeze-thaw cycles.

Precautions

CPB1 Antibody (N-term) is for research use only and not for use in diagnostic or therapeutic procedures.

CPB1 Antibody (N-term) - Protein Information

Name CPB1

Synonyms CPB, PCPB

Cellular Location

Secreted {ECO:0000250|UniProtKB:P00732}. Zymogen granule lumen
{ECO:0000250|UniProtKB:P55261}

Tissue Location

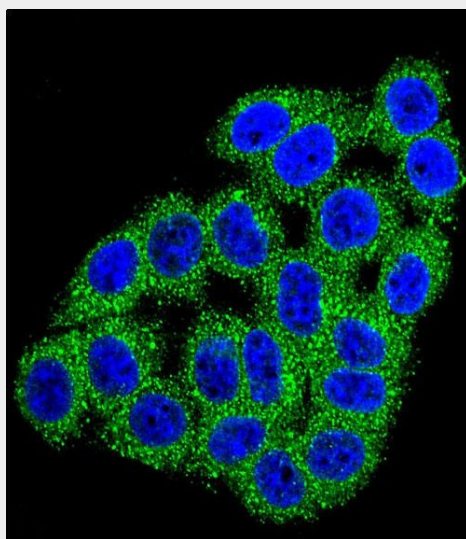
Pancreas..

CPB1 Antibody (N-term) - Protocols

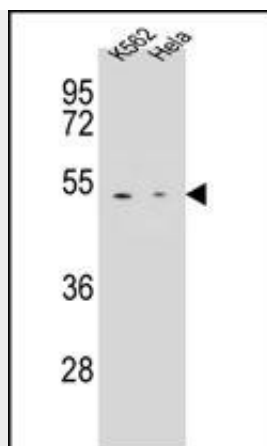
Provided below are standard protocols that you may find useful for product applications.

- [Western Blot](#)
- [Blocking Peptides](#)
- [Dot Blot](#)
- [Immunohistochemistry](#)
- [Immunofluorescence](#)
- [Immunoprecipitation](#)
- [Flow Cytometry](#)
- [Cell Culture](#)

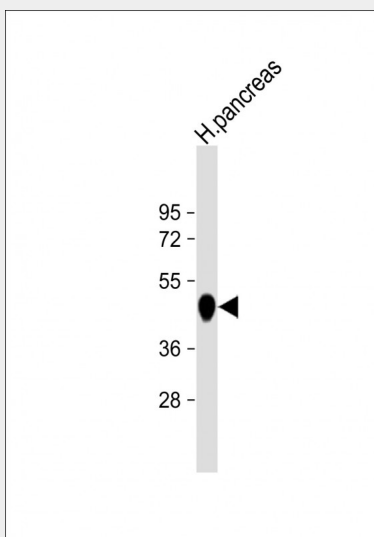
CPB1 Antibody (N-term) - Images



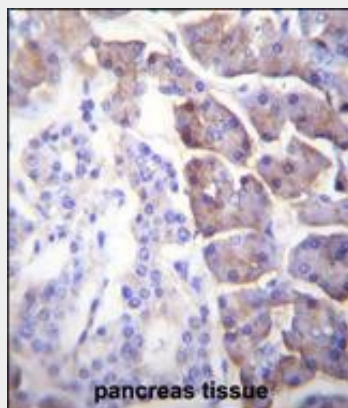
Confocal immunofluorescent analysis of CPB1 Antibody (N-term)(Cat#AP12023a) with HeLa cell followed by Alexa Fluor 488-conjugated goat anti-rabbit IgG (green). DAPI was used to stain the cell nuclear (blue).



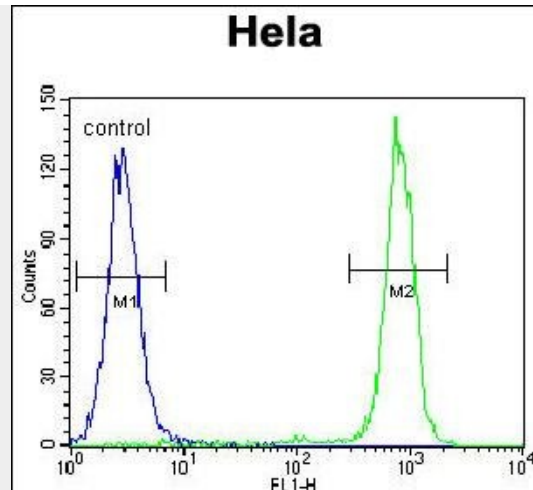
CPB1 Antibody (N-term) (Cat. #AP12023a) western blot analysis in K562, HeLa cell line lysates (35ug/lane). This demonstrates the CPB1 antibody detected the CPB1 protein (arrow).



Anti-CPB1 Antibody (N-term) at 1:1000 dilution + human pancreas lysate. Lysates/proteins at 20 µg per lane. Secondary Goat Anti-Rabbit IgG, (H+L), Peroxidase conjugated at 1/10000 dilution. Predicted band size : 47 kDa. Blocking/Dilution buffer: 5% NFDM/TBST.



CPB1 Antibody (N-term) (Cat. #AP12023a) immunohistochemistry analysis in formalin fixed and paraffin embedded human pancreas tissue followed by peroxidase conjugation of the secondary antibody and DAB staining. This data demonstrates the use of CPB1 Antibody (N-term) for immunohistochemistry. Clinical relevance has not been evaluated.



CPB1 Antibody (N-term) (Cat. #AP12023a) flow cytometric analysis of Hela cells (right histogram) compared to a negative control cell (left histogram). FITC-conjugated goat-anti-rabbit secondary antibodies were used for the analysis.

CPB1 Antibody (N-term) - Background

Three different procarboxypeptidases A and two different procarboxypeptidases B have been isolated. The B1 and B2 forms differ from each other mainly in isoelectric point. Carboxypeptidase B1 is a highly tissue-specific protein and is a useful serum marker for acute pancreatitis and dysfunction of pancreatic transplants. It is not elevated in pancreatic carcinoma.

CPB1 Antibody (N-term) - References

Rose, J. Phd, et al. Mol. Med. (2010) In press :
Pantoja-Uceda, D., et al. Biochemistry 47(27):7066-7078(2008)
Guimaraes, A.H., et al. Arterioscler. Thromb. Vasc. Biol. 27(10):2157-2162(2007)
Barbosa Pereira, P.J., et al. J. Mol. Biol. 321(3):537-547(2002)
Aloy, P., et al. Biol. Chem. 379(2):149-155(1998)