

TBCA Antibody (Center)
Affinity Purified Rabbit Polyclonal Antibody (Pab)
Catalog # AP12024C**Specification**

TBCA Antibody (Center) - Product Information

Application	IHC-P, WB,E
Primary Accession	O75347
Other Accession	NP_004598.1
Reactivity	Human, Mouse
Host	Rabbit
Clonality	Polyclonal
Isotype	Rabbit IgG
Calculated MW	12855
Antigen Region	30-58

TBCA Antibody (Center) - Additional Information**Gene ID** 6902**Other Names**

Tubulin-specific chaperone A, TCP1-chaperonin cofactor A, Tubulin-folding cofactor A, CFA, TBCA

Target/Specificity

This TBCA antibody is generated from rabbits immunized with a KLH conjugated synthetic peptide between 30-58 amino acids from the Central region of human TBCA.

Dilution

IHC-P~~1:10~50

WB~~1:1000

E~~Use at an assay dependent concentration.

Format

Purified polyclonal antibody supplied in PBS with 0.09% (W/V) sodium azide. This antibody is purified through a protein A column, followed by peptide affinity purification.

Storage

Maintain refrigerated at 2-8°C for up to 2 weeks. For long term storage store at -20°C in small aliquots to prevent freeze-thaw cycles.

Precautions

TBCA Antibody (Center) is for research use only and not for use in diagnostic or therapeutic procedures.

TBCA Antibody (Center) - Protein Information**Name** TBCA

Function Tubulin-folding protein; involved in the early step of the tubulin folding pathway.

Cellular Location

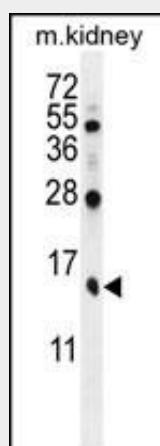
Cytoplasm, cytoskeleton.

TBCA Antibody (Center) - Protocols

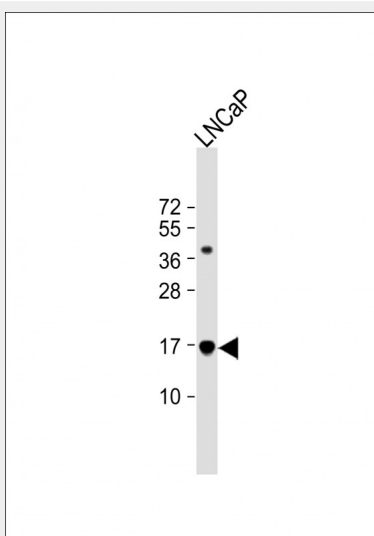
Provided below are standard protocols that you may find useful for product applications.

- [Western Blot](#)
- [Blocking Peptides](#)
- [Dot Blot](#)
- [Immunohistochemistry](#)
- [Immunofluorescence](#)
- [Immunoprecipitation](#)
- [Flow Cytometry](#)
- [Cell Culture](#)

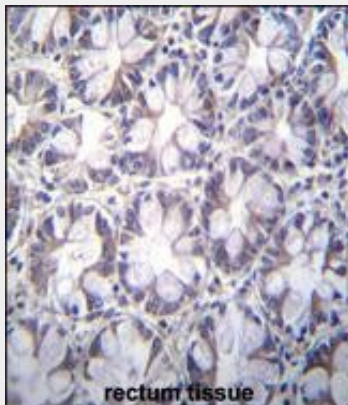
TBCA Antibody (Center) - Images



TBCA Antibody (Center) (Cat. #AP12024c) western blot analysis in mouse kidney tissue lysates (35ug/lane). This demonstrates the TBCA antibody detected the TBCA protein (arrow).



Anti-TBCA Antibody (Center) at 1:1000 dilution + LNCaP whole cell lysate Lysates/proteins at 20 µg per lane. Secondary Goat Anti-Rabbit IgG, (H+L), Peroxidase conjugated at 1/10000 dilution. Predicted band size : 13 kDa Blocking/Dilution buffer: 5% NFDM/TBST.



TBCA Antibody (Center) (Cat. #AP12024c) immunohistochemistry analysis in formalin fixed and paraffin embedded human rectum tissue followed by peroxidase conjugation of the secondary antibody and DAB staining. This data demonstrates the use of TBCA Antibody (Center) for immunohistochemistry. Clinical relevance has not been evaluated.

TBCA Antibody (Center) - Background

The product of this gene is one of four proteins (cofactors A, D, E, and C) involved in the pathway leading to correctly folded beta-tubulin from folding intermediates. Cofactors A and D are believed to play a role in capturing and stabilizing beta-tubulin intermediates in a quasi-native conformation. Cofactor E binds to the cofactor D/beta-tubulin complex; interaction with cofactor C then causes the release of beta-tubulin polypeptides that are committed to the native state. This gene encodes chaperonin cofactor A.

TBCA Antibody (Center) - References

Rose, J.E., et al. Mol. Med. 16 (7-8), 247-253 (2010) :
Joslyn, G., et al. Alcohol. Clin. Exp. Res. 34(5):800-812(2010)
Bruneel, A., et al. Proteomics 5(15):3876-3884(2005)
Nolasco, S., et al. FEBS Lett. 579(17):3515-3524(2005)
Guasch, A., et al. J. Mol. Biol. 318(4):1139-1149(2002)