

**RDH13 Antibody (Center)**  
**Affinity Purified Rabbit Polyclonal Antibody (Pab)**  
**Catalog # AP12029C****Specification**

---

**RDH13 Antibody (Center) - Product Information**

Application	WB, FC,E
Primary Accession	<a href="#">Q8NBN7</a>
Other Accession	<a href="#">NP_612421.1</a>
Reactivity	Human
Host	Rabbit
Clonality	Polyclonal
Isotype	Rabbit IgG
Calculated MW	35932
Antigen Region	166-194

**RDH13 Antibody (Center) - Additional Information****Gene ID** 112724**Other Names**

Retinol dehydrogenase 13, 111-, RDH13

**Target/Specificity**

This RDH13 antibody is generated from rabbits immunized with a KLH conjugated synthetic peptide between 166-194 amino acids from the Central region of human RDH13.

**Dilution**

WB~~1:1000

FC~~1:10~50

**Format**

Purified polyclonal antibody supplied in PBS with 0.09% (W/V) sodium azide. This antibody is purified through a protein A column, followed by peptide affinity purification.

**Storage**

Maintain refrigerated at 2-8°C for up to 2 weeks. For long term storage store at -20°C in small aliquots to prevent freeze-thaw cycles.

**Precautions**

RDH13 Antibody (Center) is for research use only and not for use in diagnostic or therapeutic procedures.

**RDH13 Antibody (Center) - Protein Information****Name** RDH13**Synonyms** SDR7C3

**Function** Retinol dehydrogenase with a clear preference for NADP. Oxidizes all-trans-retinol, but seems to reduce all-trans-retinal with much higher efficiency (PubMed:[18039331](#)). Has no activity toward steroids (PubMed:[18039331](#)).

**Cellular Location**

Mitochondrion inner membrane; Peripheral membrane protein. Note=Localized on the outer side of the inner mitochondrial membrane.

**Tissue Location**

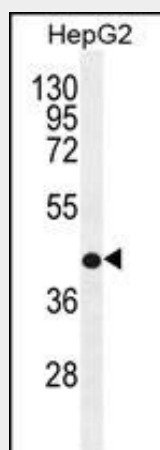
Widely expressed (PubMed:18039331). In the retina, detected in the inner segment of the photoreceptor cells. Weak signals are observed in a small population of inner nuclear neurons and the inner plexiform layer (PubMed:12226107).

**RDH13 Antibody (Center) - Protocols**

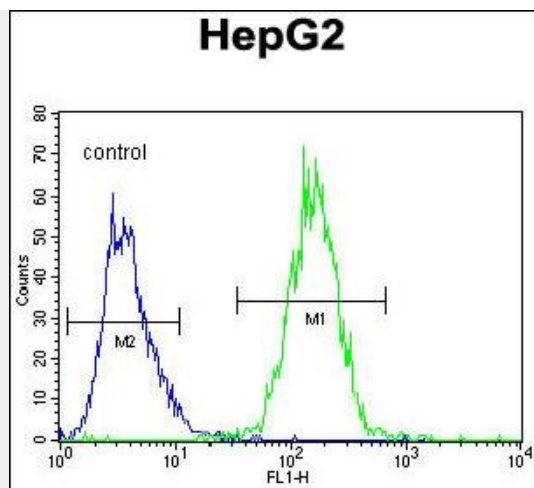
Provided below are standard protocols that you may find useful for product applications.

- [Western Blot](#)
- [Blocking Peptides](#)
- [Dot Blot](#)
- [Immunohistochemistry](#)
- [Immunofluorescence](#)
- [Immunoprecipitation](#)
- [Flow Cytometry](#)
- [Cell Culture](#)

**RDH13 Antibody (Center) - Images**



RDH13 Antibody (Center) (Cat. #AP12029c) western blot analysis in HepG2 cell line lysates (35ug/lane). This demonstrates the RDH13 antibody detected the RDH13 protein (arrow).



RDH13 Antibody (Center) (Cat. #AP12029c) flow cytometric analysis of HepG2 cells (right histogram) compared to a negative control cell (left histogram). FITC-conjugated goat-anti-rabbit secondary antibodies were used for the analysis.

#### **RDH13 Antibody (Center) - Background**

This gene encodes a mitochondrial short-chain dehydrogenase/reductase, which catalyzes the reduction and oxidation of retinoids. The encoded enzyme may function in retinoic acid production and may also protect the mitochondria against oxidative stress. Alternatively spliced transcript variants have been described.

#### **RDH13 Antibody (Center) - References**

Persson, B., et al. Chem. Biol. Interact. 178 (1-3), 94-98 (2009) :  
Belyaeva, O.V., et al. FEBS J. 275(1):138-147(2008)  
Haeseleer, F., et al. J. Biol. Chem. 277(47):45537-45546(2002)