

**PRDM2 (RIZ1) Antibody**  
**Purified Rabbit Polyclonal Antibody (Pab)**  
**Catalog # AP1202B****Specification**

---

**PRDM2 (RIZ1) Antibody - Product Information**

Application	IHC-P, IP,E
Primary Accession	<a href="#">Q63755</a>
Reactivity	Rat
Host	Rabbit
Clonality	Polyclonal
Isotype	Rabbit IgG
Antigen Region	245-573

**PRDM2 (RIZ1) Antibody - Additional Information****Gene ID** 313678**Other Names**

PR domain zinc finger protein 2, GATA-3-binding protein G3B, Lysine N-methyltransferase 8, MTB-ZF, MTE-binding protein, PR domain-containing protein 2, Retinoblastoma protein-interacting zinc finger protein, Zinc finger protein RIZ, PRDM2, KMT8, RIZ

**Target/Specificity**

Purified recombinant GST fusion protein encoding aa 245-573 of rat PRDM2.

**Dilution**

IHC-P~~1:100~500

IP~~N/A

E~~Use at an assay dependent concentration.

**Format**

Purified polyclonal antibody supplied in PBS with 0.09% (W/V) sodium azide. This antibody is purified through a protein A column, followed by peptide affinity purification.

**Storage**

Maintain refrigerated at 2-8°C for up to 2 weeks. For long term storage store at -20°C in small aliquots to prevent freeze-thaw cycles.

**Precautions**

PRDM2 (RIZ1) Antibody is for research use only and not for use in diagnostic or therapeutic procedures.

**PRDM2 (RIZ1) Antibody - Protein Information****Name** Prdm2**Synonyms** Riz

**Function** S-adenosyl-L-methionine-dependent histone methyltransferase that specifically methylates 'Lys-9' of histone H3. May function as a DNA-binding transcription factor. Binds to the macrophage-specific TPA- responsive element (MTE) of the HMOX1 (heme oxygenase 1) gene and may act as a transcriptional activator of this gene (By similarity).

#### Cellular Location

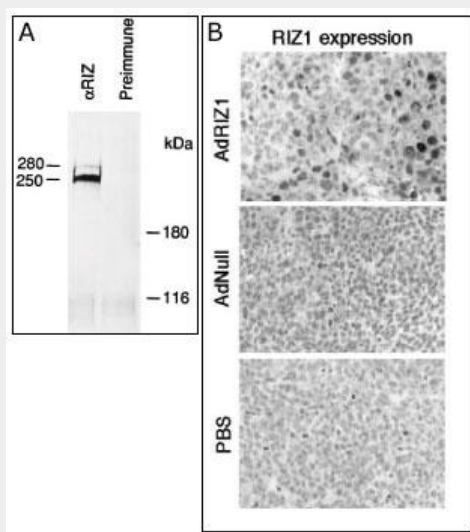
Nucleus.

### PRDM2 (RIZ1) Antibody - Protocols

Provided below are standard protocols that you may find useful for product applications.

- [Western Blot](#)
- [Blocking Peptides](#)
- [Dot Blot](#)
- [Immunohistochemistry](#)
- [Immunofluorescence](#)
- [Immunoprecipitation](#)
- [Flow Cytometry](#)
- [Cell Culture](#)

### PRDM2 (RIZ1) Antibody - Images



A) Rat B50 brain tumor cell extracts were immunoprecipitated with RIZ1 antibody (cat# AP1202b) or preimmune (ref.9). B) Immunohistochemical analysis of RIZ1 in adenovirus-transduced tumor cells. Established HCT116 xenograft tumors at day 2 after infection of AdRIZ1, Adnull, or buffer alone were processed for RIZ1 in situ detection (TUNEL) analysis (ref.10).

### PRDM2 (RIZ1) Antibody - Background

PRDM2 is a 250-kD nuclear protein containing 8 zinc finger motifs. It contains an RB-binding motif that is related to that of the adenovirus E1A oncoprotein; RIZ also shares an antigenic epitope with the C terminus of E1A. It is expressed in human retinoblastoma cells and at low levels in all other human cell lines examined. Using fluorescence in situ hybridization, the PRDM2 gene has been mapped to 1p36. PRDM2 may be a candidate target of 1p36 alterations that commonly occur in neuroendocrine, breast, liver, colon, skin, and lymphoid tumors.

**PRDM2 (RIZ1) Antibody - References**

Muraosa, Y., et al., Eur. J. Biochem. 235(3):471-479 (1996). Buyse, I.M., et al., Proc. Natl. Acad. Sci. U.S.A. 92(10):4467-4471 (1995).