

**FOXA2 Antibody (C-term)**  
**Affinity Purified Rabbit Polyclonal Antibody (Pab)**  
**Catalog # AP12031b**

**Specification**

---

**FOXA2 Antibody (C-term) - Product Information**

Application	WB, IF, IHC-P,E
Primary Accession	<a href="#">O9Y261</a>
Other Accession	<a href="#">P35583</a> , <a href="#">NP_068556.2</a>
Reactivity	Human, Rat
Predicted	Mouse
Host	Rabbit
Clonality	Polyclonal
Isotype	Rabbit IgG
Calculated MW	48306
Antigen Region	380-407

**FOXA2 Antibody (C-term) - Additional Information**

**Gene ID** 3170

**Other Names**

Hepatocyte nuclear factor 3-beta, HNF-3-beta, HNF-3B, Forkhead box protein A2, Transcription factor 3B, TCF-3B, FOXA2, HNF3B, TCF3B

**Target/Specificity**

This FOXA2 antibody is generated from rabbits immunized with a KLH conjugated synthetic peptide between 380-407 amino acids from the C-terminal region of human FOXA2.

**Dilution**

WB~~1:1000

IF~~1:10~50

IHC-P~~1:10~50

E~~Use at an assay dependent concentration.

**Format**

Purified polyclonal antibody supplied in PBS with 0.09% (W/V) sodium azide. This antibody is purified through a protein A column, followed by peptide affinity purification.

**Storage**

Maintain refrigerated at 2-8°C for up to 2 weeks. For long term storage store at -20°C in small aliquots to prevent freeze-thaw cycles.

**Precautions**

FOXA2 Antibody (C-term) is for research use only and not for use in diagnostic or therapeutic procedures.

**FOXA2 Antibody (C-term) - Protein Information**

**Name** FOXA2

**Synonyms** HNF3B, TCF3B

**Function** Transcription factor that is involved in embryonic development, establishment of tissue-specific gene expression and regulation of gene expression in differentiated tissues. Is thought to act as a 'pioneer' factor opening the compacted chromatin for other proteins through interactions with nucleosomal core histones and thereby replacing linker histones at target enhancer and/or promoter sites. Binds DNA with the consensus sequence 5'-[AC]A[AT]T[AG]TT[GT][AG][CT]T[CT]-3' (By similarity). In embryonic development is required for notochord formation. Involved in the development of multiple endoderm-derived organ systems such as the liver, pancreas and lungs; FOXA1 and FOXA2 seem to have at least in part redundant roles. Originally described as a transcription activator for a number of liver genes such as AFP, albumin, tyrosine aminotransferase, PEPCK, etc. Interacts with the cis-acting regulatory regions of these genes. Involved in glucose homeostasis; regulates the expression of genes important for glucose sensing in pancreatic beta- cells and glucose homeostasis. Involved in regulation of fat metabolism. Binds to fibrinogen beta promoter and is involved in IL6- induced fibrinogen beta transcriptional activation.

**Cellular Location**

Nucleus {ECO:0000255|PROSITE-ProRule:PRU00089, ECO:0000269|PubMed:14500912}.  
Cytoplasm Note=Shuttles between the nucleus and cytoplasm in a CRM1-dependent manner; in response to insulin signaling via AKT1 is exported from the nucleus

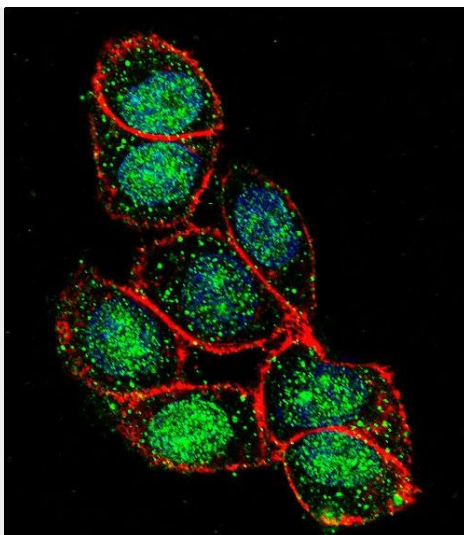
**FOXA2 Antibody (C-term) - Protocols**

Provided below are standard protocols that you may find useful for product applications.

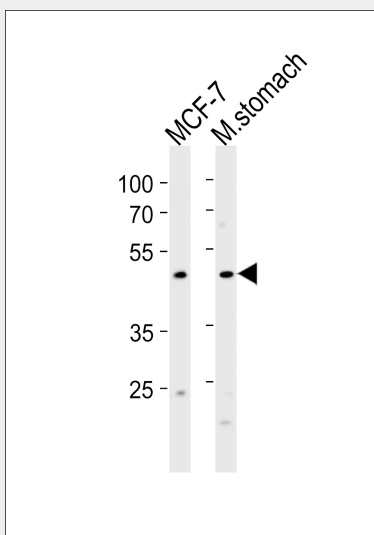
- [Western Blot](#)
- [Blocking Peptides](#)
- [Dot Blot](#)
- [Immunohistochemistry](#)
- [Immunofluorescence](#)
- [Immunoprecipitation](#)
- [Flow Cytometry](#)
- [Cell Culture](#)

**FOXA2 Antibody (C-term) - Images**

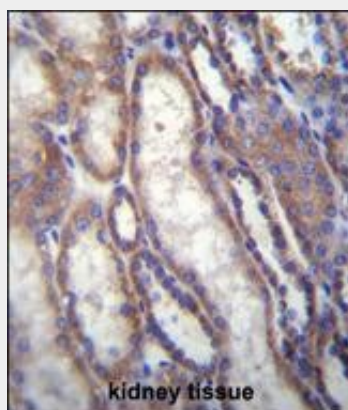




Confocal immunofluorescent analysis of FOXA2 Antibody (C-term)(Cat#AP12031b) with HeLa cell followed by Alexa Fluor 488-conjugated goat anti-rabbit IgG (green). Actin filaments have been labeled with Alexa Fluor 555 phalloidin (red). DAPI was used to stain the cell nuclear (blue).



FOXA2 Antibody (C-term) (Cat. #AP12031b) western blot analysis in MCF-7 cell line and rat stomach tissue lysates (35ug/lane). This demonstrates the FOXA2 antibody detected the FOXA2 protein (arrow).



FOXA2 Antibody (C-term) (Cat. #AP12031b) immunohistochemistry analysis in formalin fixed and

paraffin embedded human kidney tissue followed by peroxidase conjugation of the secondary antibody and DAB staining. This data demonstrates the use of FOXA2 Antibody (C-term) for immunohistochemistry. Clinical relevance has not been evaluated.

#### **FOXA2 Antibody (C-term) - Background**

This gene encodes a member of the forkhead class of DNA-binding proteins. These hepatocyte nuclear factors are transcriptional activators for liver-specific genes such as albumin and transthyretin, and they also interact with chromatin. Similar family members in mice have roles in the regulation of metabolism and in the differentiation of the pancreas and liver. This gene has been linked to sporadic cases of maturity-onset diabetes of the young. Transcript variants encoding different isoforms have been identified for this gene.

#### **FOXA2 Antibody (C-term) - References**

Bailey, S.D., et al. Diabetes Care 33(10):2250-2253(2010)  
Banerjee, A., et al. J. Virol. 84(12):5936-5946(2010)  
Dayoub, R., et al. Biochem. Biophys. Res. Commun. 395(4):465-470(2010)  
Xing, C., et al. Am. J. Hum. Genet. 86(3):440-446(2010)  
Song, Y., et al. Cancer Res. 70(5):2115-2125(2010)

#### **FOXA2 Antibody (C-term) - Citations**

- [Differentiation of adult human retinal pigment epithelial cells into dopaminergic-like cells in vitro and in the recipient monkey brain.](#)
- [Activation of Wnt/ \$\beta\$ -catenin signalling via GSK3 inhibitors direct differentiation of human adipose stem cells into functional hepatocytes.](#)