

DOK3 Antibody (C-term)
Affinity Purified Rabbit Polyclonal Antibody (Pab)
Catalog # AP12040b

Specification

DOK3 Antibody (C-term) - Product Information

Application	IHC-P, WB,E
Primary Accession	O7L591
Other Accession	NP_079148.2
Reactivity	Human
Host	Rabbit
Clonality	Polyclonal
Isotype	Rabbit IgG
Calculated MW	53288
Antigen Region	293-321

DOK3 Antibody (C-term) - Additional Information

Gene ID 79930

Other Names

Docking protein 3, Downstream of tyrosine kinase 3, DOK3

Target/Specificity

This DOK3 antibody is generated from rabbits immunized with a KLH conjugated synthetic peptide between 293-321 amino acids from the C-terminal region of human DOK3.

Dilution

IHC-P~~1:10~50

WB~~1:1000

E~~Use at an assay dependent concentration.

Format

Purified polyclonal antibody supplied in PBS with 0.09% (W/V) sodium azide. This antibody is purified through a protein A column, followed by peptide affinity purification.

Storage

Maintain refrigerated at 2-8°C for up to 2 weeks. For long term storage store at -20°C in small aliquots to prevent freeze-thaw cycles.

Precautions

DOK3 Antibody (C-term) is for research use only and not for use in diagnostic or therapeutic procedures.

DOK3 Antibody (C-term) - Protein Information

Name DOK3

Function DOK proteins are enzymatically inert adaptor or scaffolding proteins. They provide a docking platform for the assembly of multimolecular signaling complexes. DOK3 is a negative regulator of JNK signaling in B-cells through interaction with INPP5D/SHIP1. May modulate ABL1 function (By similarity).

Cellular Location

Cytoplasm. Cell membrane; Peripheral membrane protein; Cytoplasmic side

Tissue Location

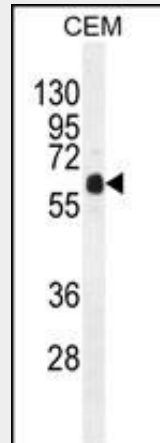
Expressed in spleen..

DOK3 Antibody (C-term) - Protocols

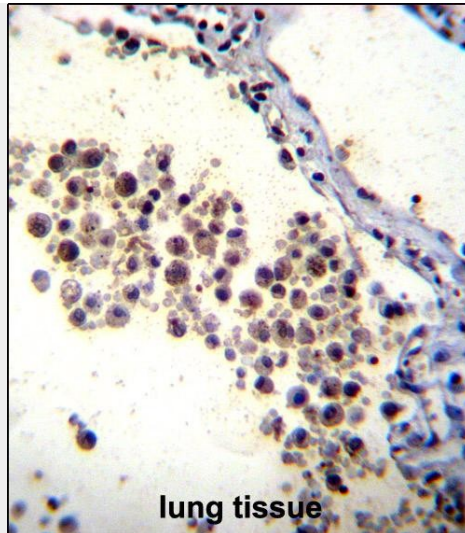
Provided below are standard protocols that you may find useful for product applications.

- [Western Blot](#)
- [Blocking Peptides](#)
- [Dot Blot](#)
- [Immunohistochemistry](#)
- [Immunofluorescence](#)
- [Immunoprecipitation](#)
- [Flow Cytometry](#)
- [Cell Culture](#)

DOK3 Antibody (C-term) - Images



DOK3 Antibody (C-term) (Cat. #AP12040b) western blot analysis in CEM cell line lysates (35ug/lane). This demonstrates the DOK3 antibody detected the DOK3 protein (arrow).



DOK3 Antibody (C-term) (Cat. #AP12040b) immunohistochemistry analysis in formalin fixed and paraffin embedded human lung tissue followed by peroxidase conjugation of the secondary antibody and DAB staining. This data demonstrates the use of DOK3 Antibody (C-term) for immunohistochemistry. Clinical relevance has not been evaluated.

DOK3 Antibody (C-term) - Background

DOK proteins are enzymatically inert adaptor or scaffolding proteins. They provide a docking platform for the assembly of multimolecular signaling complexes. DOK3 is a negative regulator of JNK signaling in B-cells through interaction with INPP5D/SHIP1. May modulate Abl function (By similarity).

DOK3 Antibody (C-term) - References

- Berger, A.H., et al. Nat. Genet. 42(3):216-223(2010)
- Senis, Y.A., et al. J. Thromb. Haemost. 7(10):1718-1726(2009)
- Honma, M., et al. Genes Cells 11(2):143-151(2006)
- Robson, J.D., et al. Mol. Cell. Biol. 24(6):2332-2343(2004)
- Favre, C., et al. Genes Immun. 4(1):40-45(2003)