

XCR1 Antibody (C-term)
Affinity Purified Rabbit Polyclonal Antibody (Pab)
Catalog # AP12041b**Specification**

XCR1 Antibody (C-term) - Product Information

Application	WB,E
Primary Accession	P46094
Other Accession	NP_005274.1
Reactivity	Human
Host	Rabbit
Clonality	Polyclonal
Isotype	Rabbit IgG
Calculated MW	38508
Antigen Region	305-333

XCR1 Antibody (C-term) - Additional Information**Gene ID** 2829**Other Names**

Chemokine XC receptor 1, G-protein coupled receptor 5, Lymphotactin receptor, XC chemokine receptor 1, XCR1, CCXCR1, GPR5

Target/Specificity

This XCR1 antibody is generated from rabbits immunized with a KLH conjugated synthetic peptide between 305-333 amino acids from the C-terminal region of human XCR1.

Dilution

WB~~1:1000

E~~Use at an assay dependent concentration.

Format

Purified polyclonal antibody supplied in PBS with 0.09% (W/V) sodium azide. This antibody is purified through a protein A column, followed by peptide affinity purification.

Storage

Maintain refrigerated at 2-8°C for up to 2 weeks. For long term storage store at -20°C in small aliquots to prevent freeze-thaw cycles.

Precautions

XCR1 Antibody (C-term) is for research use only and not for use in diagnostic or therapeutic procedures.

XCR1 Antibody (C-term) - Protein Information**Name** XCR1

Synonyms CCXCR1, GPR5

Function Receptor for chemokines SCYC1 and SCYC2. Subsequently transduces a signal by increasing the intracellular calcium ions level. Receptor for XCL1/Lymphotactin.

Cellular Location

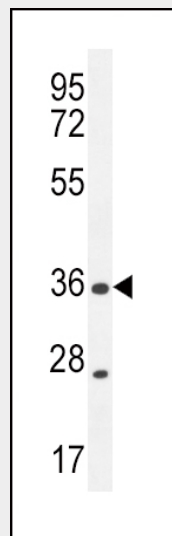
Cell membrane; Multi-pass membrane protein.

XCR1 Antibody (C-term) - Protocols

Provided below are standard protocols that you may find useful for product applications.

- [Western Blot](#)
- [Blocking Peptides](#)
- [Dot Blot](#)
- [Immunohistochemistry](#)
- [Immunofluorescence](#)
- [Immunoprecipitation](#)
- [Flow Cytometry](#)
- [Cell Culture](#)

XCR1 Antibody (C-term) - Images



XCR1 Antibody (C-term) (Cat. #AP12041b) western blot analysis in MDA-MB435 cell line lysates (35ug/lane). This demonstrates the XCR1 antibody detected the XCR1 protein (arrow).

XCR1 Antibody (C-term) - Background

The protein encoded by this gene is a chemokine receptor belonging to the G protein-coupled receptor superfamily. The family members are characterized by the presence of 7 transmembrane domains and numerous conserved amino acids. This receptor is most closely related to RBS11 and the MIP1-alpha/RANTES receptor. It transduces a signal by increasing the intracellular calcium ions level. The viral macrophage inflammatory protein-II is an antagonist of this receptor and blocks signaling. Two alternatively spliced transcript variants encoding the same protein have been

found for this gene.

XCR1 Antibody (C-term) - References

- Yamazaki, C., et al. Biochem. Biophys. Res. Commun. 397(4):756-761(2010)
Crozat, K., et al. J. Exp. Med. 207(6):1283-1292(2010)
Bachem, A., et al. J. Exp. Med. 207(6):1273-1281(2010)
Davila, S., et al. Genes Immun. 11(3):232-238(2010)
Luttichau, H.R. Virol. J. 5, 50 (2008) :