

**CACNG6 Antibody (Center)**  
**Affinity Purified Rabbit Polyclonal Antibody (Pab)**  
**Catalog # AP12044c****Specification**

---

**CACNG6 Antibody (Center) - Product Information**

Application	IF, IHC-P, WB,E
Primary Accession	<a href="#">Q9BXT2</a>
Other Accession	<a href="#">Q8VHW3</a> , <a href="#">NP_114103.2</a>
Reactivity	Human
Predicted	Mouse
Host	Rabbit
Clonality	Polyclonal
Isotype	Rabbit IgG
Calculated MW	28129
Antigen Region	108-136

**CACNG6 Antibody (Center) - Additional Information****Gene ID** 59285**Other Names**

Voltage-dependent calcium channel gamma-6 subunit, Neuronal voltage-gated calcium channel gamma-6 subunit, CACNG6

**Target/Specificity**

This CACNG6 antibody is generated from rabbits immunized with a KLH conjugated synthetic peptide between 108-136 amino acids from the Central region of human CACNG6.

**Dilution**

IF~~1:10~50  
IHC-P~~1:10~50  
WB~~1:1000  
E~~Use at an assay dependent concentration.

**Format**

Purified polyclonal antibody supplied in PBS with 0.09% (W/V) sodium azide. This antibody is purified through a protein A column, followed by peptide affinity purification.

**Storage**

Maintain refrigerated at 2-8°C for up to 2 weeks. For long term storage store at -20°C in small aliquots to prevent freeze-thaw cycles.

**Precautions**

CACNG6 Antibody (Center) is for research use only and not for use in diagnostic or therapeutic procedures.

**CACNG6 Antibody (Center) - Protein Information**

**Name** CACNG6

**Function** Regulates the activity of L-type calcium channels that contain CACNA1C as pore-forming subunit.

**Cellular Location**

Cell membrane; Multi-pass membrane protein

**Tissue Location**

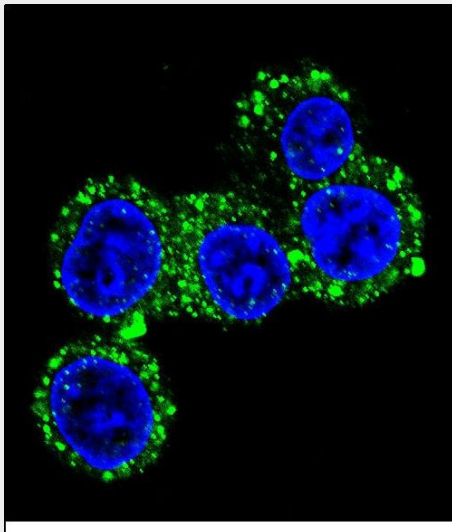
Detected in heart left ventricle.

**CACNG6 Antibody (Center) - Protocols**

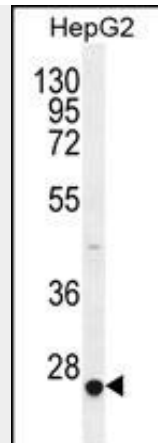
Provided below are standard protocols that you may find useful for product applications.

- [Western Blot](#)
- [Blocking Peptides](#)
- [Dot Blot](#)
- [Immunohistochemistry](#)
- [Immunofluorescence](#)
- [Immunoprecipitation](#)
- [Flow Cytometry](#)
- [Cell Culture](#)

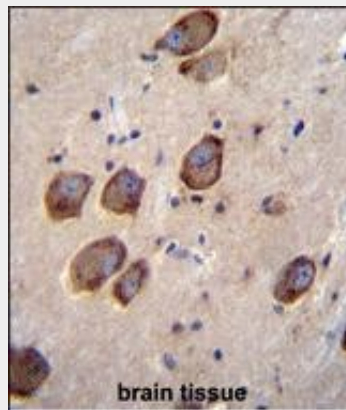
**CACNG6 Antibody (Center) - Images**



Confocal immunofluorescent analysis of CACNG6 Antibody (Center)(Cat#AP12044c) with HepG2 cell followed by Alexa Fluor 488-conjugated goat anti-rabbit IgG (green). DAPI was used to stain the cell nuclear (blue).



CACNG6 Antibody (Center) (Cat. #AP12044c) western blot analysis in HepG2 cell line lysates (35ug/lane). This demonstrates the CACNG6 antibody detected the CACNG6 protein (arrow).



CACNG6 Antibody (Center) (Cat. #AP12044c) immunohistochemistry analysis in formalin fixed and paraffin embedded human brain tissue followed by peroxidase conjugation of the secondary antibody and DAB staining. This data demonstrates the use of CACNG6 Antibody (Center) for immunohistochemistry. Clinical relevance has not been evaluated.

### **CACNG6 Antibody (Center) - Background**

Voltage-dependent calcium channels are composed of five subunits. The protein encoded by this gene represents one of these subunits, gamma, and is one of two known gamma subunit proteins. This particular gamma subunit is an integral membrane protein that is thought to stabilize the calcium channel in an inactive (closed) state. This gene is part of a functionally diverse eight-member protein subfamily of the PMP-22/EMP/MP20 family and is located in a cluster with two family members that function as transmembrane AMPA receptor regulatory proteins (TARPs). Alternative splicing results in multiple transcript variants. Variants in this gene have been associated with aspirin-intolerant asthma.

### **CACNG6 Antibody (Center) - References**

Lee, J.S., et al. BMC Med. Genet. 11, 138 (2010) :  
Chen, R.S., et al. Cell Biochem. Biophys. 47(2):178-186(2007)  
Chu, P.J., et al. Gene 280 (1-2), 37-48 (2001) :  
Burgess, D.L., et al. Genomics 71(3):339-350(2001)