

SH2D4A Antibody (N-term)
Affinity Purified Rabbit Polyclonal Antibody (Pab)
Catalog # AP12049A**Specification**

SH2D4A Antibody (N-term) - Product Information

Application	WB, IHC-P,E
Primary Accession	Q9H788
Other Accession	NP_071354.2
Reactivity	Human
Host	Rabbit
Clonality	Polyclonal
Isotype	Rabbit IgG
Calculated MW	52727
Antigen Region	38-67

SH2D4A Antibody (N-term) - Additional Information**Gene ID** 63898**Other Names**

SH2 domain-containing protein 4A, Protein SH(2)A, Protein phosphatase 1 regulatory subunit 38, SH2D4A, PPP1R38, SH2A

Target/Specificity

This SH2D4A antibody is generated from rabbits immunized with a KLH conjugated synthetic peptide between 38-67 amino acids from the N-terminal region of human SH2D4A.

Dilution

WB~~1:1000

IHC-P~~1:10~50

Format

Purified polyclonal antibody supplied in PBS with 0.09% (W/V) sodium azide. This antibody is purified through a protein A column, followed by peptide affinity purification.

Storage

Maintain refrigerated at 2-8°C for up to 2 weeks. For long term storage store at -20°C in small aliquots to prevent freeze-thaw cycles.

Precautions

SH2D4A Antibody (N-term) is for research use only and not for use in diagnostic or therapeutic procedures.

SH2D4A Antibody (N-term) - Protein Information**Name** SH2D4A

Synonyms PPP1R38, SH2A

Function Inhibits estrogen-induced cell proliferation by competing with PLCG for binding to ESR1, blocking the effect of estrogen on PLCG and repressing estrogen-induced proliferation. May play a role in T- cell development and function.

Cellular Location

Cytoplasm. Note=Located at podocyte foot processes.

Tissue Location

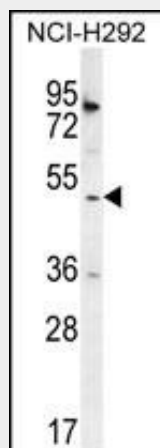
Ubiquitously expressed. Aberrantly expressed in some cancers.

SH2D4A Antibody (N-term) - Protocols

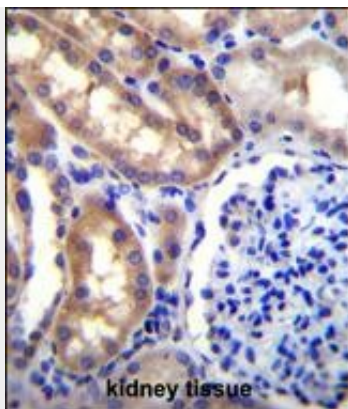
Provided below are standard protocols that you may find useful for product applications.

- [Western Blot](#)
- [Blocking Peptides](#)
- [Dot Blot](#)
- [Immunohistochemistry](#)
- [Immunofluorescence](#)
- [Immunoprecipitation](#)
- [Flow Cytometry](#)
- [Cell Culture](#)

SH2D4A Antibody (N-term) - Images



SH2D4A Antibody (N-term) (Cat. #AP12049a) western blot analysis in NCI-H292 cell line lysates (35ug/lane). This demonstrates the SH2D4A antibody detected the SH2D4A protein (arrow).



SH2D4A Antibody (N-term) (Cat. #AP12049a) immunohistochemistry analysis in formalin fixed and paraffin embedded human kidney tissue followed by peroxidase conjugation of the secondary antibody and DAB staining. This data demonstrates the use of SH2D4A Antibody (N-term) for immunohistochemistry. Clinical relevance has not been evaluated.

SH2D4A Antibody (N-term) - Background

SH2D4A inhibits estrogen-induced cell proliferation by competing with PLCG for binding to ESR1, blocking the effect of estrogen on PLCG and repressing estrogen-induced proliferation. May play a role in T-cell development and function.

SH2D4A Antibody (N-term) - References

Rose, J.E., et al. Mol. Med. 16 (7-8), 247-253 (2010) :
Li, T., et al. BMB Rep 42(8):516-522(2009)
Venkatesan, K., et al. Nat. Methods 6(1):83-90(2009)
Lapinski, P.E., et al. J. Immunol. 181(3):2019-2027(2008)
Sugiyama, N., et al. Mol. Cell Proteomics 6(6):1103-1109(2007)