

Kif5C-2 Antibody
Affinity Purified Rabbit Polyclonal Antibody (Pab)
Catalog # AP12055a**Specification**

Kif5C-2 Antibody - Product Information

Application	WB, IHC-P,E
Primary Accession	O60282
Other Accession	P28738 , NP_004513.1
Reactivity	Human, Mouse
Host	Rabbit
Clonality	Polyclonal
Isotype	Rabbit IgG
Calculated MW	109495

Kif5C-2 Antibody - Additional Information**Gene ID** 3800**Other Names**

Kinesin heavy chain isoform 5C, Kinesin heavy chain neuron-specific 2, KIF5C, KIAA0531, NKHC2

Target/Specificity

This KIF5C antibody is generated from rabbits immunized with a KLH conjugated synthetic peptide selected from human KIF5C.

Dilution

WB~~1:1000

IHC-P~~1:50~100

E~~Use at an assay dependent concentration.

Format

Purified polyclonal antibody supplied in PBS with 0.09% (W/V) sodium azide. This antibody is purified through a protein A column, followed by peptide affinity purification.

Storage

Maintain refrigerated at 2-8°C for up to 2 weeks. For long term storage store at -20°C in small aliquots to prevent freeze-thaw cycles.

Precautions

Kif5C-2 Antibody is for research use only and not for use in diagnostic or therapeutic procedures.

Kif5C-2 Antibody - Protein Information**Name** KIF5C**Synonyms** KIAA0531, NKHC2

Function Microtubule-associated force-producing protein that may play a role in organelle transport. Has ATPase activity (By similarity). Involved in synaptic transmission (PubMed:[24812067](#)). Mediates dendritic trafficking of mRNAs (By similarity). Required for anterograde axonal transportation of MAPK8IP3/JIP3 which is essential for MAPK8IP3/JIP3 function in axon elongation (By similarity).

Cellular Location

Cytoplasm, cytoskeleton. Cell projection, dendrite. Note=Abundant in distal regions of dendrites.

Tissue Location

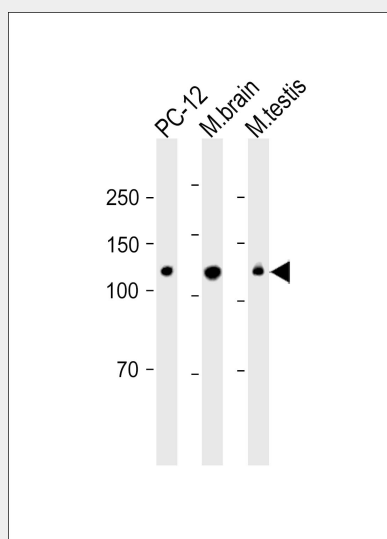
Highest expression in brain, prostate and testis, and moderate expression in kidney, small intestine and ovary

Kif5C-2 Antibody - Protocols

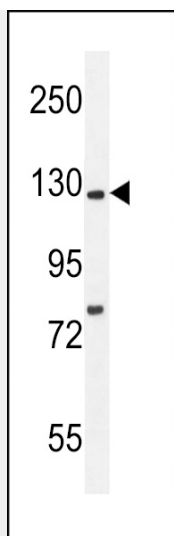
Provided below are standard protocols that you may find useful for product applications.

- [Western Blot](#)
- [Blocking Peptides](#)
- [Dot Blot](#)
- [Immunohistochemistry](#)
- [Immunofluorescence](#)
- [Immunoprecipitation](#)
- [Flow Cytometry](#)
- [Cell Culture](#)

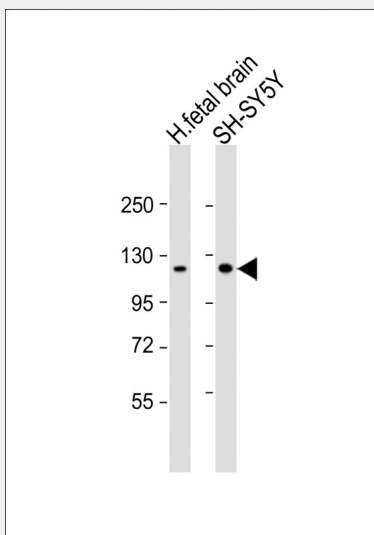
Kif5C-2 Antibody - Images



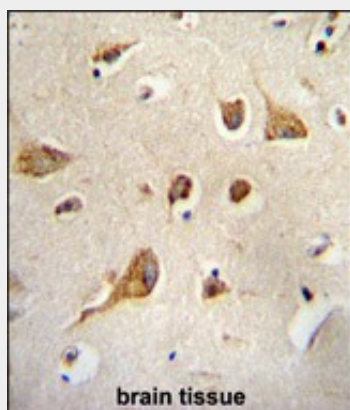
All lanes: Anti-Kif5C-2 Antibody at 1:2000 dilution Lane 1: PC-12 whole cell lysate Lane 2: Mouse brain lysate Lane 3: Mouse testis lysate Lysates/proteins at 20 µg per lane. Secondary: Goat Anti-Rabbit IgG, (H+L), Peroxidase conjugated (ASP1615) at 1/15000 dilution. Observed band size: 110 KDa Blocking/Dilution buffer: 5% NFDM/TBST.



Kif5C-2 Antibody (Cat. #AP12055a) western blot analysis in mouse brain tissue lysates (35ug/lane). This demonstrates the Kif5C-2 antibody detected the Kif5C-2 protein (arrow).



All lanes : Anti-Kif5C-2 Antibody at 1:1000 dilution Lane 1: human fetal brain lysate Lane 2: SH-SY5Y whole cell lysate Lysates/proteins at 20 µg per lane. Secondary Goat Anti-Rabbit IgG, (H+L), Peroxidase conjugated at 1/10000 dilution. Predicted band size : 109 kDa Blocking/Dilution buffer: 5% NFDM/TBST.



Kif5C-2 Antibody (Cat. #AP12055a) immunohistochemistry analysis in formalin fixed and paraffin

embedded human brain tissue followed by peroxidase conjugation of the secondary antibody and DAB staining. This data demonstrates the use of Kif5C-2 Antibody for immunohistochemistry. Clinical relevance has not been evaluated.

Kif5C-2 Antibody - Background

Kinesin is a microtubule-associated force-producing protein that may play a role in organelle transport.

Kif5C-2 Antibody - References

Rose, J. Phd, et al. Mol. Med. (2010) In press :
Wang, X., et al. Cell 136(1):163-174(2009)
Schafer, B., et al. Cell. Mol. Life Sci. 66(2):339-349(2009)
Schafer, B., et al. Biochem. Biophys. Res. Commun. 375(2):179-183(2008)
Cho, K.I., et al. Traffic 8(12):1722-1735(2007)