

TGIF1 Antibody (Center A160)
Purified Rabbit Polyclonal Antibody (Pab)
Catalog # AP12062c**Specification**

TGIF1 Antibody (Center A160) - Product Information

Application	WB,E
Primary Accession	Q15583
Other Accession	Q90655 , NP_733796.2 , NP_003235.1
Reactivity	Human
Predicted	Chicken
Host	Rabbit
Clonality	Polyclonal
Isotype	Rabbit IgG
Calculated MW	43013
Antigen Region	145-174

TGIF1 Antibody (Center A160) - Additional Information**Gene ID** 7050**Other Names**

Homeobox protein TGIF1, 5'-TG-3'-interacting factor 1, TGIF1, TGIF

Target/Specificity

This TGIF1 antibody is generated from rabbits immunized with a KLH conjugated synthetic peptide between 145-174 amino acids from the Central region of human TGIF1.

Dilution

WB~~1:1000

E~~Use at an assay dependent concentration.

Format

Purified polyclonal antibody supplied in PBS with 0.09% (W/V) sodium azide. This antibody is prepared by Saturated Ammonium Sulfate (SAS) precipitation followed by dialysis against PBS.

Storage

Maintain refrigerated at 2-8°C for up to 2 weeks. For long term storage store at -20°C in small aliquots to prevent freeze-thaw cycles.

Precautions

TGIF1 Antibody (Center A160) is for research use only and not for use in diagnostic or therapeutic procedures.

TGIF1 Antibody (Center A160) - Protein Information**Name** TGIF1

Synonyms TGIF

Function Binds to a retinoid X receptor (RXR) responsive element from the cellular retinol-binding protein II promoter (CRBP-II-RXRE). Inhibits the 9-cis-retinoic acid-dependent RXR alpha transcription activation of the retinoic acid responsive element. Active transcriptional corepressor of SMAD2. Links the nodal signaling pathway to the bifurcation of the forebrain and the establishment of ventral midline structures. May participate in the transmission of nuclear signals during development and in the adult, as illustrated by the down-modulation of the RXR alpha activities.

Cellular Location

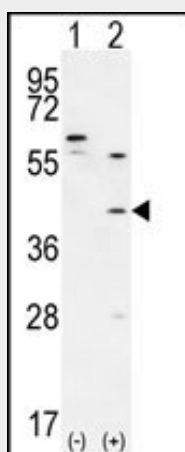
Nucleus.

TGIF1 Antibody (Center A160) - Protocols

Provided below are standard protocols that you may find useful for product applications.

- [Western Blot](#)
- [Blocking Peptides](#)
- [Dot Blot](#)
- [Immunohistochemistry](#)
- [Immunofluorescence](#)
- [Immunoprecipitation](#)
- [Flow Cytometry](#)
- [Cell Culture](#)

TGIF1 Antibody (Center A160) - Images



Western blot analysis of TGIF1 (arrow) using rabbit polyclonal TGIF1 Antibody (Center A160) (Cat. #AP12062c). 293 cell lysates (2 ug/lane) either nontransfected (Lane 1) or transiently transfected (Lane 2) with the TGIF1 gene.

TGIF1 Antibody (Center A160) - Background

The protein encoded by this gene is a member of the three-amino acid loop extension (TALE) superclass of atypical homeodomains. TALE homeobox proteins are highly conserved transcription regulators. This particular homeodomain binds to a previously characterized retinoid X receptor responsive element from the cellular retinol-binding protein II promoter. In addition

to its role in inhibiting 9-cis-retinoic acid-dependent RXR alpha transcription activation of the retinoic acid responsive element, the protein is an active transcriptional co-repressor of SMAD2 and may participate in the transmission of nuclear signals during development and in the adult. Mutations in this gene are associated with holoprosencephaly type 4, which is a structural anomaly of the brain. Alternative splicing has been observed at this locus and eight variants, encoding four distinct isoforms, are described.

TGIF1 Antibody (Center A160) - References

Bengoechea-Alonso, M.T., et al. Oncogene 29(38):5322-5328(2010)
Paulussen, A.D., et al. Eur. J. Hum. Genet. 18(9):999-1005(2010)
Jugessur, A., et al. PLoS ONE 5 (7), E11493 (2010) :
Demange, C., et al. Mol. Cell 36(6):1073-1085(2009)
Hamid, R., et al. Mol Oncol 3 (5-6), 451-463 (2009) :