

Maspin Antibody (Center)
Affinity Purified Rabbit Polyclonal Antibody (Pab)
Catalog # AP12083c**Specification**

Maspin Antibody (Center) - Product Information

| | |
|-------------------|------------------------------------------------------|
| Application | WB, IF, IHC-P,E |
| Primary Accession | P36952 |
| Other Accession | P70124 , NP_002630.2 |
| Reactivity | Human, Mouse |
| Host | Rabbit |
| Clonality | Polyclonal |
| Isotype | Rabbit IgG |
| Antigen Region | 94-123 |

Maspin Antibody (Center) - Additional Information**Gene ID** 5268**Other Names**

Serpine B5, Maspin, Peptidase inhibitor 5, PI-5, SERPINB5, PI5

Target/Specificity

This Maspin antibody is generated from rabbits immunized with a KLH conjugated synthetic peptide between 94-123 amino acids from the Central region of human Maspin.

Dilution

WB~~1:1000

IF~~1:10~50

IHC-P~~1:50~100

E~~Use at an assay dependent concentration.

Format

Purified polyclonal antibody supplied in PBS with 0.09% (W/V) sodium azide. This antibody is purified through a protein A column, followed by peptide affinity purification.

Storage

Maintain refrigerated at 2-8°C for up to 2 weeks. For long term storage store at -20°C in small aliquots to prevent freeze-thaw cycles.

Precautions

Maspin Antibody (Center) is for research use only and not for use in diagnostic or therapeutic procedures.

Maspin Antibody (Center) - Protein Information**Name** SERPINB5

Synonyms PI5

Function Tumor suppressor. It blocks the growth, invasion, and metastatic properties of mammary tumors. As it does not undergo the S (stressed) to R (relaxed) conformational transition characteristic of active serpins, it exhibits no serine protease inhibitory activity.

Cellular Location

Secreted, extracellular space.

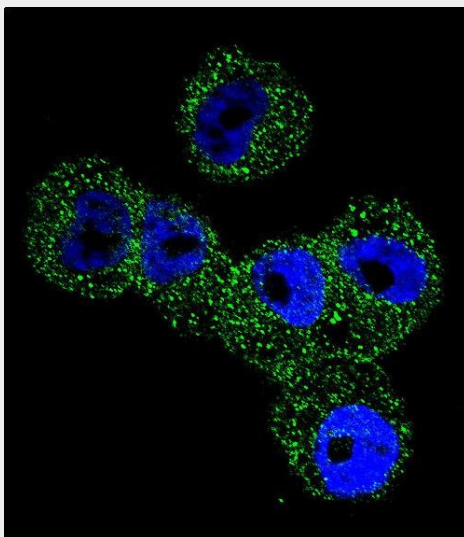
Tissue Location

Normal mammary epithelial cells.

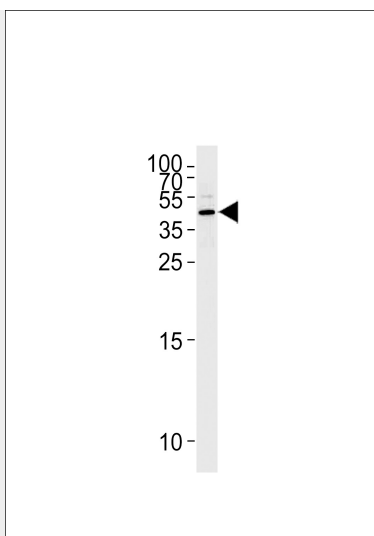
Maspin Antibody (Center) - Protocols

Provided below are standard protocols that you may find useful for product applications.

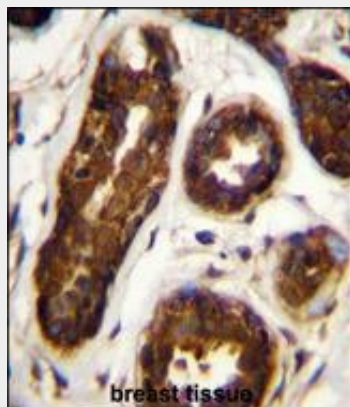
- [Western Blot](#)
- [Blocking Peptides](#)
- [Dot Blot](#)
- [Immunohistochemistry](#)
- [Immunofluorescence](#)
- [Immunoprecipitation](#)
- [Flow Cytometry](#)
- [Cell Culture](#)

Maspin Antibody (Center) - Images

Confocal immunofluorescent analysis of Maspin Antibody (Center)(Cat#AP12083c) with A2058 cell followed by Alexa Fluor 488-conjugated goat anti-rabbit IgG (green). DAPI was used to stain the cell nuclear (blue).



Western blot analysis of lysate from Hela cell line, using Maspin Antibody (Center) (Cat. #AP12083c). AP12083c was diluted at 1:1000 at each lane. A goat anti-rabbit IgG H&L (HRP) at 1:5000 dilution was used as the secondary antibody. Lysate at 35 µg per lane.



Maspin Antibody (Center) (Cat. #AP12083c) immunohistochemistry analysis in formalin fixed and paraffin embedded human breast tissue followed by peroxidase conjugation of the secondary antibody and DAB staining. This data demonstrates the use of Maspin Antibody (Center) for immunohistochemistry. Clinical relevance has not been evaluated.

Maspin Antibody (Center) - Background

SERPINB5 is a tumor suppressor. It blocks the growth, invasion, and metastatic properties of mammary tumors. As it does not undergo the S (stressed) to R (relaxed) conformational transition characteristic of active serpins, it exhibits no serine protease inhibitory activity.

Maspin Antibody (Center) - References

Kim, J., et al. Tumour Biol. 31(5):471-476(2010)
Juengel, E., et al. World J Urol 28(4):465-471(2010)
Besgen, P., et al. J. Immunol. 184(9):5392-5402(2010)
Fung, C.L., et al. Histopathology 56(3):319-330(2010)
Adim, S.B., et al. World J Surg Oncol 8, 22 (2010) :

Maspin Antibody (Center) - Citations

- [Maspin impairs the function of endothelial cells: an implying pathway of preeclampsia.](#)
- [Decitabine improves the clinical manifestations of rats with l-NAME-induced pre-eclampsia: a potential approach to studying pre-eclampsia.](#)

