

VILL Antibody (Center)
Affinity Purified Rabbit Polyclonal Antibody (Pab)
Catalog # AP12085c**Specification**

VILL Antibody (Center) - Product Information

Application	FC, IF, IHC-P, WB,E
Primary Accession	O15195
Other Accession	NP_056957.3
Reactivity	Human
Host	Rabbit
Clonality	Polyclonal
Isotype	Rabbit IgG
Calculated MW	95907
Antigen Region	385-412

VILL Antibody (Center) - Additional Information**Gene ID** 50853**Other Names**

Villin-like protein, VILL

Target/Specificity

This VILL antibody is generated from rabbits immunized with a KLH conjugated synthetic peptide between 385-412 amino acids from the Central region of human VILL.

Dilution

FC~~1:10~50

IF~~1:10~50

IHC-P~~1:50~100

WB~~1:1000

E~~Use at an assay dependent concentration.

Format

Purified polyclonal antibody supplied in PBS with 0.09% (W/V) sodium azide. This antibody is purified through a protein A column, followed by peptide affinity purification.

Storage

Maintain refrigerated at 2-8°C for up to 2 weeks. For long term storage store at -20°C in small aliquots to prevent freeze-thaw cycles.

Precautions

VILL Antibody (Center) is for research use only and not for use in diagnostic or therapeutic procedures.

VILL Antibody (Center) - Protein Information

Name VILL

Function Possible tumor suppressor.

Tissue Location

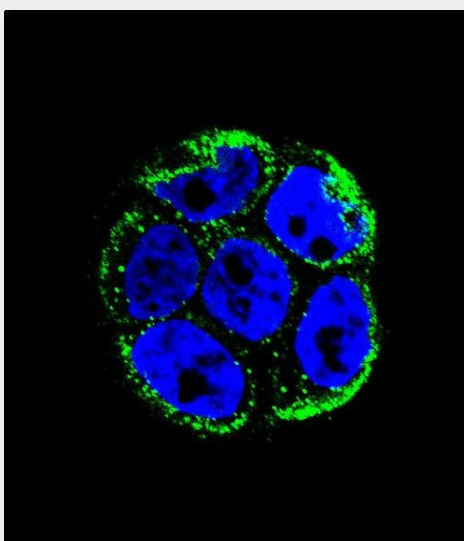
Ubiquitously expressed in 16 tissues examined.

VILL Antibody (Center) - Protocols

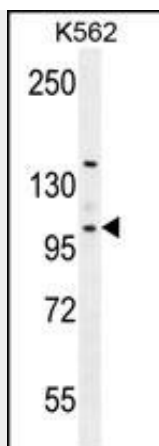
Provided below are standard protocols that you may find useful for product applications.

- [Western Blot](#)
- [Blocking Peptides](#)
- [Dot Blot](#)
- [Immunohistochemistry](#)
- [Immunofluorescence](#)
- [Immunoprecipitation](#)
- [Flow Cytometry](#)
- [Cell Culture](#)

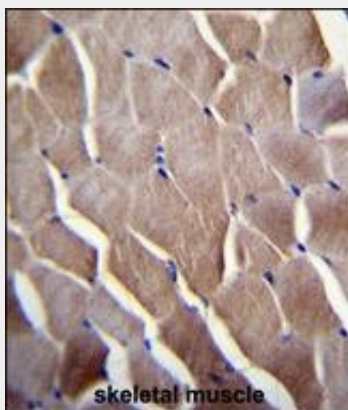
VILL Antibody (Center) - Images



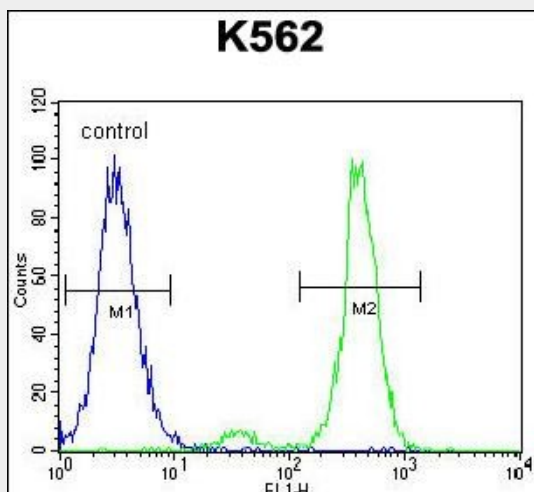
Confocal immunofluorescent analysis of VILL Antibody (Center)(Cat#AP12085c) with WiDr cell followed by Alexa Fluor 488-conjugated goat anti-rabbit IgG (green). DAPI was used to stain the cell nuclear (blue).



VILL Antibody (Center) (Cat. #AP12085c) western blot analysis in K562 cell line lysates (35ug/lane). This demonstrates the VILL antibody detected the VILL protein (arrow).



VILL Antibody (Center) (Cat. #AP12085c) immunohistochemistry analysis in formalin fixed and paraffin embedded human skeletal muscle followed by peroxidase conjugation of the secondary antibody and DAB staining. This data demonstrates the use of VILL Antibody (Center) for immunohistochemistry. Clinical relevance has not been evaluated.



VILL Antibody (Center) (Cat. #AP12085c) flow cytometric analysis of K562 cells (right histogram) compared to a negative control cell (left histogram). FITC-conjugated goat-anti-rabbit secondary antibodies were used for the analysis.

VILL Antibody (Center) - Background

The protein encoded by this gene belongs to the villin/gelsolin family. It contains 6 gelsolin-like repeats and a headpiece domain. It may play a role in actin-bundling. [provided by RefSeq].

VILL Antibody (Center) - References

Piana, S., et al. J. Mol. Biol. 375(2):460-470(2008)
Yamamichi, N., et al. Cancer Res. 67(22):10727-10735(2007)
Tomar, A., et al. J. Biol. Chem. 281(42):31972-31986(2006)
Ishikawa, S., et al. DNA Res. 4(1):35-43(1997)