

**ENPEP Antibody (C-term)**  
**Affinity Purified Rabbit Polyclonal Antibody (Pab)**  
**Catalog # AP12090b****Specification**

---

**ENPEP Antibody (C-term) - Product Information**

Application	FC, IHC-P, WB,E
Primary Accession	<a href="#">Q07075</a>
Other Accession	<a href="#">NP_001968.3</a>
Reactivity	Human
Host	Rabbit
Clonality	Polyclonal
Isotype	Rabbit IgG
Calculated MW	109244
Antigen Region	899-930

**ENPEP Antibody (C-term) - Additional Information****Gene ID** 2028**Other Names**

Glutamyl aminopeptidase, EAP, Aminopeptidase A, AP-A, Differentiation antigen gp160, CD249, ENPEP

**Target/Specificity**

This ENPEP antibody is generated from rabbits immunized with a KLH conjugated synthetic peptide between 899-930 amino acids from the C-terminal region of human ENPEP.

**Dilution**

FC~~1:10~50

IHC-P~~1:50~100

WB~~1:1000

E~~Use at an assay dependent concentration.

**Format**

Purified polyclonal antibody supplied in PBS with 0.09% (W/V) sodium azide. This antibody is purified through a protein A column, followed by peptide affinity purification.

**Storage**

Maintain refrigerated at 2-8°C for up to 2 weeks. For long term storage store at -20°C in small aliquots to prevent freeze-thaw cycles.

**Precautions**

ENPEP Antibody (C-term) is for research use only and not for use in diagnostic or therapeutic procedures.

**ENPEP Antibody (C-term) - Protein Information**

**Name** ENPEP

**Function** Regulates central hypertension through its calcium-modulated preference to cleave N-terminal acidic residues from peptides such as angiotensin II.

**Cellular Location**

Cell membrane; Single-pass type II membrane protein

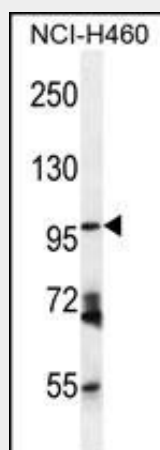
**Tissue Location**

Expressed in choriocarcinoma cancer cell lines (at protein level) (PubMed:10692253). Expressed by epithelial cells of the proximal tubule cells and the glomerulus of the nephron. Also found in a variety of other tissues.

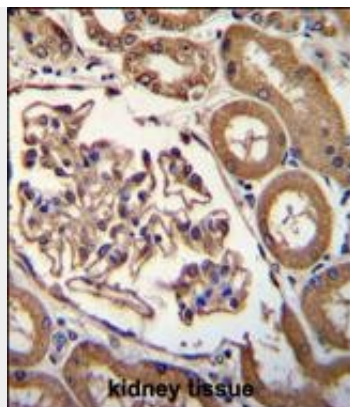
**ENPEP Antibody (C-term) - Protocols**

Provided below are standard protocols that you may find useful for product applications.

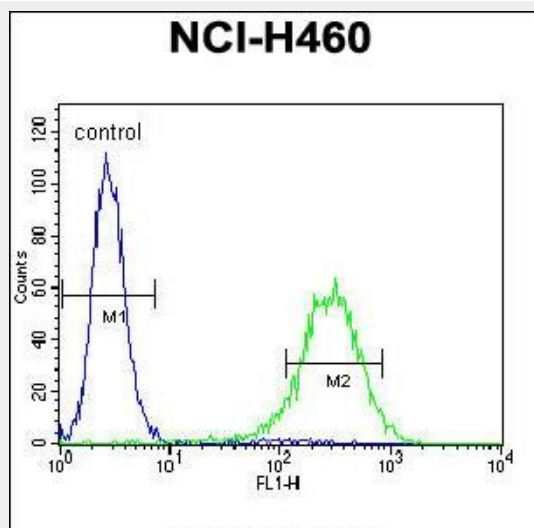
- [Western Blot](#)
- [Blocking Peptides](#)
- [Dot Blot](#)
- [Immunohistochemistry](#)
- [Immunofluorescence](#)
- [Immunoprecipitation](#)
- [Flow Cytometry](#)
- [Cell Culture](#)

**ENPEP Antibody (C-term) - Images**

ENPEP Antibody (C-term) (Cat. #AP12090b) western blot analysis in NCI-H460 cell line lysates (35ug/lane). This demonstrates the ENPEP antibody detected the ENPEP protein (arrow).



ENPEP Antibody (C-term) (Cat. #AP12090b) immunohistochemistry analysis in formalin fixed and paraffin embedded human kidney tissue followed by peroxidase conjugation of the secondary antibody and DAB staining. This data demonstrates the use of ENPEP Antibody (C-term) for immunohistochemistry. Clinical relevance has not been evaluated.



ENPEP Antibody (C-term) (Cat. #AP12090b) flow cytometric analysis of NCI-H460 cells (right histogram) compared to a negative control cell (left histogram). FITC-conjugated goat-anti-rabbit secondary antibodies were used for the analysis.

### ENPEP Antibody (C-term) - Background

ENPEP appears to have a role in the catabolic pathway of the renin-angiotensin system. Probably plays a role in regulating growth and differentiation of early B-lineage cells.

### ENPEP Antibody (C-term) - References

- Kalsi, G., et al. Hum. Mol. Genet. 19(12):2497-2506(2010)
- Rose, J. PhD, et al. Mol. Med. (2010) In press :
- Perez, I., et al. Head Neck 31(10):1335-1340(2009)
- Sevalle, J., et al. J. Neurochem. 109(1):248-256(2009)
- Teranishi, J., et al. Prostate 68(15):1666-1673(2008)