

MED6 Antibody (C-term)
Affinity Purified Rabbit Polyclonal Antibody (Pab)
Catalog # AP12093b**Specification**

MED6 Antibody (C-term) - Product Information

Application	WB,E
Primary Accession	O75586
Other Accession	NP_005457.2
Reactivity	Human
Host	Rabbit
Clonality	Polyclonal
Isotype	Rabbit IgG
Calculated MW	28425
Antigen Region	217-246

MED6 Antibody (C-term) - Additional Information**Gene ID** 10001**Other Names**

Mediator of RNA polymerase II transcription subunit 6, Activator-recruited cofactor 33 kDa component, ARC33, Mediator complex subunit 6, hMed6, Renal carcinoma antigen NY-REN-28, MED6, ARC33

Target/Specificity

This MED6 antibody is generated from rabbits immunized with a KLH conjugated synthetic peptide between 217-246 amino acids from the C-terminal region of human MED6.

Dilution

WB~~1:1000

E~~Use at an assay dependent concentration.

Format

Purified polyclonal antibody supplied in PBS with 0.09% (W/V) sodium azide. This antibody is purified through a protein A column, followed by peptide affinity purification.

Storage

Maintain refrigerated at 2-8°C for up to 2 weeks. For long term storage store at -20°C in small aliquots to prevent freeze-thaw cycles.

Precautions

MED6 Antibody (C-term) is for research use only and not for use in diagnostic or therapeutic procedures.

MED6 Antibody (C-term) - Protein Information**Name** MED6

Synonyms ARC33

Function Component of the Mediator complex, a coactivator involved in the regulated transcription of nearly all RNA polymerase II-dependent genes. Mediator functions as a bridge to convey information from gene-specific regulatory proteins to the basal RNA polymerase II transcription machinery. Mediator is recruited to promoters by direct interactions with regulatory proteins and serves as a scaffold for the assembly of a functional preinitiation complex with RNA polymerase II and the general transcription factors.

Cellular Location

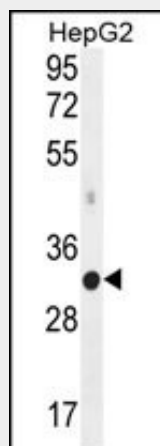
Nucleus.

MED6 Antibody (C-term) - Protocols

Provided below are standard protocols that you may find useful for product applications.

- [Western Blot](#)
- [Blocking Peptides](#)
- [Dot Blot](#)
- [Immunohistochemistry](#)
- [Immunofluorescence](#)
- [Immunoprecipitation](#)
- [Flow Cytometry](#)
- [Cell Culture](#)

MED6 Antibody (C-term) - Images



MED6 Antibody (C-term) (Cat. #AP12093b) western blot analysis in HepG2 cell line lysates (35ug/lane). This demonstrates the MED6 antibody detected the MED6 protein (arrow).

MED6 Antibody (C-term) - Background

Component of the Mediator complex, a coactivator involved in the regulated transcription of nearly all RNA polymerase II-dependent genes. Mediator functions as a bridge to convey information from gene-specific regulatory proteins to the basal RNA polymerase II transcription machinery. Mediator is recruited to promoters by direct interactions with regulatory proteins and serves as a scaffold for the assembly of a functional preinitiation complex with RNA polymerase II and the general transcription factors.

MED6 Antibody (C-term) - References

Pavri, R., et al. Mol. Cell 18(1):83-96(2005)
Sato, S., et al. Mol. Cell 14(5):685-691(2004)
Yang, F., et al. Proc. Natl. Acad. Sci. U.S.A. 101(8):2339-2344(2004)
Tomomori-Sato, C., et al. J. Biol. Chem. 279(7):5846-5851(2004)
Sato, S., et al. J. Biol. Chem. 278(50):49671-49674(2003)