

RBPM2 Antibody (Center)
Affinity Purified Rabbit Polyclonal Antibody (Pab)
Catalog # AP12121c**Specification**

RBPM2 Antibody (Center) - Product Information

Application	WB, IHC-P,E
Primary Accession	Q6ZRY4
Other Accession	Q9YGP5 , Q9W6I1 , NP_919248.1 , Q6DH13
Reactivity	Mouse
Predicted	Zebrafish, Chicken, Xenopus
Host	Rabbit
Clonality	Polyclonal
Isotype	Rabbit IgG
Calculated MW	22497
Antigen Region	113-141

RBPM2 Antibody (Center) - Additional Information**Gene ID** 348093**Other Names**

RNA-binding protein with multiple splicing 2, RBPM2

Target/Specificity

This RBPM2 antibody is generated from rabbits immunized with a KLH conjugated synthetic peptide between 113-141 amino acids from the Central region of human RBPM2.

Dilution

WB~~1:1000

IHC-P~~1:10~50

Format

Purified polyclonal antibody supplied in PBS with 0.09% (W/V) sodium azide. This antibody is purified through a protein A column, followed by peptide affinity purification.

Storage

Maintain refrigerated at 2-8°C for up to 2 weeks. For long term storage store at -20°C in small aliquots to prevent freeze-thaw cycles.

Precautions

RBPM2 Antibody (Center) is for research use only and not for use in diagnostic or therapeutic procedures.

RBPM2 Antibody (Center) - Protein Information**Name** RBPM2

Function RNA-binding protein involved in the regulation of smooth muscle cell differentiation and proliferation in the gastrointestinal system (PubMed:[25064856](#)). Binds NOG mRNA, the major inhibitor of the bone morphogenetic protein (BMP) pathway. Mediates an increase of NOG mRNA levels, thereby contributing to the negative regulation of BMP signaling pathway and promoting reversible dedifferentiation and proliferation of smooth muscle cells (By similarity). Acts as a pre-mRNA alternative splicing regulator (By similarity). Mediates ACTN1 and FLNB alternative splicing (By similarity). Likely binds to mRNA tandem CAC trinucleotide or CA dinucleotide motifs (PubMed:[24860013](#)).

Cellular Location

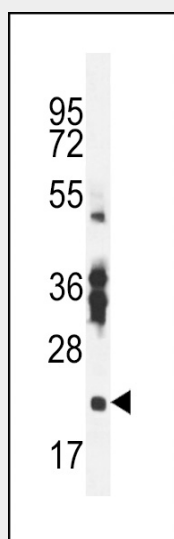
Cytoplasm. Nucleus Cytoplasm, Stress granule. Note=Localized to cytoplasmic stress granules after oxidative stress

RBPMS2 Antibody (Center) - Protocols

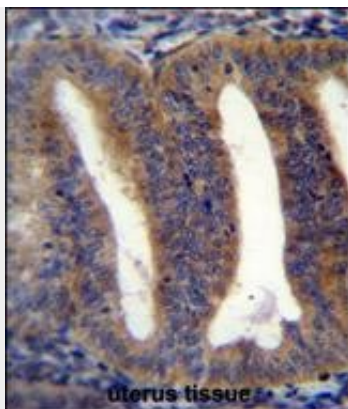
Provided below are standard protocols that you may find useful for product applications.

- [Western Blot](#)
- [Blocking Peptides](#)
- [Dot Blot](#)
- [Immunohistochemistry](#)
- [Immunofluorescence](#)
- [Immunoprecipitation](#)
- [Flow Cytometry](#)
- [Cell Culture](#)

RBPMS2 Antibody (Center) - Images



RBPMS2 Antibody (Center) (Cat. #AP12121c) western blot analysis in mouse stomach tissue lysates (35ug/lane). This demonstrates the RBPMS2 antibody detected the RBPMS2 protein (arrow).



RBPMS2 Antibody (Center) (Cat. #AP12121c) immunohistochemistry analysis in formalin fixed and paraffin embedded human uterus tissue followed by peroxidase conjugation of the secondary antibody and DAB staining. This data demonstrates the use of RBPMS2 Antibody (Center) for immunohistochemistry. Clinical relevance has not been evaluated.

RBPMS2 Antibody (Center) - Background

RBPMS2 contains one RRM (RNA recognition motif) domain. The exact function of RBPMS2 remains unknown.

RBPMS2 Antibody (Center) - References

Strausberg, R.L., et al. Proc. Natl. Acad. Sci. U.S.A. 99(26):16899-16903(2002)