

CT45A4/CT45A3/CT45A2/CT45A1/CT45A6 Antibody (Center)
Affinity Purified Rabbit Polyclonal Antibody (Pab)
Catalog # AP12131c**Specification**

CT45A4/CT45A3/CT45A2/CT45A1/CT45A6 Antibody (Center) - Product Information

Application	WB,E
Primary Accession	Q8N7B7
Other Accession	Q8NHU0 , Q5HYN5 , Q5DJT8 , NP_001017438.1 , NP_001017436.1
Reactivity	Human
Host	Rabbit
Clonality	Polyclonal
Isotype	Rabbit IgG
Antigen Region	106-135

CT45A4/CT45A3/CT45A2/CT45A1/CT45A6 Antibody (Center) - Additional Information**Other Names**

Cancer/testis antigen family 45 member A4/A6, Cancer/testis antigen 45-4/6, Cancer/testis antigen 45A4/45A6, CT45A4, CT45-4

Target/Specificity

This CT45A4/CT45A3/CT45A2/CT45A1/CT45A6 antibody is generated from rabbits immunized with a KLH conjugated synthetic peptide between 106-135 amino acids from the Central region of human CT45A4/CT45A3/CT45A2/CT45A1/CT45A6.

Dilution

WB~~1:1000

E~~Use at an assay dependent concentration.

Format

Purified polyclonal antibody supplied in PBS with 0.09% (W/V) sodium azide. This antibody is purified through a protein A column, followed by peptide affinity purification.

Storage

Maintain refrigerated at 2-8°C for up to 2 weeks. For long term storage store at -20°C in small aliquots to prevent freeze-thaw cycles.

Precautions

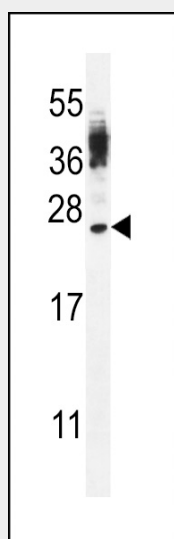
CT45A4/CT45A3/CT45A2/CT45A1/CT45A6 Antibody (Center) is for research use only and not for use in diagnostic or therapeutic procedures.

CT45A4/CT45A3/CT45A2/CT45A1/CT45A6 Antibody (Center) - Protein Information**CT45A4/CT45A3/CT45A2/CT45A1/CT45A6 Antibody (Center) - Protocols**

Provided below are standard protocols that you may find useful for product applications.

- [Western Blot](#)
- [Blocking Peptides](#)
- [Dot Blot](#)
- [Immunohistochemistry](#)
- [Immunofluorescence](#)
- [Immunoprecipitation](#)
- [Flow Cytometry](#)
- [Cell Culture](#)

CT45A4/CT45A3/CT45A2/CT45A1/CT45A6 Antibody (Center) - Images



CT45A Antibody (Center) (Cat. #AP12131c) western blot analysis in WiDr cell line lysates (35ug/lane). This demonstrates the CT45A antibody detected the CT45A protein (arrow).

CT45A4/CT45A3/CT45A2/CT45A1/CT45A6 Antibody (Center) - References

Chen, Y.T., et al. Proc. Natl. Acad. Sci. U.S.A. 102(22):7940-7945(2005)