

MBD3L3 Antibody (C-term)
Affinity Purified Rabbit Polyclonal Antibody (Pab)
Catalog # AP12132b**Specification**

MBD3L3 Antibody (C-term) - Product Information

Application	IF, WB, IHC-P, FC,E
Primary Accession	A6NE82
Other Accession	A6NJ08 , A6NDZ8 , Q8NHZ7 , NP_001157897.1
Reactivity	Human
Host	Rabbit
Clonality	Polyclonal
Isotype	Rabbit IgG
Calculated MW	23095
Antigen Region	156-184

MBD3L3 Antibody (C-term) - Additional Information**Gene ID** 653657**Other Names**

Putative methyl-CpG-binding domain protein 3-like 3, MBD3-like protein 3, MBD3L3

Target/Specificity

This MBD3L3 antibody is generated from rabbits immunized with a KLH conjugated synthetic peptide between 156-184 amino acids from the C-terminal region of human MBD3L3.

Dilution

IF~~1:10~50
WB~~1:1000
IHC-P~~1:10~50
FC~~1:10~50

Format

Purified polyclonal antibody supplied in PBS with 0.09% (W/V) sodium azide. This antibody is purified through a protein A column, followed by peptide affinity purification.

Storage

Maintain refrigerated at 2-8°C for up to 2 weeks. For long term storage store at -20°C in small aliquots to prevent freeze-thaw cycles.

Precautions

MBD3L3 Antibody (C-term) is for research use only and not for use in diagnostic or therapeutic procedures.

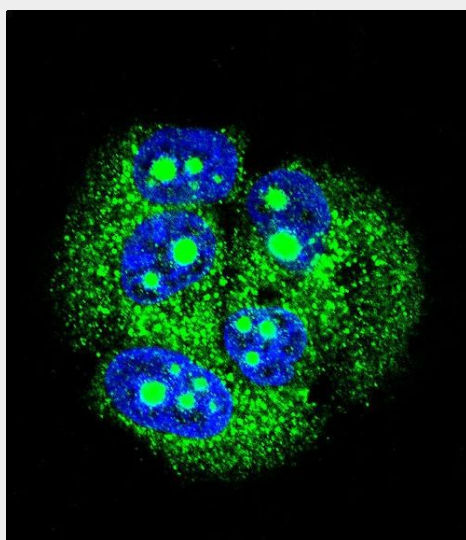
MBD3L3 Antibody (C-term) - Protein Information**Name** MBD3L3

MBD3L3 Antibody (C-term) - Protocols

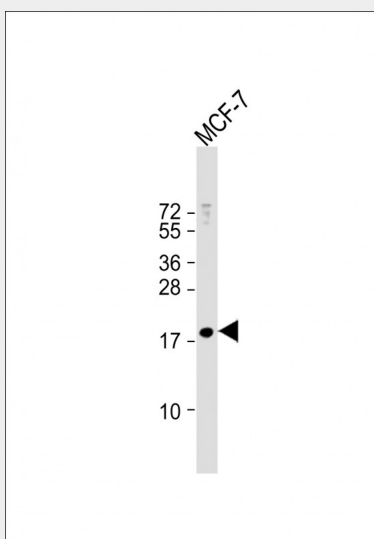
Provided below are standard protocols that you may find useful for product applications.

- [Western Blot](#)
- [Blocking Peptides](#)
- [Dot Blot](#)
- [Immunohistochemistry](#)
- [Immunofluorescence](#)
- [Immunoprecipitation](#)
- [Flow Cytometry](#)
- [Cell Culture](#)

MBD3L3 Antibody (C-term) - Images

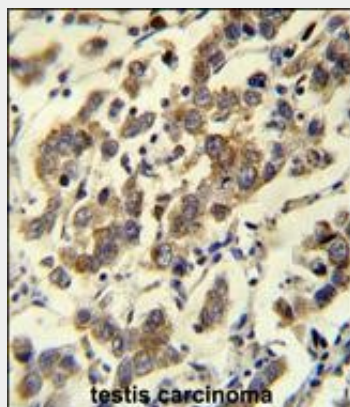


Confocal immunofluorescent analysis of MBD3L3 Antibody (C-term)(Cat#AP12132b) with MCF-7 cell followed by Alexa Fluor 488-conjugated goat anti-rabbit IgG (green).DAPI was used to stain the cell nuclear (blue).

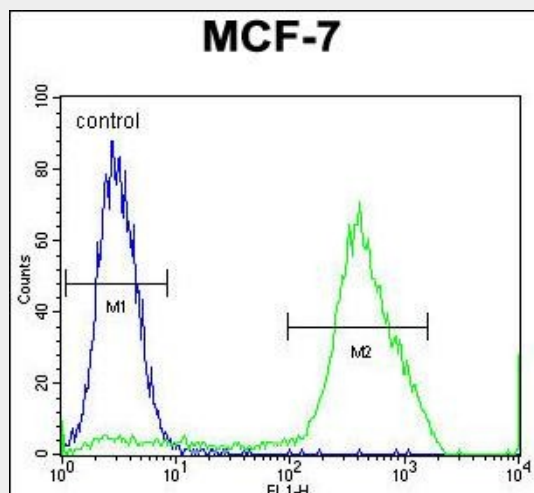


Anti-MBD3L3 Antibody (C-term) at 1:1000 dilution + MCF-7 whole cell lysate Lysates/proteins at

20 µg per lane. Secondary Goat Anti-Rabbit IgG, (H+L), Peroxidase conjugated at 1/10000 dilution. Predicted band size : 23 kDa Blocking/Dilution buffer: 5% NFDM/TBST.



MBD3L3 Antibody (C-term) (Cat. #AP12132b) immunohistochemistry analysis in formalin fixed and paraffin embedded human testis carcinoma followed by peroxidase conjugation of the secondary antibody and DAB staining. This data demonstrates the use of MBD3L3 Antibody (C-term) for immunohistochemistry. Clinical relevance has not been evaluated.



MBD3L3 Antibody (C-term) (Cat. #AP12132b) flow cytometric analysis of MCF-7 cells (right histogram) compared to a negative control cell (left histogram). FITC-conjugated goat-anti-rabbit secondary antibodies were used for the analysis.

MBD3L3 Antibody (C-term) - References

Grimwood, J., et al. Nature 428(6982):529-535(2004)