

OR2T8 Antibody (C-term)
Affinity Purified Rabbit Polyclonal Antibody (Pab)
Catalog # AP12137b**Specification**

OR2T8 Antibody (C-term) - Product Information

Application	WB,E
Primary Accession	A6NH00
Other Accession	Q8NG76 , Q8NG77 , NP_001005522.1
Reactivity	Human
Host	Rabbit
Clonality	Polyclonal
Isotype	Rabbit IgG
Calculated MW	34659
Antigen Region	241-269

OR2T8 Antibody (C-term) - Additional Information**Gene ID** 343172**Other Names**

Olfactory receptor 2T8, OR2T8, OR2T8P

Target/Specificity

This OR2T8 antibody is generated from rabbits immunized with a KLH conjugated synthetic peptide between 241-269 amino acids from the C-terminal region of human OR2T8.

Dilution

WB~~1:1000

E~~Use at an assay dependent concentration.

Format

Purified polyclonal antibody supplied in PBS with 0.09% (W/V) sodium azide. This antibody is purified through a protein A column, followed by peptide affinity purification.

Storage

Maintain refrigerated at 2-8°C for up to 2 weeks. For long term storage store at -20°C in small aliquots to prevent freeze-thaw cycles.

Precautions

OR2T8 Antibody (C-term) is for research use only and not for use in diagnostic or therapeutic procedures.

OR2T8 Antibody (C-term) - Protein Information**Name** OR2T8**Synonyms** OR2T8P

Function Odorant receptor.

Cellular Location

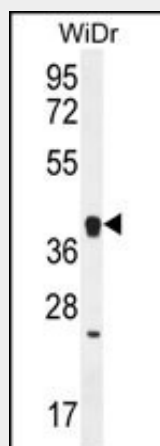
Cell membrane; Multi-pass membrane protein.

OR2T8 Antibody (C-term) - Protocols

Provided below are standard protocols that you may find useful for product applications.

- [Western Blot](#)
- [Blocking Peptides](#)
- [Dot Blot](#)
- [Immunohistochemistry](#)
- [Immunofluorescence](#)
- [Immunoprecipitation](#)
- [Flow Cytometry](#)
- [Cell Culture](#)

OR2T8 Antibody (C-term) - Images



OR2T8 Antibody (C-term) (Cat. #AP12137b) western blot analysis in WiDr cell line lysates (35ug/lane). This demonstrates the OR2T8 antibody detected the OR2T8 protein (arrow).

OR2T8 Antibody (C-term) - Background

Olfactory receptors interact with odorant molecules in the nose, to initiate a neuronal response that triggers the perception of a smell. The olfactory receptor proteins are members of a large family of G-protein-coupled receptors (GPCR) arising from single coding-exon genes. Olfactory receptors share a 7-transmembrane domain structure with many neurotransmitter and hormone receptors and are responsible for the recognition and G protein-mediated transduction of odorant signals. The olfactory receptor gene family is the largest in the genome. The nomenclature assigned to the olfactory receptor genes and proteins for this organism is independent of other organisms.

OR2T8 Antibody (C-term) - References

Fuchs, T., et al. Genomics 80(3):295-302(2002)