

KBTBD13 Antibody (C-term)
Affinity Purified Rabbit Polyclonal Antibody (Pab)
Catalog # AP12139b**Specification**

KBTBD13 Antibody (C-term) - Product Information

| | |
|-------------------|---------------------------------------------------------|
| Application | WB, IHC-P,E |
| Primary Accession | C9JR72 |
| Other Accession | Q8C828 , NP_001094832.1 |
| Reactivity | Human |
| Predicted | Mouse |
| Host | Rabbit |
| Clonality | Polyclonal |
| Isotype | Rabbit IgG |
| Antigen Region | 409-438 |

KBTBD13 Antibody (C-term) - Additional Information**Gene ID** 390594**Other Names**

Kelch repeat and BTB domain-containing protein 13, KBTBD13

Target/Specificity

This KBTBD13 antibody is generated from rabbits immunized with a KLH conjugated synthetic peptide between 409-438 amino acids from the C-terminal region of human KBTBD13. .

Dilution

WB~~1:1000

IHC-P~~1:10~50

E~~Use at an assay dependent concentration.

Format

Purified polyclonal antibody supplied in PBS with 0.09% (W/V) sodium azide. This antibody is purified through a protein A column, followed by peptide affinity purification.

Storage

Maintain refrigerated at 2-8°C for up to 2 weeks. For long term storage store at -20°C in small aliquots to prevent freeze-thaw cycles.

Precautions

KBTBD13 Antibody (C-term) is for research use only and not for use in diagnostic or therapeutic procedures.

KBTBD13 Antibody (C-term) - Protein Information**Name** KBTBD13

Function Substrate-specific adapter of a BCR (BTB-CUL3-RBX1) E3 ubiquitin ligase complex.

Cellular Location

Cytoplasm

Tissue Location

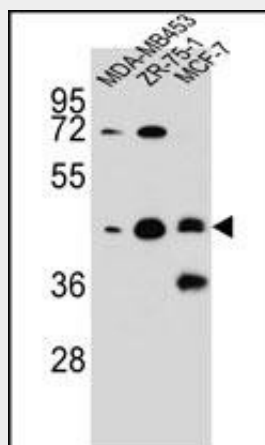
Expressed in skeletal muscle.

KBTBD13 Antibody (C-term) - Protocols

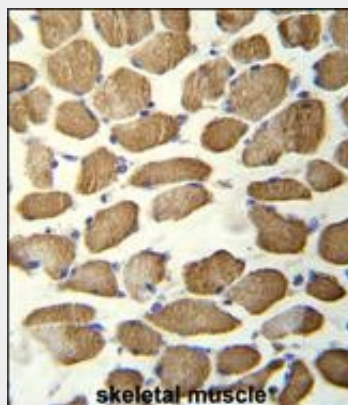
Provided below are standard protocols that you may find useful for product applications.

- [Western Blot](#)
- [Blocking Peptides](#)
- [Dot Blot](#)
- [Immunohistochemistry](#)
- [Immunofluorescence](#)
- [Immunoprecipitation](#)
- [Flow Cytometry](#)
- [Cell Culture](#)

KBTBD13 Antibody (C-term) - Images



KBTBD13 Antibody (C-term) (Cat. #AP12139b) western blot analysis in MDA-MB453,ZR-75-1,MCF-7 cell line lysates (35ug/lane).This demonstrates the KBTBD13 antibody detected the KBTBD13 protein (arrow).



KBTBD13 Antibody (C-term) (Cat. #AP12139b) immunohistochemistry analysis in formalin fixed and paraffin embedded human skeletal muscle followed by peroxidase conjugation of the secondary antibody and DAB staining. This data demonstrates the use of KBTBD13 Antibody (C-term) for immunohistochemistry. Clinical relevance has not been evaluated.

KBTBD13 Antibody (C-term) - Background

The gene belongs to a family of genes encoding proteins containing a BTB domain and several kelch repeats. The BTB domain functions as a protein-protein interaction module, which includes an ability to self-associate or to interact with non-BTB domain-containing proteins. The kelch motif typically occurs in groups of five to seven repeats, and has been found in proteins with diverse functions. Known functions of these family members include transcription regulation, ion channel tetramerization and gating, protein ubiquitination or degradation, and cytoskeleton regulation. The exact function of this family member has yet to be determined.

KBTBD13 Antibody (C-term) - References

Stogios, P.J., et al. Genome Biol. 6 (10), R82 (2005) :