

**JAG1 Antibody (C-term)**  
**Affinity Purified Rabbit Polyclonal Antibody (Pab)**  
**Catalog # AP12146b****Specification**

---

**JAG1 Antibody (C-term) - Product Information**

Application	FC, WB,E
Primary Accession	<a href="#">P78504</a>
Other Accession	<a href="#">Q63722</a> , <a href="#">Q9OXX0</a> , <a href="#">NP_000205.1</a>
Reactivity	Human
Predicted	Mouse, Rat
Host	Rabbit
Clonality	Polyclonal
Isotype	Rabbit IgG
Calculated MW	133799
Antigen Region	1122-1150

**JAG1 Antibody (C-term) - Additional Information****Gene ID** 182**Other Names**

Protein jagged-1, Jagged1, hJ1, CD339, JAG1, JAGL1

**Target/Specificity**

This JAG1 antibody is generated from rabbits immunized with a KLH conjugated synthetic peptide between 1122-1150 amino acids from the C-terminal region of human JAG1.

**Dilution**

FC~~1:10~50

WB~~1:1000

E~~Use at an assay dependent concentration.

**Format**

Purified polyclonal antibody supplied in PBS with 0.09% (W/V) sodium azide. This antibody is purified through a protein A column, followed by peptide affinity purification.

**Storage**

Maintain refrigerated at 2-8°C for up to 2 weeks. For long term storage store at -20°C in small aliquots to prevent freeze-thaw cycles.

**Precautions**

JAG1 Antibody (C-term) is for research use only and not for use in diagnostic or therapeutic procedures.

**JAG1 Antibody (C-term) - Protein Information****Name** JAG1

## Synonyms JAGL1

**Function** Ligand for multiple Notch receptors and involved in the mediation of Notch signaling (PubMed:[18660822](#), PubMed:[20437614](#)). May be involved in cell-fate decisions during hematopoiesis (PubMed:[9462510](#)). Seems to be involved in early and late stages of mammalian cardiovascular development. Inhibits myoblast differentiation (By similarity). Enhances fibroblast growth factor-induced angiogenesis (in vitro).

## Cellular Location

Membrane; Single-pass type I membrane protein. Cell membrane

## Tissue Location

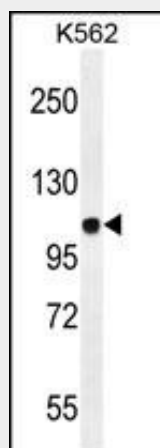
Widely expressed in adult and fetal tissues. In cervix epithelium expressed in undifferentiated subcolumnar reserve cells and squamous metaplasia. Expression is up-regulated in cervical squamous cell carcinoma. Expressed in bone marrow cell line HS-27a which supports the long-term maintenance of immature progenitor cells

## JAG1 Antibody (C-term) - Protocols

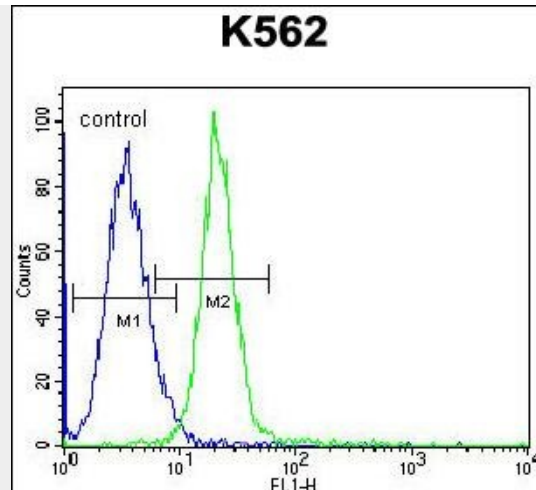
Provided below are standard protocols that you may find useful for product applications.

- [Western Blot](#)
- [Blocking Peptides](#)
- [Dot Blot](#)
- [Immunohistochemistry](#)
- [Immunofluorescence](#)
- [Immunoprecipitation](#)
- [Flow Cytometry](#)
- [Cell Culture](#)

## JAG1 Antibody (C-term) - Images



JAG1 Antibody (C-term) (Cat. #AP12146b) western blot analysis in K562 cell line lysates (35ug/lane). This demonstrates the JAG1 antibody detected the JAG1 protein (arrow).



JAG1 Antibody (C-term) (Cat. #AP12146b) flow cytometric analysis of K562 cells (right histogram) compared to a negative control cell (left histogram). FITC-conjugated goat-anti-rabbit secondary antibodies were used for the analysis.

#### **JAG1 Antibody (C-term) - Background**

The jagged 1 protein encoded by JAG1 is the human homolog of the *Drosophila* jagged protein. Human jagged 1 is the ligand for the receptor notch 1, the latter a human homolog of the *Drosophila* jagged receptor notch. Mutations that alter the jagged 1 protein cause Alagille syndrome. Jagged 1 signalling through notch 1 has also been shown to play a role in hematopoiesis.

#### **JAG1 Antibody (C-term) - References**

Foldi, J., et al. *J. Immunol.* 185(9):5023-5031(2010)  
Bailey, S.D., et al. *Diabetes Care* 33(10):2250-2253(2010)  
Kerns, D., et al. *Schizophr. Res.* 120 (1-3), 150-158 (2010) :  
Siar, C.H., et al. *Eur. J. Med. Res.* 15(4):180-184(2010)  
Jugessur, A., et al. *PLoS ONE* 5 (7), E11493 (2010) :