

**SPECC1 Antibody (Center)**  
**Affinity Purified Rabbit Polyclonal Antibody (Pab)**  
**Catalog # AP12147c****Specification**

---

**SPECC1 Antibody (Center) - Product Information**

Application	IF, WB, IHC-P, FC,E
Primary Accession	<a href="#">Q69YQ0</a>
Other Accession	<a href="#">Q2KN98</a> , <a href="#">Q2KN93</a> , <a href="#">Q2KN97</a> , <a href="#">NP_001138940.1</a>
Reactivity	Human, Mouse
Predicted	Chicken, Zebrafish
Host	Rabbit
Clonality	Polyclonal
Isotype	Rabbit IgG
Antigen Region	705-733

**SPECC1 Antibody (Center) - Additional Information****Gene ID** 23384**Other Names**

Cytospin-A, Renal carcinoma antigen NY-REN-22, Sperm antigen with calponin homology and coiled-coil domains 1-like, SPECC1-like protein, SPECC1L, CYTSA, KIAA0376

**Target/Specificity**

This SPECC1 antibody is generated from rabbits immunized with a KLH conjugated synthetic peptide between 705-733 amino acids from the Central region of human SPECC1.

**Dilution**

IF~~1:10~50  
WB~~1:1000  
IHC-P~~1:10~50  
FC~~1:10~50

**Format**

Purified polyclonal antibody supplied in PBS with 0.09% (W/V) sodium azide. This antibody is purified through a protein A column, followed by peptide affinity purification.

**Storage**

Maintain refrigerated at 2-8°C for up to 2 weeks. For long term storage store at -20°C in small aliquots to prevent freeze-thaw cycles.

**Precautions**

SPECC1 Antibody (Center) is for research use only and not for use in diagnostic or therapeutic procedures.

**SPECC1 Antibody (Center) - Protein Information**

**Name** SPECC1L

**Synonyms** CYTSA, KIAA0376

**Function** Involved in cytokinesis and spindle organization. May play a role in actin cytoskeleton organization and microtubule stabilization and hence required for proper cell adhesion and migration.

**Cellular Location**

Cytoplasm, cytoskeleton. Cytoplasm, cytoskeleton, spindle. Cell junction, gap junction.

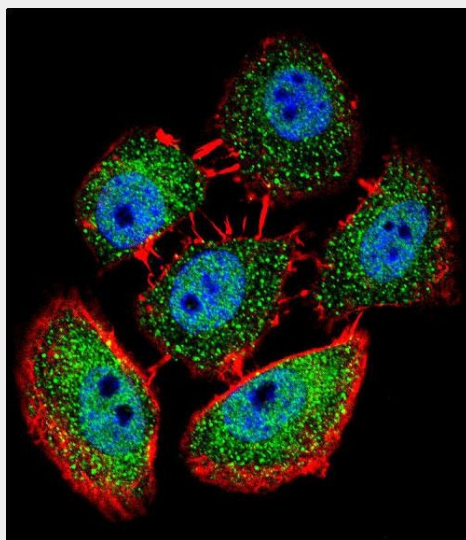
Note=Colocalizes with acetylated alpha- tubulin, gamma-tubulin and F-actin. Also observed in a ring around gamma-tubulin containing centrioles possibly in the microtubule organizing center

**SPECC1 Antibody (Center) - Protocols**

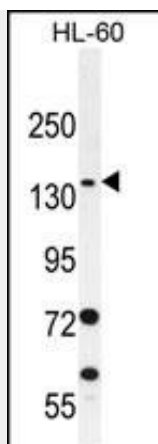
Provided below are standard protocols that you may find useful for product applications.

- [Western Blot](#)
- [Blocking Peptides](#)
- [Dot Blot](#)
- [Immunohistochemistry](#)
- [Immunofluorescence](#)
- [Immunoprecipitation](#)
- [Flow Cytometry](#)
- [Cell Culture](#)

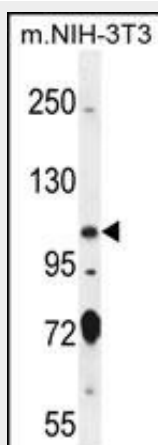
**SPECC1 Antibody (Center) - Images**



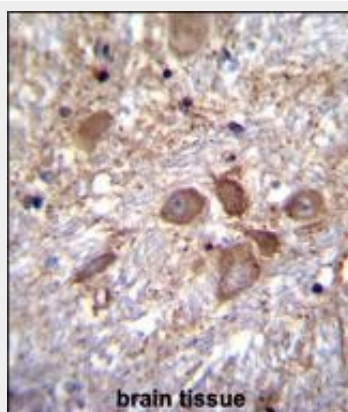
Confocal immunofluorescent analysis of SPECC1 Antibody (Center)(Cat#AP12147c) with U-251MG cell followed by Alexa Fluor 488-conjugated goat anti-rabbit IgG (green). Actin filaments have been labeled with Alexa Fluor 555 phalloidin (red). DAPI was used to stain the cell nuclear (blue).



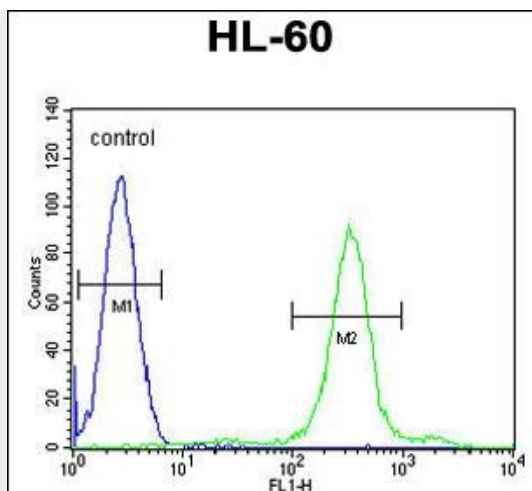
SPECC1 Antibody (Center) (Cat. #AP12147c) western blot analysis in HL-60 cell line lysates (35ug/lane). This demonstrates the SPECC1 antibody detected the SPECC1 protein (arrow).



SPECC1 Antibody (Center) (Cat. #AP12147c) western blot analysis in mouse NIH-3T3 cell line lysates (35ug/lane). This demonstrates the SPECC1 antibody detected the SPECC1 protein (arrow).



SPECC1 Antibody (Center) (Cat. #AP12147c) immunohistochemistry analysis in formalin fixed and paraffin embedded human brain tissue followed by peroxidase conjugation of the secondary antibody and DAB staining. This data demonstrates the use of SPECC1 Antibody (Center) for immunohistochemistry. Clinical relevance has not been evaluated.



SPECC1 Antibody (Center) (Cat. #AP12147c) flow cytometric analysis of HL-60 cells (right histogram) compared to a negative control cell (left histogram). FITC-conjugated goat-anti-rabbit secondary antibodies were used for the analysis.

#### **SPECC1 Antibody (Center) - Background**

CYTSA is involved in cytokinesis and spindle organization.

#### **SPECC1 Antibody (Center) - References**

Scanlan, M.J., et al. Int. J. Cancer 83(4):456-464(1999)