

**COL21A1 Antibody (N-term)**  
**Affinity Purified Rabbit Polyclonal Antibody (Pab)**  
**Catalog # AP12150a****Specification**

---

**COL21A1 Antibody (N-term) - Product Information**

Application	WB, IF, IHC-P,E
Primary Accession	<a href="#">O96P44</a>
Other Accession	<a href="#">NP_110447.2</a>
Reactivity	Human
Host	Rabbit
Clonality	Polyclonal
Isotype	Rabbit IgG
Calculated MW	99369
Antigen Region	204-232

**COL21A1 Antibody (N-term) - Additional Information****Gene ID** 81578**Other Names**

Collagen alpha-1(XI) chain, COL21A1, COL1AL

**Target/Specificity**

This COL21A1 antibody is generated from rabbits immunized with a KLH conjugated synthetic peptide between 204-232 amino acids from the N-terminal region of human COL21A1.

**Dilution**

WB~~1:1000

IF~~1:10~50

IHC-P~~1:10~50

E~~Use at an assay dependent concentration.

**Format**

Purified polyclonal antibody supplied in PBS with 0.09% (W/V) sodium azide. This antibody is purified through a protein A column, followed by peptide affinity purification.

**Storage**

Maintain refrigerated at 2-8°C for up to 2 weeks. For long term storage store at -20°C in small aliquots to prevent freeze-thaw cycles.

**Precautions**

COL21A1 Antibody (N-term) is for research use only and not for use in diagnostic or therapeutic procedures.

**COL21A1 Antibody (N-term) - Protein Information****Name** COL21A1

**Synonyms COL1A1****Cellular Location**

Secreted, extracellular space, extracellular matrix. Cytoplasm. Note=Found in the extracellular matrix component of blood vessel walls and in the cytoplasm of cultured human aortic smooth muscle

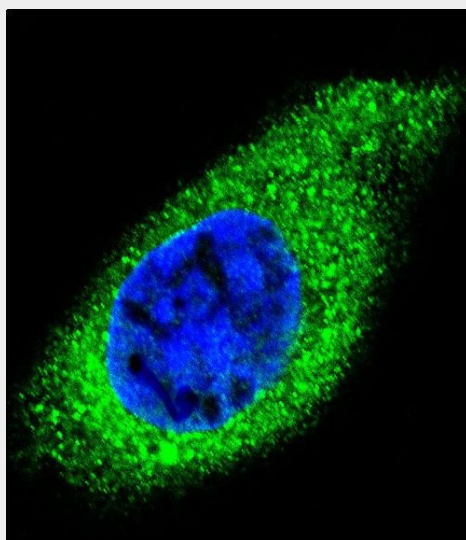
**Tissue Location**

Highly expressed in lymph node, jejunum, pancreas, stomach, trachea, testis, uterus and placenta; moderately expressed in brain, colon, lung, prostate, spinal cord, salivary gland and vascular smooth-muscle cells and very weakly expressed in heart, liver, kidney, bone marrow, spleen, thymus, skeletal muscle, adrenal gland and peripheral leukocytes. Expression in heart was higher in the right ventricle and atrium than in the left ventricle and atrium

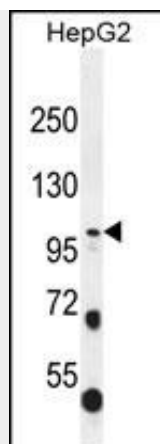
**COL21A1 Antibody (N-term) - Protocols**

Provided below are standard protocols that you may find useful for product applications.

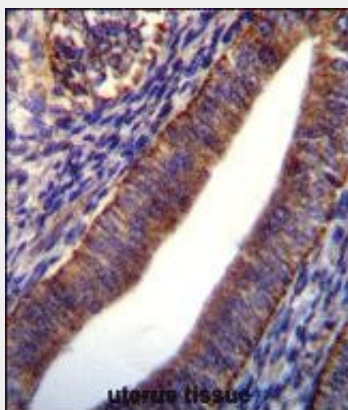
- [Western Blot](#)
- [Blocking Peptides](#)
- [Dot Blot](#)
- [Immunohistochemistry](#)
- [Immunofluorescence](#)
- [Immunoprecipitation](#)
- [Flow Cytometry](#)
- [Cell Culture](#)

**COL21A1 Antibody (N-term) - Images**

Confocal immunofluorescent analysis of COL21A1 Antibody (N-term)(Cat#AP12150a) with HepG2 cell followed by Alexa Fluor 488-conjugated goat anti-rabbit IgG (green). DAPI was used to stain the cell nuclear (blue).



COL21A1 Antibody (N-term) (Cat. #AP12150a) western blot analysis in HepG2 cell line lysates (35ug/lane). This demonstrates the COL21A1 antibody detected the COL21A1 protein (arrow).



COL21A1 Antibody (N-term) (Cat. #AP12150a) immunohistochemistry analysis in formalin fixed and paraffin embedded human uterus tissue followed by peroxidase conjugation of the secondary antibody and DAB staining. This data demonstrates the use of COL21A1 Antibody (N-term) for immunohistochemistry. Clinical relevance has not been evaluated.

### **COL21A1 Antibody (N-term) - Background**

This gene encodes the alpha chain of type XXI collagen, a member of the FACIT collagen family (fibril-associated collagens with interrupted helices). Type XXI collagen is localized to tissues containing type I collagen so, like other members of this collagen family, it may serve to maintain the integrity of the extracellular matrix. An alternatively spliced transcript variant has been described, but its full-length nature has yet to be determined.

### **COL21A1 Antibody (N-term) - References**

Rose, J.E., et al. Mol. Med. 16 (7-8), 247-253 (2010) :  
Chou, M.Y., et al. Genomics 79(3):395-401(2002)  
Tuckwell, D. Matrix Biol. 21(1):63-66(2002)  
Fitzgerald, J., et al. FEBS Lett. 505(2):275-280(2001)