

**NKD2 Antibody (C-term)**  
**Affinity Purified Rabbit Polyclonal Antibody (Pab)**  
**Catalog # AP12158B****Specification**

---

**NKD2 Antibody (C-term) - Product Information**

Application	FC, IF, IHC-P, WB,E
Primary Accession	<a href="#">O969F2</a>
Other Accession	<a href="#">NP_149111.1</a>
Reactivity	Human
Host	Rabbit
Clonality	Polyclonal
Isotype	Rabbit IgG
Calculated MW	50055
Antigen Region	366-393

**NKD2 Antibody (C-term) - Additional Information****Gene ID** 85409**Other Names**

Protein naked cuticle homolog 2, Naked-2, hNkd2, NKD2

**Target/Specificity**

This NKD2 antibody is generated from rabbits immunized with a KLH conjugated synthetic peptide between 366-393 amino acids from the C-terminal region of human NKD2.

**Dilution**

FC~~1:10~50

IF~~1:10~50

IHC-P~~1:10~50

WB~~1:1000

E~~Use at an assay dependent concentration.

**Format**

Purified polyclonal antibody supplied in PBS with 0.09% (W/V) sodium azide. This antibody is purified through a protein A column, followed by peptide affinity purification.

**Storage**

Maintain refrigerated at 2-8°C for up to 2 weeks. For long term storage store at -20°C in small aliquots to prevent freeze-thaw cycles.

**Precautions**

NKD2 Antibody (C-term) is for research use only and not for use in diagnostic or therapeutic procedures.

**NKD2 Antibody (C-term) - Protein Information**

**Name** NKD2

**Function** Cell autonomous antagonist of the canonical Wnt signaling pathway. May activate a second Wnt signaling pathway that controls planar cell polarity (By similarity). Required for processing of TGFA and for targeting of TGFA to the basolateral membrane of polarized epithelial cells.

**Cellular Location**

Cell membrane. Cytoplasm. Cytoplasmic vesicle

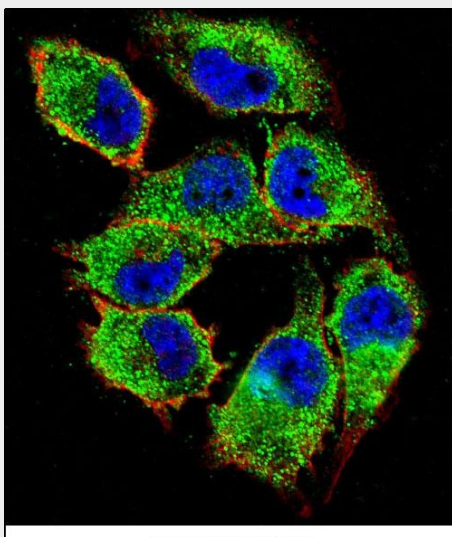
**Tissue Location**

Expressed in kidney, lung, pancreas and spleen.

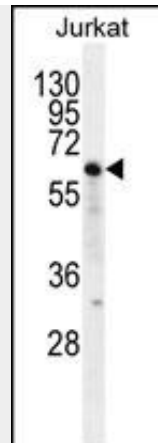
**NKD2 Antibody (C-term) - Protocols**

Provided below are standard protocols that you may find useful for product applications.

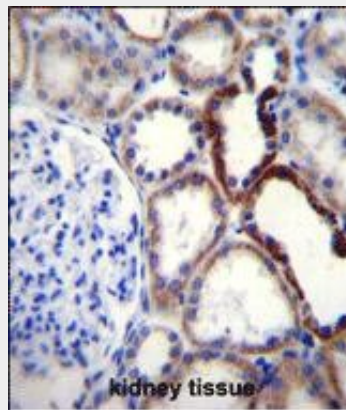
- [Western Blot](#)
- [Blocking Peptides](#)
- [Dot Blot](#)
- [Immunohistochemistry](#)
- [Immunofluorescence](#)
- [Immunoprecipitation](#)
- [Flow Cytometry](#)
- [Cell Culture](#)

**NKD2 Antibody (C-term) - Images**

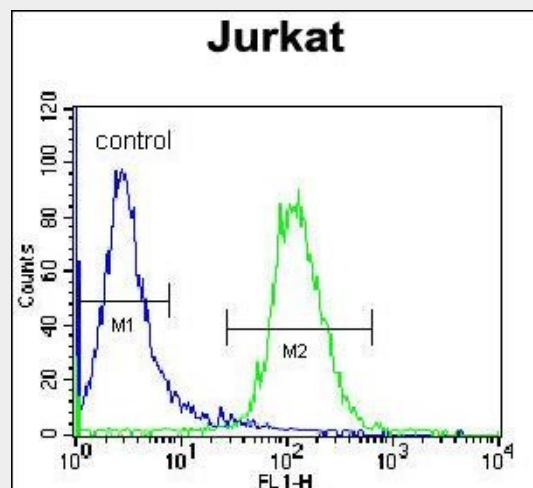
Confocal immunofluorescent analysis of NKD2 Antibody (C-term)(Cat#AP12158b) with A375 cell followed by Alexa Fluor 488-conjugated goat anti-rabbit IgG (green). Actin filaments have been labeled with Alexa Fluor 555 phalloidin (red).DAPI was used to stain the cell nuclear (blue).



NKD2 Antibody (C-term) (Cat. #AP12158b) western blot analysis in Jurkat cell line lysates (35ug/lane). This demonstrates the NKD2 antibody detected the NKD2 protein (arrow).



NKD2 Antibody (C-term) (Cat. #AP12158b) immunohistochemistry analysis in formalin fixed and paraffin embedded human kidney tissue followed by peroxidase conjugation of the secondary antibody and DAB staining. This data demonstrates the use of NKD2 Antibody (C-term) for immunohistochemistry. Clinical relevance has not been evaluated.



NKD2 Antibody (C-term) (Cat. #AP12158b) flow cytometric analysis of Jurkat cells (right histogram) compared to a negative control cell (left histogram). FITC-conjugated donkey-anti-rabbit secondary antibodies were used for the analysis.

#### NKD2 Antibody (C-term) - Background

In the mouse, Nkd is a Dishevelled (see DVL1; MIM 601365)-binding protein that functions as a negative regulator of the Wnt (see WNT1; MIM 164820)-beta-catenin (see MIM 116806)-Tcf (see MIM 602272) signaling pathway.

#### **NKD2 Antibody (C-term) - References**

Hu, T., et al. J. Biol. Chem. 285(18):13561-13568(2010)  
Ding, W., et al. Proc. Natl. Acad. Sci. U.S.A. 105(36):13433-13438(2008)  
Li, C., et al. Mol. Biol. Cell 18(8):3081-3093(2007)  
Adamowicz, M., et al. Genes Chromosomes Cancer 45(9):829-838(2006)  
Li, C., et al. Proc. Natl. Acad. Sci. U.S.A. 101(15):5571-5576(2004)